

126-57

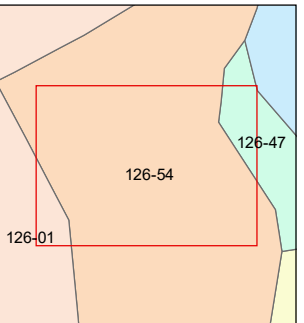
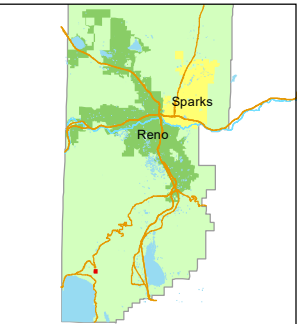
1001 East Ninth Street, Building D
Reno, Nevada 89512
(775) 328-2231



Feet

10 20 30 40

1 inch = 60 feet



created by: CFB 05/24/2010

updated: KSB 09/27/10 SR 06/05/19

area previously shown on map(s):

NOTE: This map was prepared for the use of the Washoe County Assessor for assessment and illustrative purposes only. It does not represent a survey of the premises. No liability is assumed as to the sufficiency or accuracy of the data delineated hereon.

(# 1155)
TYROLIAN VILLAGE
UNIT NO. 4

PORTION OF THE N 1/2
SECTION 14, T16N - R18E

A TOWNHOUSE
UNITS ONLY
SEE 126-54 FOR COMMON AREA

PARCEL "V"

DRIVE

PARCEL "W"

DEDICATION OF ALL STREETS TO THE COUNTY OF WASHOE IS REJECTED,
BUT THE OFFER OF DEDICATION WILL REMAIN OPEN UNDER N.R.S. 278.390

126-56