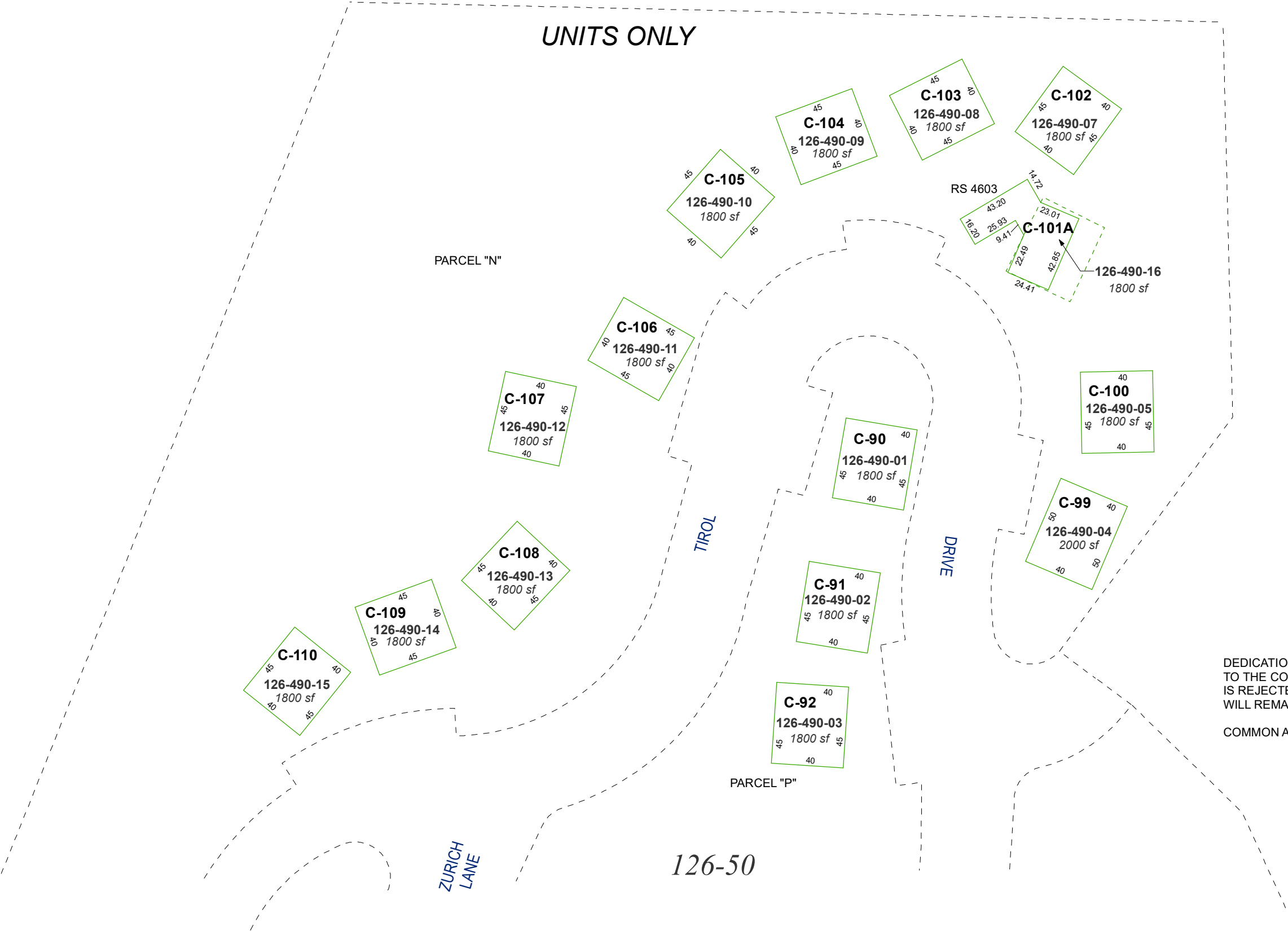


(#1126)  
TYROLIAN VILLAGE UNIT NO. 3  
A TOWNHOUSE  
PORTION OF SE 1/4  
SECTION 11  
T16N - R18E

UNITS ONLY



DEDICATION OF ALL STREETS  
TO THE COUNTY OF WASHOE  
IS REJECTED, BUT OFFER  
WILL REMAIN OPEN

COMMON AREA SHOWN ON PAGE 126-48

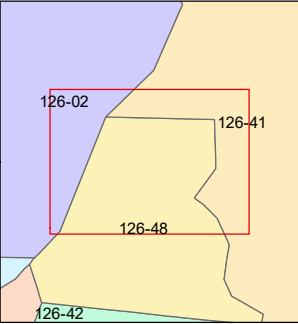
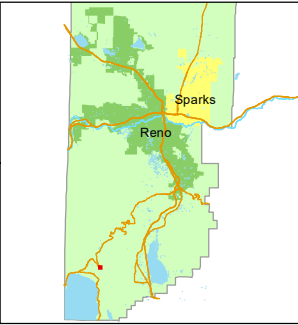
Assessor's Map Number  
**126-49**

STATE OF NEVADA  
**WASHOE COUNTY**  
**ASSESSOR'S OFFICE**  
1001 East Ninth Street, Building D  
Reno, Nevada 89512  
(775) 328-2231



Feet  
0 20 40 60

1 inch = 60 feet



created by: KGC 11/6/2024

updated: \_\_\_\_\_

area previously shown on map(s):  
124-41

NOTE: This map was prepared for the use of the Washoe County Assessor for assessment and illustrative purposes only. It does not represent a survey of the premises. No liability is assumed as to the sufficiency or accuracy of the data delineated hereon.