

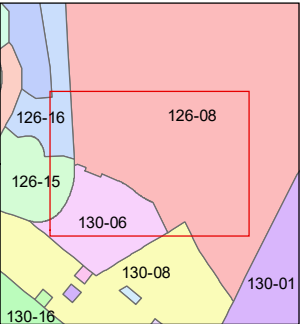
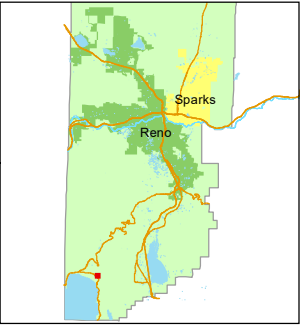
STATE OF NEVADA
WASHOE COUNTY
ASSESSOR'S OFFICE

1001 East Ninth Street, Building D
Reno, Nevada 89512
(775) 328-2231



Feet
0 20 40 60 80

1 inch = 80 feet

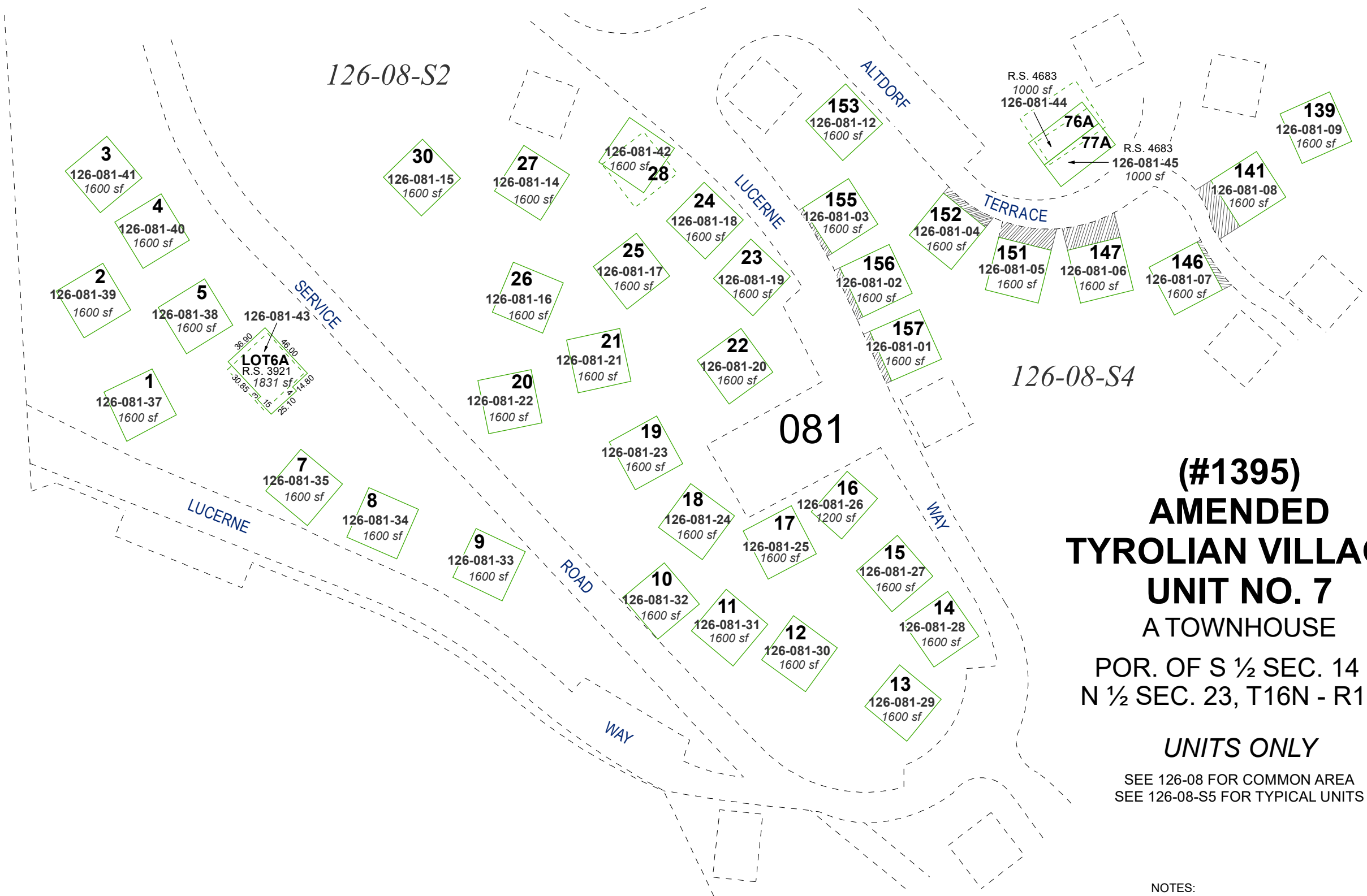


created by: CFB 06/11/2013

updated: KGC 10/23/24

area previously shown on map(s):

NOTE: This map was prepared for the use of the Washoe County Assessor for assessment and illustrative purposes only. It does not represent a survey of the premises. No liability is assumed as to the sufficiency or accuracy of the data delineated hereon.



**(#1395)
AMENDED
TYROLIAN VILLAGE
UNIT NO. 7
A TOWNHOUSE**

POR. OF S ½ SEC. 14 &
N ½ SEC. 23, T16N - R18E

UNITS ONLY

SEE 126-08 FOR COMMON AREA
SEE 126-08-S5 FOR TYPICAL UNITS

NOTES:

126-081-26 is restricted to permanent
Open Space per Document No. 1425043.
Residential development allocation has been
transferred to 122-181-17.

Cross-hatched areas are for garages, carports,
parking decks and driveways.