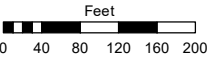
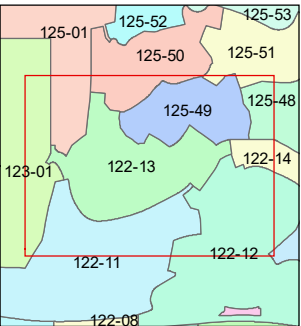
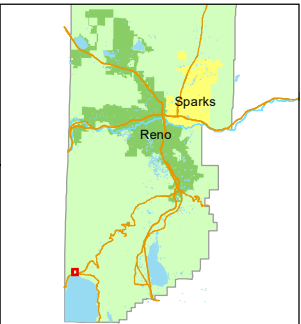


STATE OF NEVADA  
**WASHOE COUNTY**  
**ASSESSOR'S OFFICE**  
1001 East Ninth Street, Building D  
Reno, Nevada 89512  
(775) 328-2231



1 inch = 200 feet



created by: SR 10/11/2017

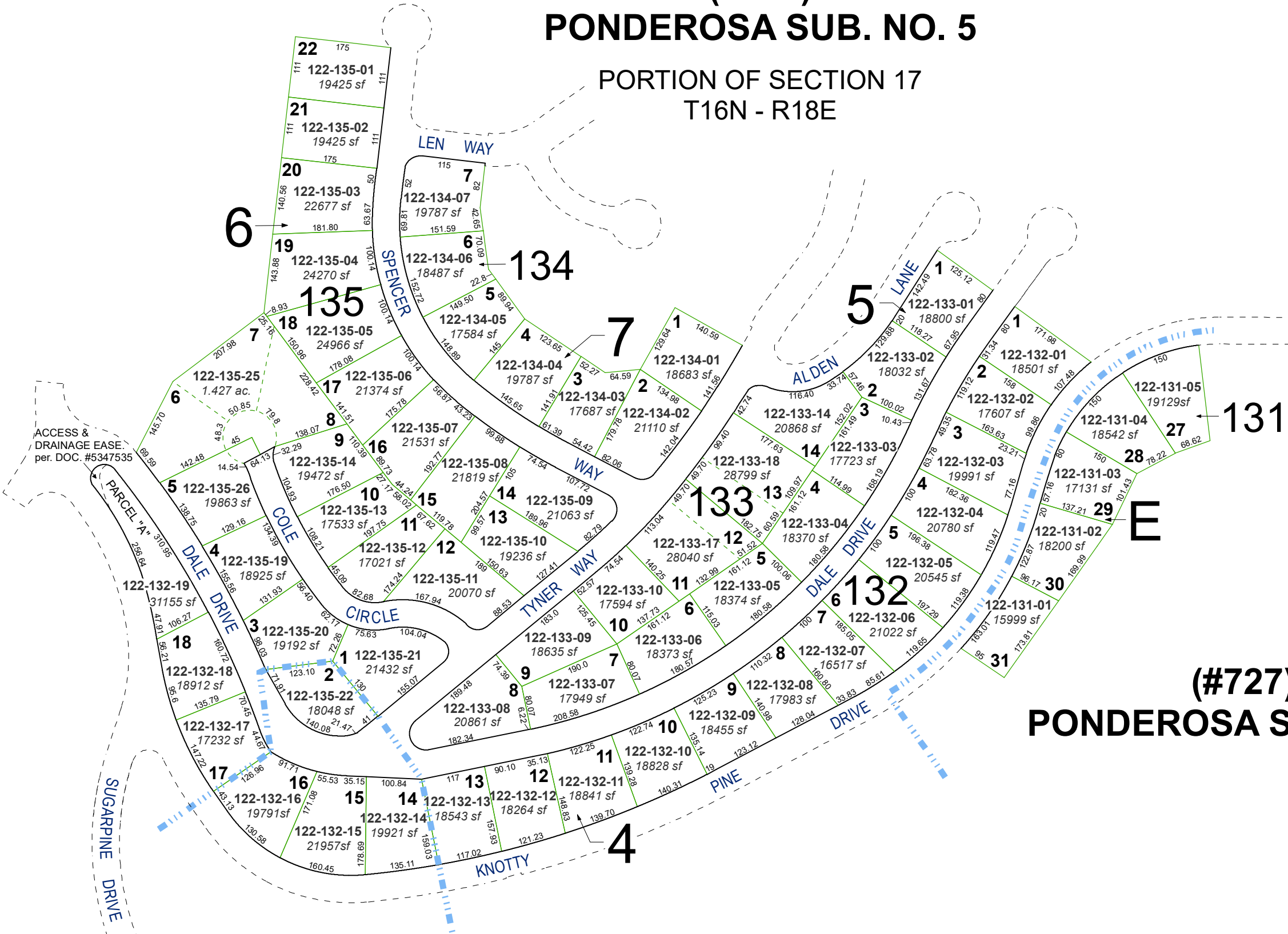
updated: JKF 3/17/23

area previously shown on map(s):

NOTE: This map was prepared for the use of the Washoe County Assessor for assessment and illustrative purposes only. It does not represent a survey of the premises. No liability is assumed as to the sufficiency or accuracy of the data delineated hereon.

(#794)  
**PONDEROSA SUB. NO. 5**

PORTION OF SECTION 17  
T16N - R18E



(#1024)  
**PONDEROSA SUB. NO. 5**  
AMENDED PLAT FOR LOTS  
14-16 BLK. 4 & LOT 2 BLK. 6

(#727)  
**PONDEROSA SUB. NO. 4**