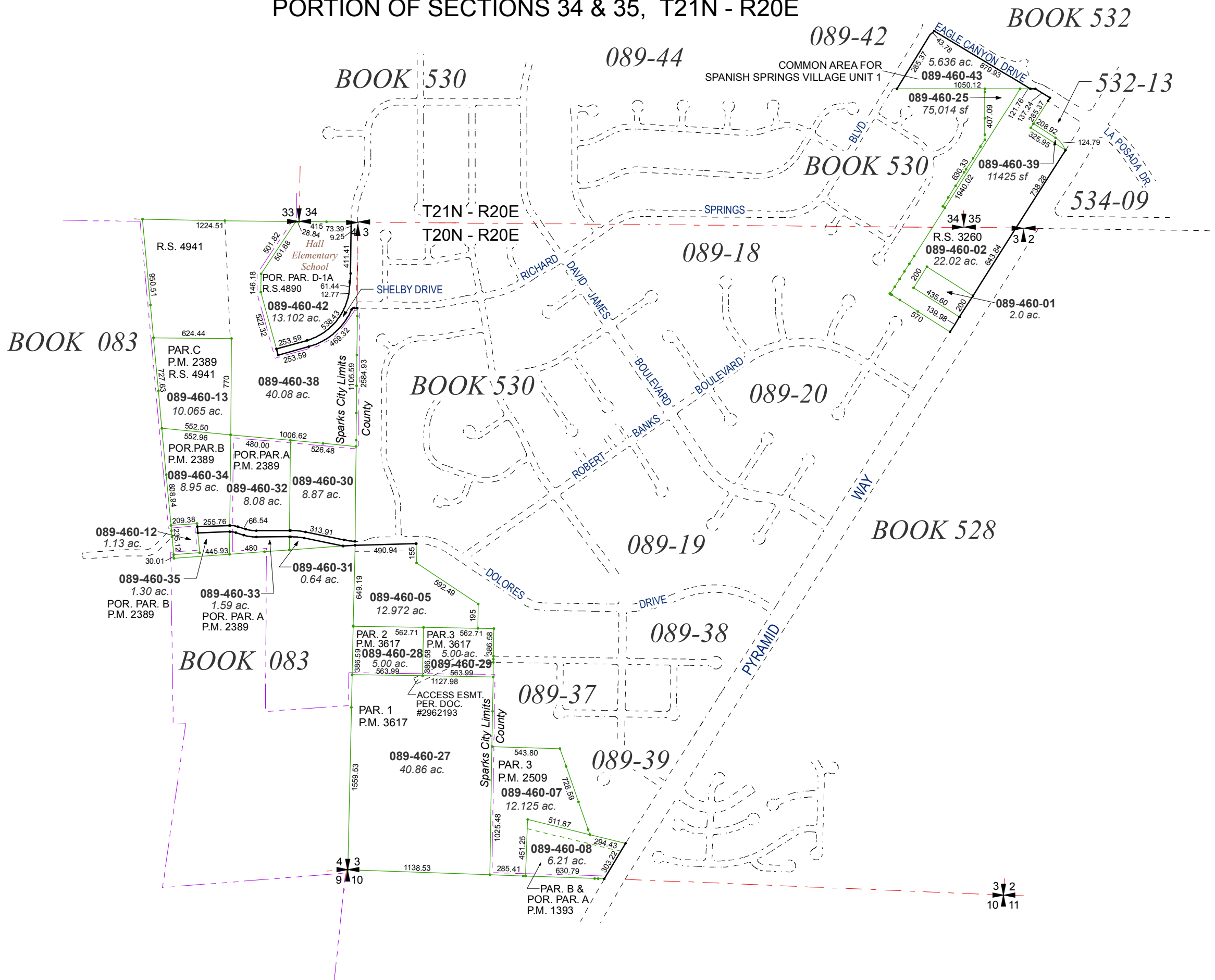


PORTION OF SECTIONS 3 & 4, T20N - R20E
PORTION OF SECTIONS 34 & 35, T21N - R20E



Assessor's Map Number

089-46

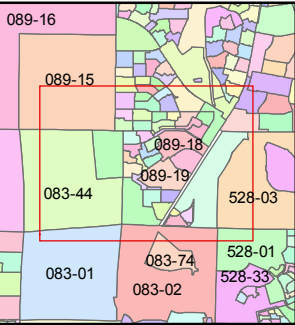
STATE OF NEVADA
WASHOE COUNTY
ASSESSOR'S OFFICE
Joshua G. Wilson, Assessor

1001 East Ninth Street
Building D
Reno, Nevada 89512
(775) 328-2231



Feet
0 200 400 600 800

1 inch = 800 feet



created by: TWT 11/9/2009

last updated: CFB 11/13/2014

area previously shown on map(s)

089-15

NOTE: This map was prepared for the use of the Washoe County Assessor for assessment and illustrative purposes only. It does not represent a survey of the premises. No liability is assumed as to the sufficiency or accuracy of the data delineated hereon.