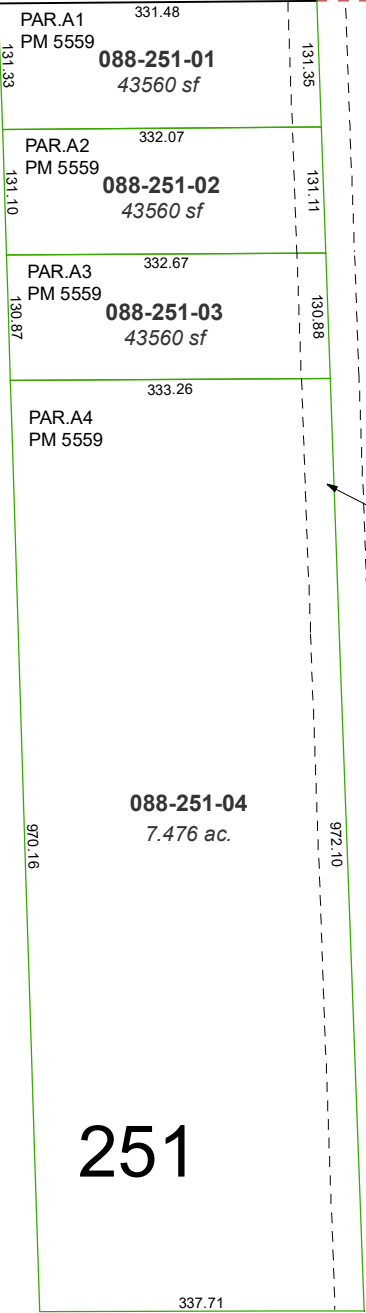


PORTION OF NE¼ SECTION 15
T20N - R19E

E GOLDEN VALLEY ROAD

ESTATES ROAD

PONTIAC DRIVE

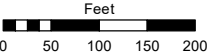


Assessor's Map Number

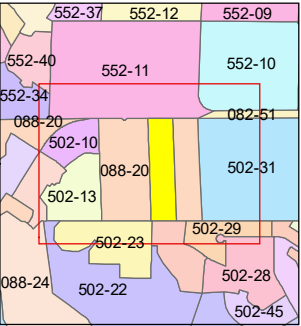
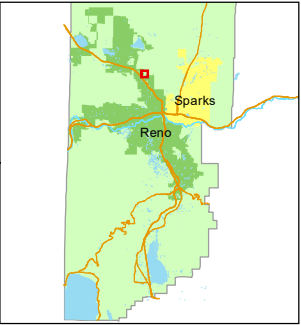
088-25

STATE OF NEVADA
WASHOE COUNTY
ASSESSOR'S OFFICE

1001 East Ninth Street, Building D
Reno, Nevada 89512
(775) 328-2231



1 inch = 200 feet



created by: SR 10/19/2021

updated: _____

area previously shown on map(s):

088-20

NOTE: This map was prepared for the use of the Washoe County Assessor for assessment and illustrative purposes only. It does not represent a survey of the premises. No liability is assumed as to the sufficiency or accuracy of the data delineated hereon.