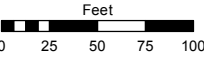
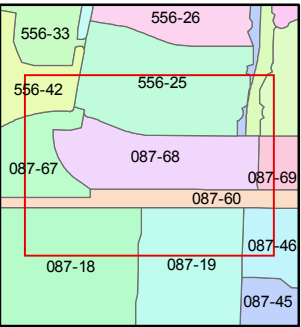
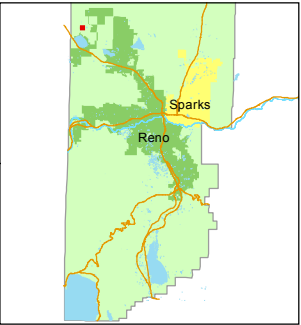


STATE OF NEVADA
WASHOE COUNTY
ASSESSOR'S OFFICE
Michael E. Clark, Assessor

1001 East Ninth Street
Building D
Reno, Nevada 89512
(775) 328-2231



1 inch = 100 feet



created by: EMG 6/26/2015

last updated: _____

area previously shown on map(s)

087-02

NOTE: This map was prepared for the use of the Washoe County Assessor for assessment and illustrative purposes only. It does not represent a survey of the premises. No liability is assumed as to the sufficiency or accuracy of the data delineated hereon.

(#3970)
WOODLAND VILLAGE
PHASE 4

PORTIONS OF THE NORTH ½ AND
THE SE ¼ OF SECTION 16
T21N - R18E

VILLAGE PARKWAY

VILLAGE PARKWAY

GEORGETOWN DRIVE

GEORGETOWN COURT

SANDPIPER DRIVE

