

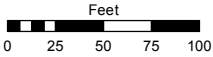
(#1794)  
**COLD SPRINGS VALLEY HOMES UNIT NO. 2**  
PORTION OF THE NE ¼ SECTION 21  
T21N - R18E

Assessor's Map Number

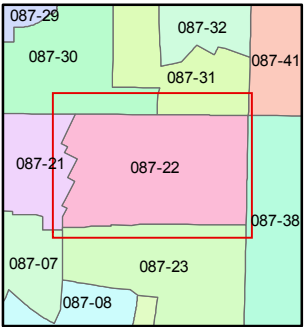
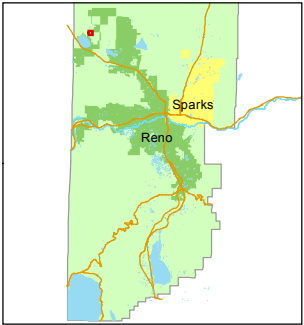
**087-22**

STATE OF NEVADA  
**WASHOE COUNTY**  
**ASSESSOR'S OFFICE**  
Michael E. Clark, Assessor

1001 East Ninth Street  
Building D  
Reno, Nevada 89512  
(775) 328-2231



1 inch = 100 feet



created by: EMG 9/22/2015

last updated: \_\_\_\_\_

area previously shown on map(s)

087-02

NOTE: This map was prepared for the use of the Washoe County Assessor for assessment and illustrative purposes only. It does not represent a survey of the premises. No liability is assumed as to the sufficiency or accuracy of the data delineated herein.

