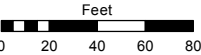
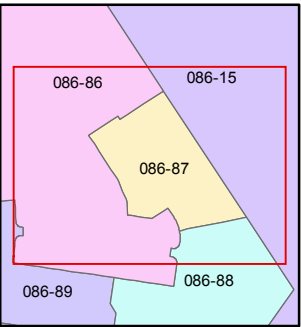
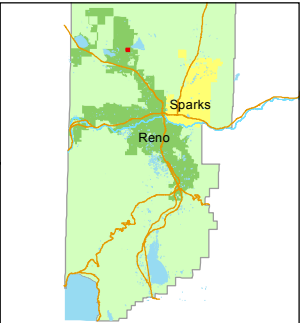


STATE OF NEVADA
WASHOE COUNTY
ASSESSOR'S OFFICE
Joshua G. Wilson, Assessor

1001 East Ninth Street
Building D
Reno, Nevada 89512
(775) 328-2231



1 inch = 80 feet



created by: EMG 7/22/2014

last updated: _____

area previously shown on map(s)

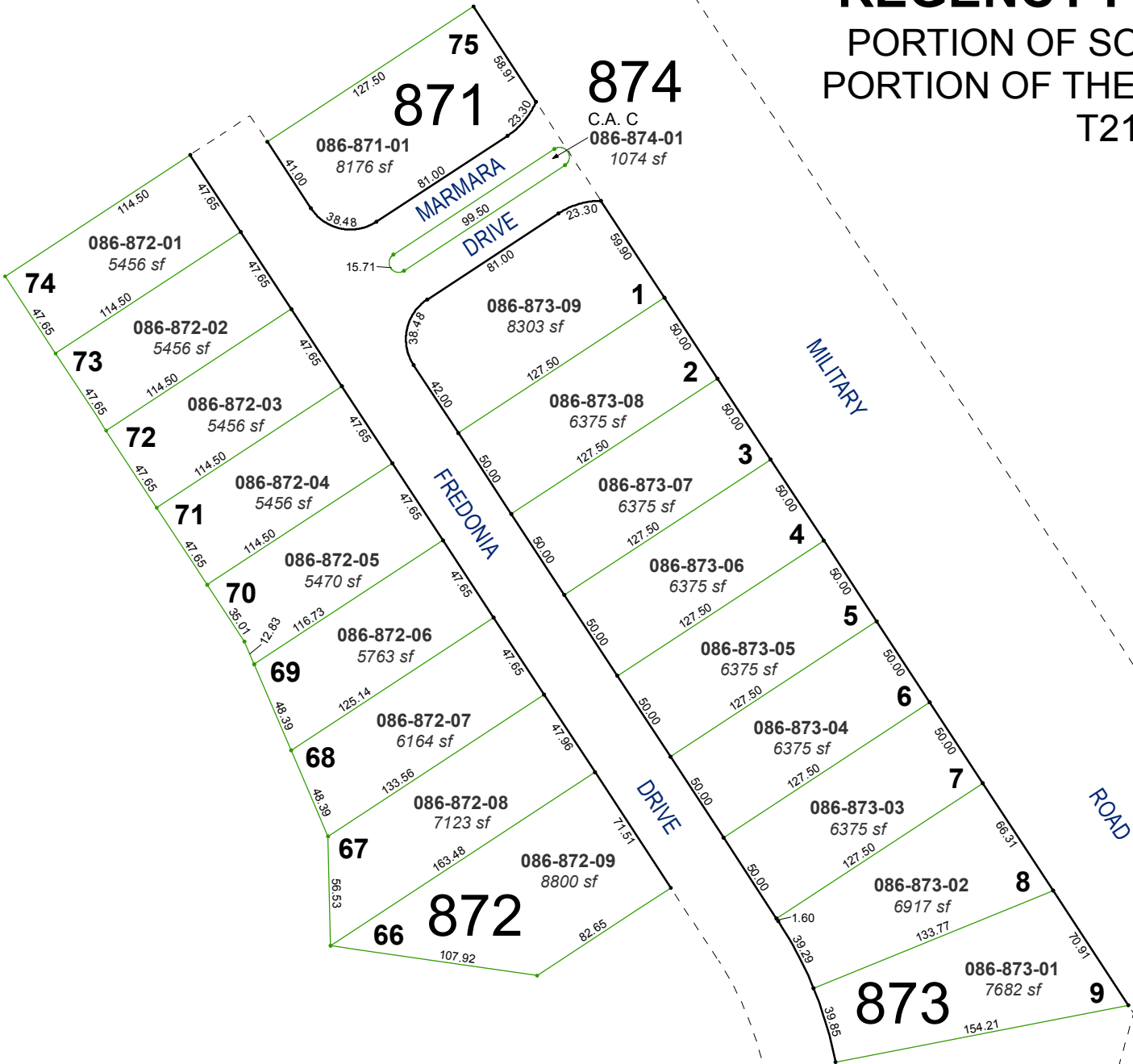
086-15

NOTE: This map was prepared for the use of the Washoe County Assessor for assessment and illustrative purposes only. It does not represent a survey of the premises. No liability is assumed as to the sufficiency or accuracy of the data delineated hereon.

(#4756)

REGENCY PARK PHASE 1-A

PORTION OF SOUTH ½ SECTION 29 &
PORTION OF THE NORTH ½ SECTION 32
T21N - R19E



C.A. = COMMON AREA