

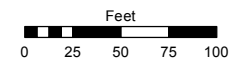
(#1990)  
**HAMPTON COURT ESTATES**  
A CLUSTER SUBDIVISION

(#2219)  
**SIERRA VIEW ESTATES UNIT ONE**  
A CLUSTER SUBDIVISION  
POR. OF SW¼ SEC. 29 & POR. OF NW¼ SEC. 32  
T21N - R19E

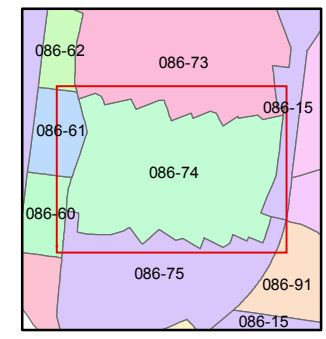
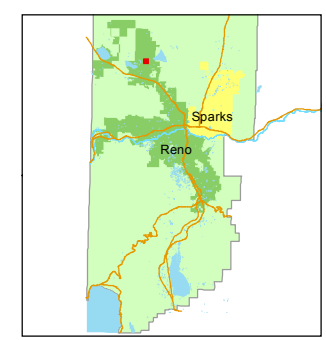
Assessor's Map Number  
**086-74**

STATE OF NEVADA  
**WASHOE COUNTY**  
ASSESSOR'S OFFICE  
Joshua G. Wilson, Assessor

1001 East Ninth Street  
Building D  
Reno, Nevada 89512  
(775) 328-2231



1 inch = 100 feet



created by: EMG 7/21/2014

last updated: \_\_\_\_\_

area previously shown on map(s) \_\_\_\_\_

NOTE: This map was prepared for the use of the Washoe County Assessor for assessment and illustrative purposes only. It does not represent a survey of the premises. No liability is assumed as to the sufficiency or accuracy of the data delineated hereon.

NOTE: Streets are private and parceled on 86-15

