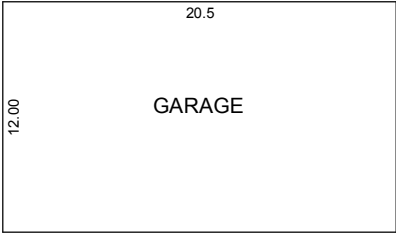
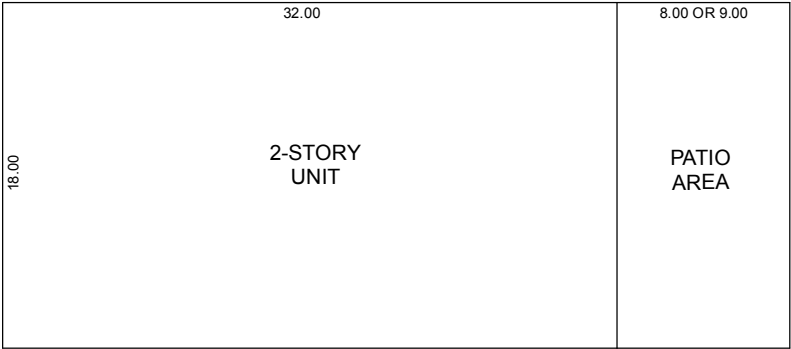


(#1812)  
**ELDORADO VILLAS**  
A CONDOMINIUM SUBDIVISION  
POR. OF WEST ½ SEC. 32  
T21N - R19E  
UNDIVIDED 1/90 INTEREST  
IN COMMON AREA

TYPICAL UNITS



8.00 OR 10.00



SCALE : 1"=10'

Units are shown on Pages 086-67-S1 and 086-67-S2.

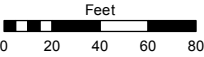


Assessor's Map Number

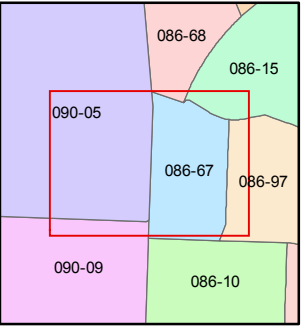
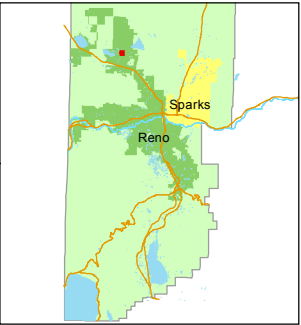
**086-67**

STATE OF NEVADA  
**WASHOE COUNTY**  
**ASSESSOR'S OFFICE**  
Joshua G. Wilson, Assessor

1001 East Ninth Street  
Building D  
Reno, Nevada 89512  
(775) 328-2231



1 inch = 80 feet



created by: EMG 11/20/2014

last updated: \_\_\_\_\_

area previously shown on map(s)

086-10

NOTE: This map was prepared for the use of the Washoe County Assessor for assessment and illustrative purposes only. It does not represent a survey of the premises. No liability is assumed as to the sufficiency or accuracy of the data delineated hereon.