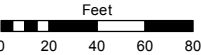
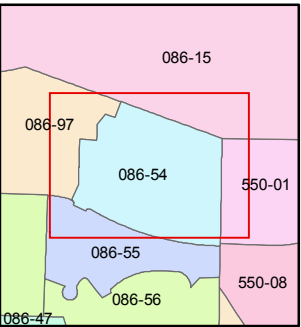
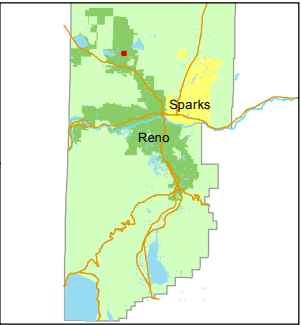


STATE OF NEVADA
WASHOE COUNTY
ASSESSOR'S OFFICE
Michael E. Clark, Assessor

1001 East Ninth Street
Building D
Reno, Nevada 89512
(775) 328-2231



1 inch = 80 feet



created by: EMG 3/12/2015

last updated: _____

area previously shown on map(s)

086-10

NOTE: This map was prepared for the use of the Washoe County Assessor for assessment and illustrative purposes only. It does not represent a survey of the premises. No liability is assumed as to the sufficiency or accuracy of the data delineated hereon.

(#1739)

GRANITE HILLS SUBDIVISION UNIT NO. 2

A DENSITY SUBDIVISION

PORTION OF THE WEST ½ SECTION 32
T21N - R19E

C

118

117

116

115

114

113

112

111

110

109

108

107

106

105

104

103

102

101

100

99

98

97

96

95

94

93

086-541-62

0.002 ac.

086-541-61

0.075 ac.

086-541-60

0.072 ac.

086-541-59

0.069 ac.

086-541-58

0.104 ac.

086-541-57

0.060 ac.

086-541-56

0.069 ac.

086-541-55

0.067 ac.

086-541-54

0.067 ac.

086-541-53

0.067 ac.

086-541-52

0.067 ac.

086-541-51

0.067 ac.

086-541-50

0.067 ac.

086-541-49

0.067 ac.

086-541-48

0.067 ac.

086-541-47

0.067 ac.

086-541-46

0.067 ac.

086-541-45

LEAR

HUMITE

ZEOLITE

DRIVE

DRIVE

LANE

BOULEVARD

ZEOLITE

MALACHITE COURT

C

118

117

116

115

114

113

112

111

110

109

108

107

106

105

104

103

102

101

100

99

98

97

96

95

94

93

92

91

90

89

88

87

86

086-541-62

0.002 ac.

086-541-61

0.075 ac.

086-541-60

0.072 ac.

086-541-59

0.069 ac.

086-541-58

0.104 ac.

086-541-57

0.060 ac.

086-541-56

0.069 ac.

086-541-55

0.067 ac.

086-541-54

0.067 ac.

086-541-53

0.067 ac.

086-541-52

0.067 ac.

086-541-51

0.067 ac.

086-541-50

0.067 ac.

086-541-49

0.067 ac.

086-541-48

0.067 ac.

086-541-47

0.067 ac.

086-541-46

LEAR

HUMITE

ZEOLITE

DRIVE

DRIVE

LANE

BOULEVARD

ZEOLITE

MALACHITE COURT

C

118

117

116

115

114

113

112

111

110

109

108

107

106

105

104

103

102

101

100

99

98

97

96

95

94

93

92

91

90

89

88

87

86

086-541-62

0.002 ac.

086-541-61

0.075 ac.

086-541-60

0.072 ac.

086-541-59

0.069 ac.

086-541-58

0.104 ac.

086-541-57

0.060 ac.

086-541-56

0.069 ac.

086-541-55

0.067 ac.

086-541-54

0.067 ac.

086-541-53

0.067 ac.

086-541-52

0.067 ac.

086-541-51

0.067 ac.

086-541-50

0.067 ac.

086-541-49

0.067 ac.

086-541-48

0.067 ac.

086-541-47

0.067 ac.

086-541-46