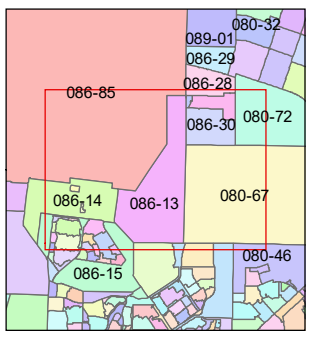
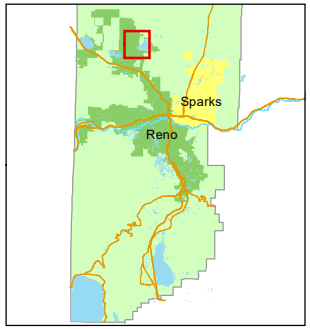
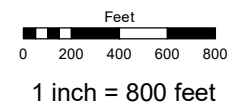


PORTION OF SECTIONS 21, 28, & 29  
T21N - R19E

Assessor's Map Number  
**086-13**

STATE OF NEVADA  
**WASHOE COUNTY**  
**ASSESSOR'S OFFICE**  
1001 East Ninth Street, Building D  
Reno, Nevada 89512  
(775) 328-2231



created by: EMG 11/17/2014

updated: SR 06/20/19

---

area previously shown on map(s):  
080-67

NOTE: This map was prepared for the use of the Washoe County Assessor for assessment and illustrative purposes only. It does not represent a survey of the premises. No liability is assumed as to the sufficiency or accuracy of the data delineated hereon.