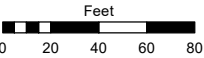
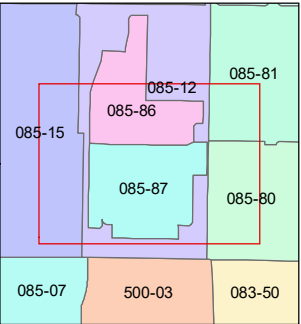
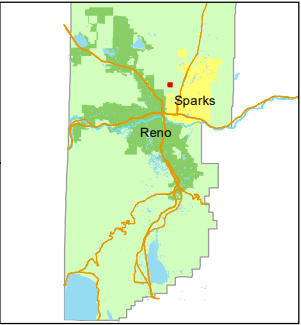


STATE OF NEVADA
WASHOE COUNTY
ASSESSOR'S OFFICE
1001 East Ninth Street, Building D
Reno, Nevada 89512
(775) 328-2231



1 inch = 80 feet



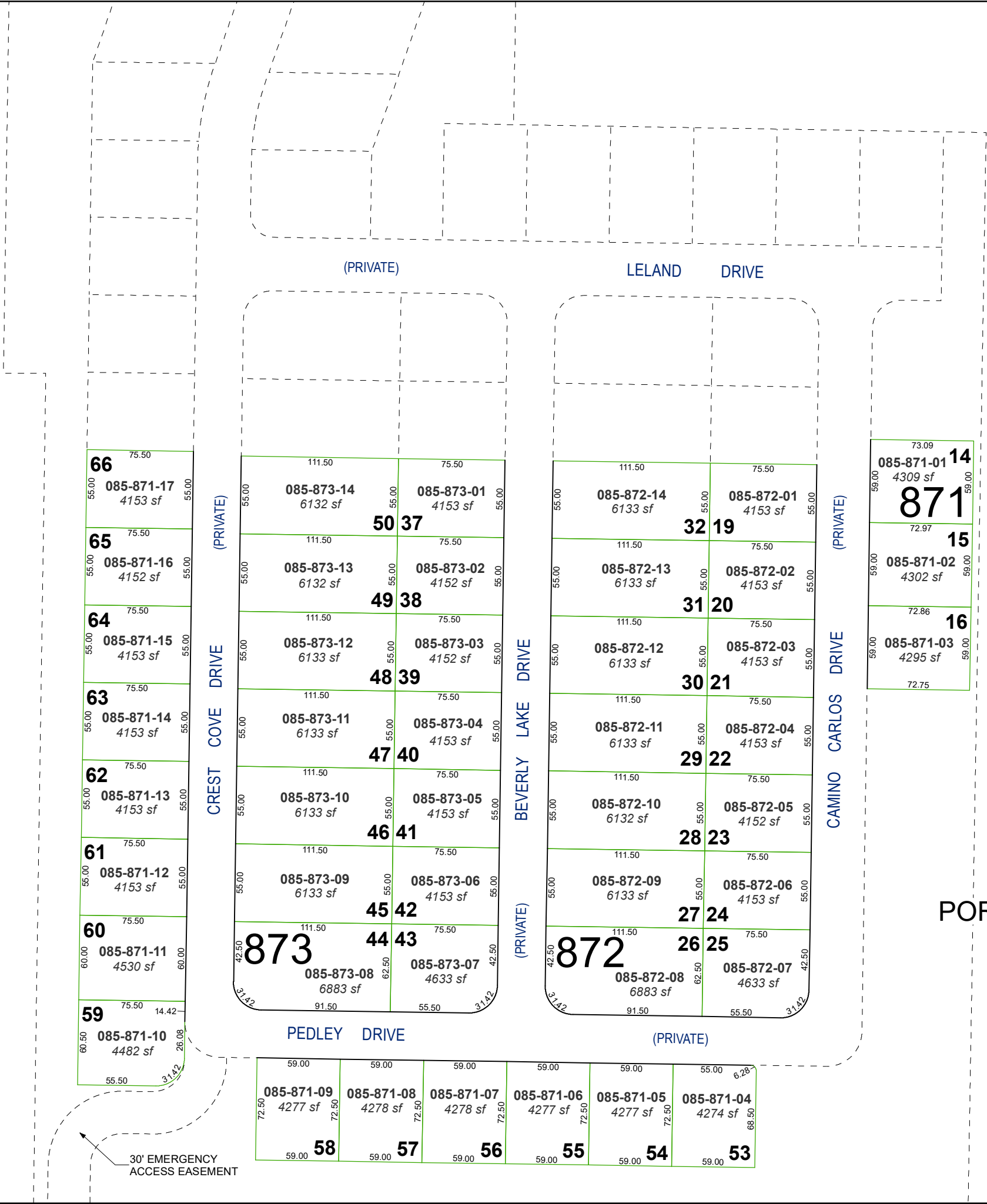
created by: SR 04/11/2022

updated: _____

area previously shown on map(s):

085-12

NOTE: This map was prepared for the use of the Washoe County Assessor for assessment and illustrative purposes only. It does not represent a survey of the premises. No liability is assumed as to the sufficiency or accuracy of the data delineated hereon.



**(#5484)
VALLE VISTA
COMMUNITY**

PORTION OF NW¼ SECTION 20
T20N - R20E