

LUPIN COURT

DRIVE

LUPIN

EAST

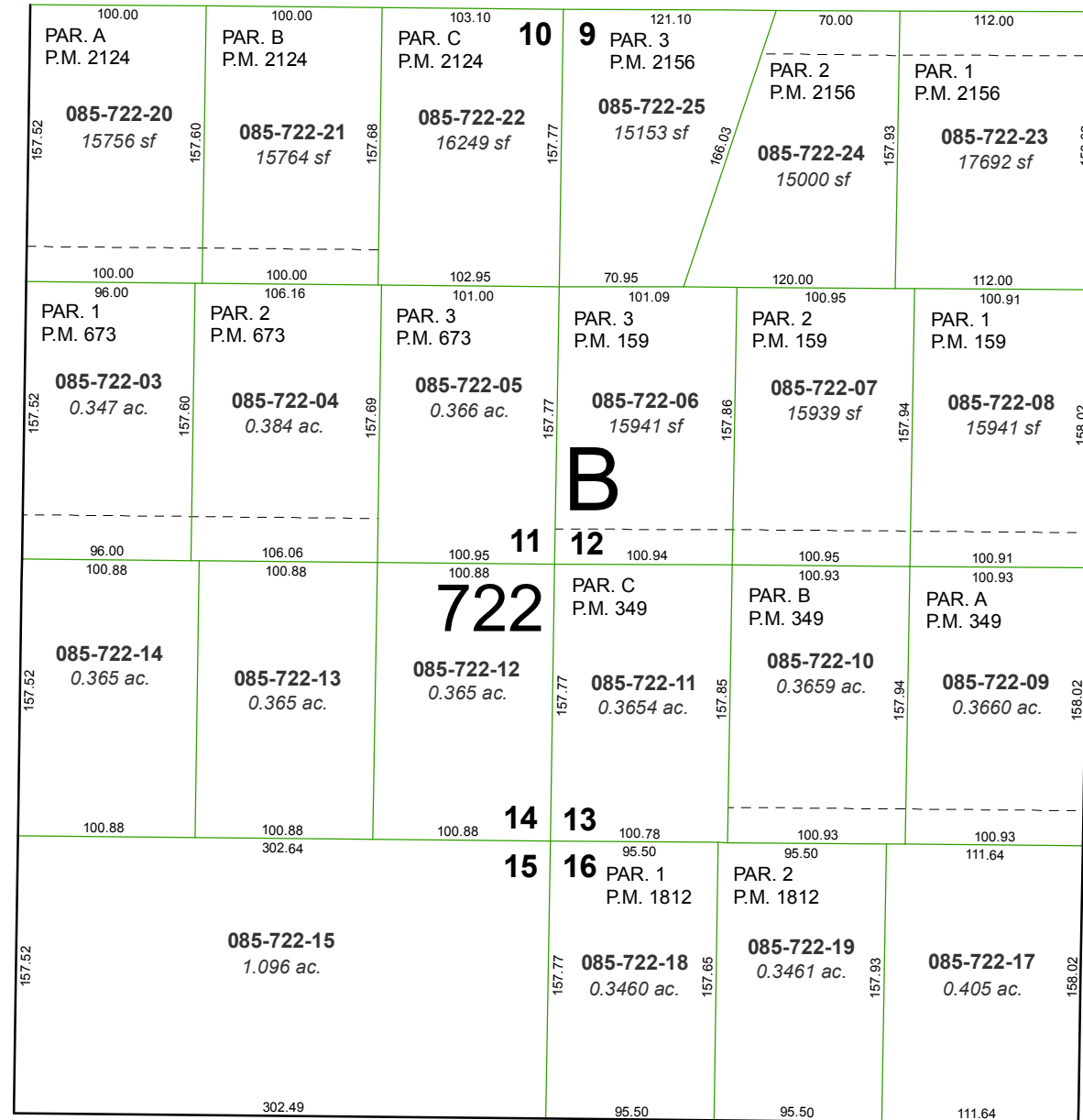
FOURTH

MADEIROS DRIVE

S ½ OF NW ¼ OF NW ¼ OF SECTION 20
T20N - R20E

(#574)

SUN VALLEY SUBDIVISION NO.6



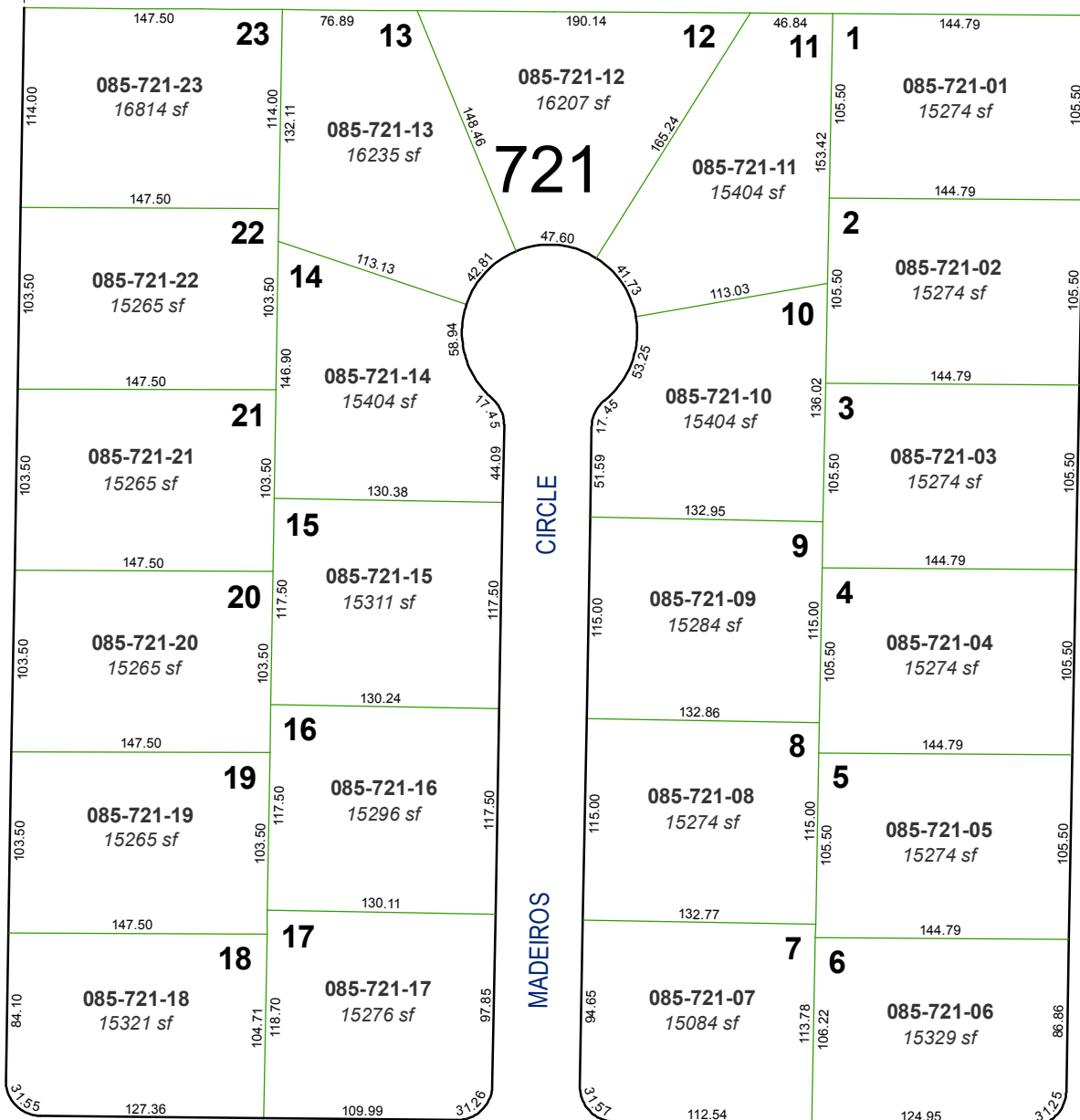
(#2035)

PEARL TERRACE MOBILE HOME ESTATES

A RESUBDIVISION OF LOTS 7 THRU 10
BLOCK "A" - SUN VALLEY SUBDIVISION NO. 6

DRIVE

PEARL



CIRCLE

MADEIROS

AVENUE

GLENMYRA CIRCLE

DRIVE

YUKON

Assessor's Map Number

085-72

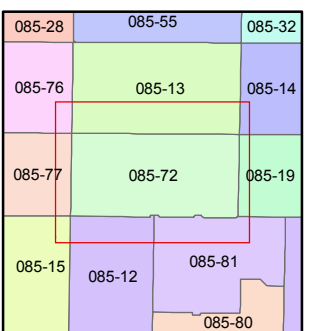
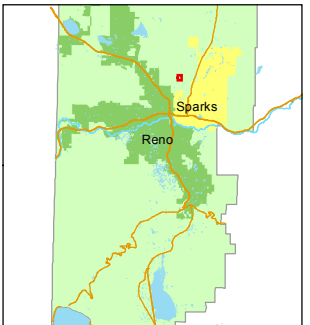
STATE OF NEVADA
WASHOE COUNTY
ASSESSOR'S OFFICE
Joshua G. Wilson, Assessor

1001 East Ninth Street
Building D
Reno, Nevada 89512
(775) 328-2231



Feet
0 25 50 75 100

1 inch = 100 feet



created by: TWT 8/24/2011

last updated:

area previously shown on map(s)

NOTE: This map was prepared for the use of the Washoe County Assessor for assessment and illustrative purposes only. It does not represent a survey of the premises. No liability is assumed as to the sufficiency or accuracy of the data delineated hereon.