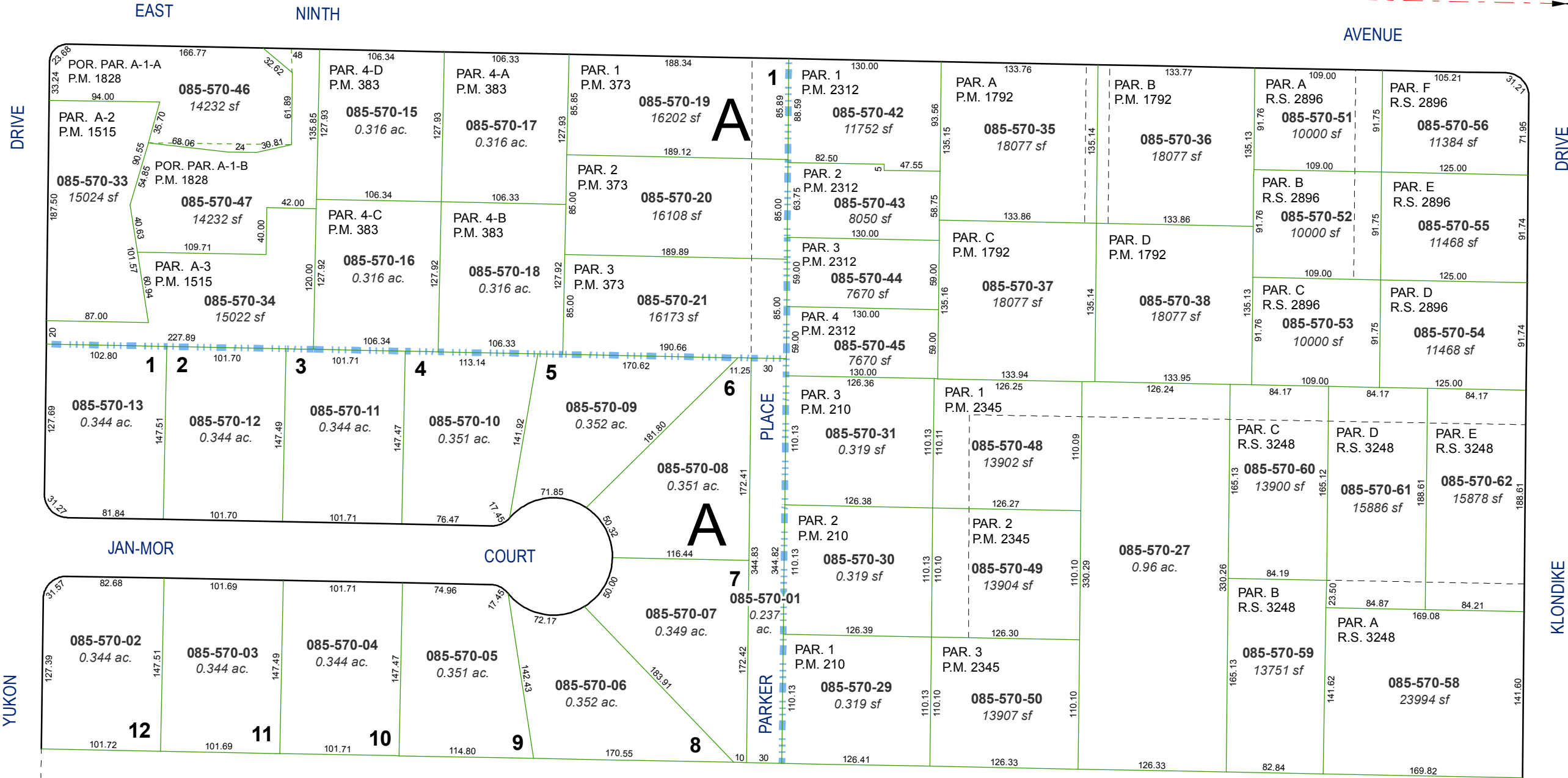


(#573)
SUN VALLEY SUBDIVISION NO. 5

NORTH ½ OF NE ¼ OF NW ¼ OF SEC. 17
T20N - R20E

N 1/4 COR.
SEC. 17

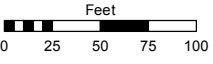


(#1749)
JAN-MOR SUBDIVISION

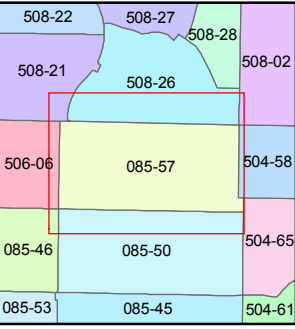
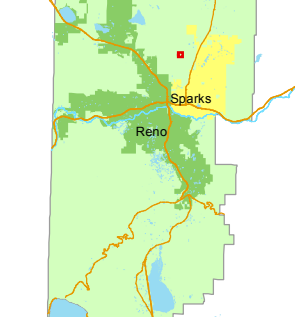
Assessor's Map Number
085-57

STATE OF NEVADA
WASHOE COUNTY
ASSESSOR'S OFFICE
Joshua G. Wilson, Assessor

1001 East Ninth Street
Building D
Reno, Nevada 89512
(775) 328-2231



1 inch = 100 feet



created by: TWT 7/14/2011

last updated:

area previously shown on map(s)

NOTE: This map was prepared for the use of the Washoe County Assessor for assessment and illustrative purposes only. It does not represent a survey of the premises. No liability is assumed as to the sufficiency or accuracy of the data delineated hereon.