

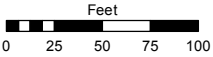
(#573)
SUN VALLEY SUBDIVISION No. 5
S ½ OF SW ¼ OF SW ¼ OF SECTION 17
T20N - R20E

Assessor's Map Number

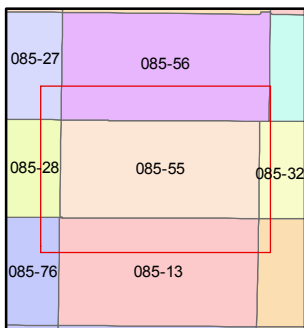
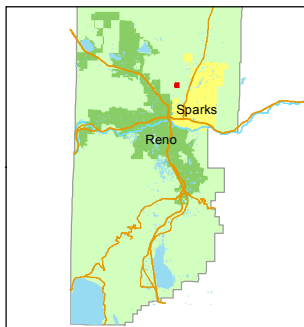
085-55

STATE OF NEVADA
WASHOE COUNTY
ASSESSOR'S OFFICE
Michael E. Clark, Assessor

1001 East Ninth Street
Building D
Reno, Nevada 89512
(775) 328-2231



1 inch = 100 feet



created by: TWT 8/5/2011

last updated: JKF 10/12/17

area previously shown on map(s)

NOTE: This map was prepared for the use of the Washoe County Assessor for assessment and illustrative purposes only. It does not represent a survey of the premises. No liability is assumed as to the sufficiency or accuracy of the data delineated hereon.

DRIVE

LUPIN

18
19
17
20

EAST

FIFTH

DRIVE

PEARL

DRIVE

ALOHA
WAY

YUKON

AVENUE