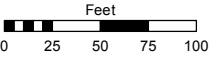
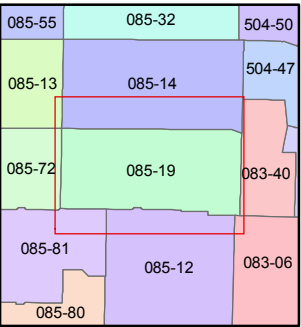
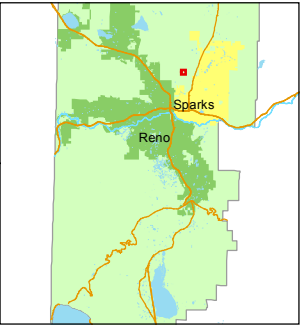


STATE OF NEVADA
WASHOE COUNTY
ASSESSOR'S OFFICE
Joshua G. Wilson, Assessor

1001 East Ninth Street
Building D
Reno, Nevada 89512
(775) 328-2231



1 inch = 100 feet



created by: TWT 8/26/2011

last updated:

area previously shown on map(s)

NOTE: This map was prepared for the use of the Washoe County Assessor for assessment and illustrative purposes only. It does not represent a survey of the premises. No liability is assumed as to the sufficiency or accuracy of the data delineated hereon.

GLENMYRA

CIRCLE

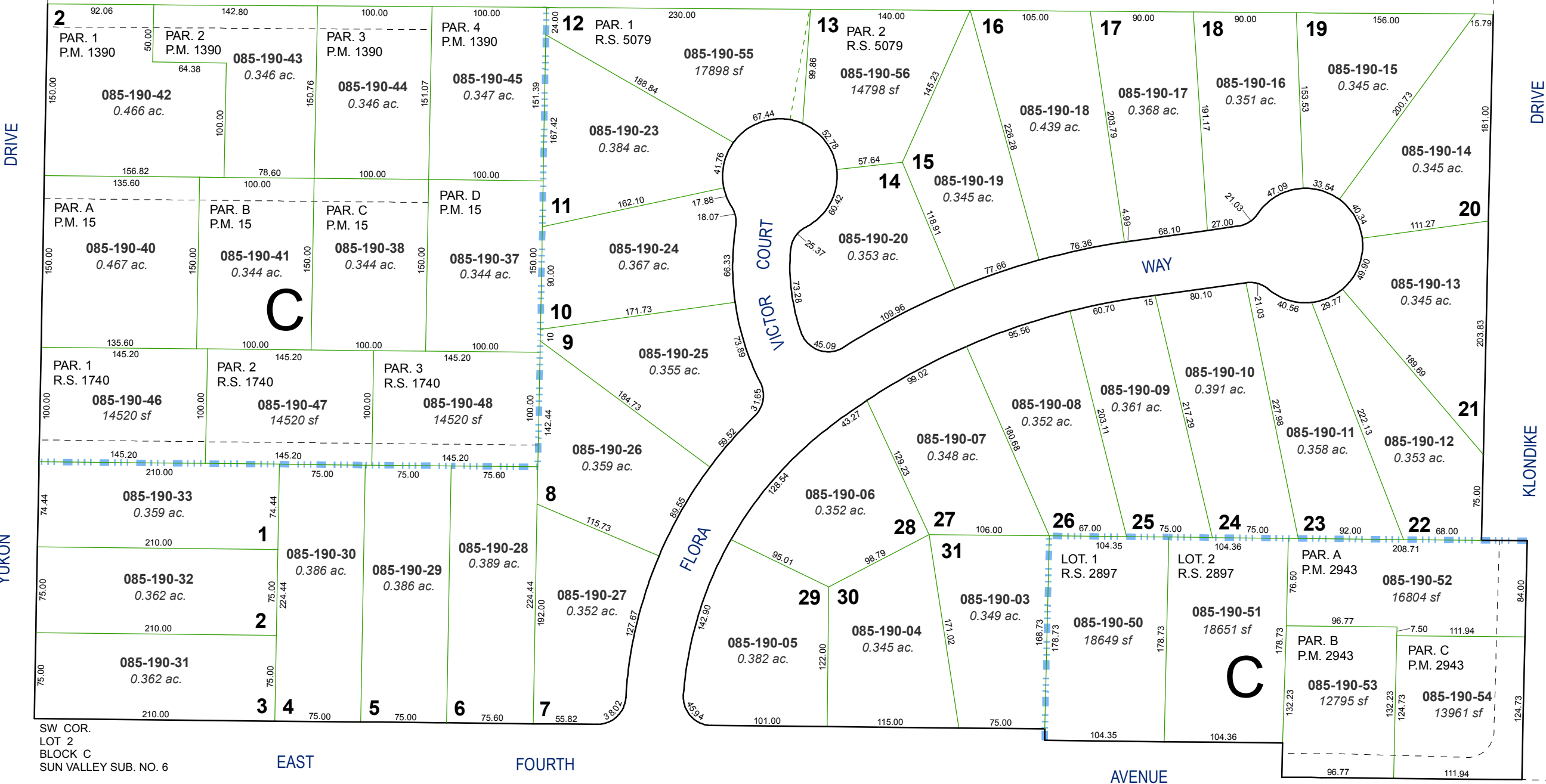
WHITEHORSE

S ½ OF NE ¼ OF NW ¼ OF SECTION 20, T20N - R20E

(#1251)

RIM ROCK ESTATES

PORTION OF LOT 2, BLOCK C
SUN VALLEY SUB. No. 6 (#574)



SW COR.
LOT 2
BLOCK C
SUN VALLEY SUB. NO. 6