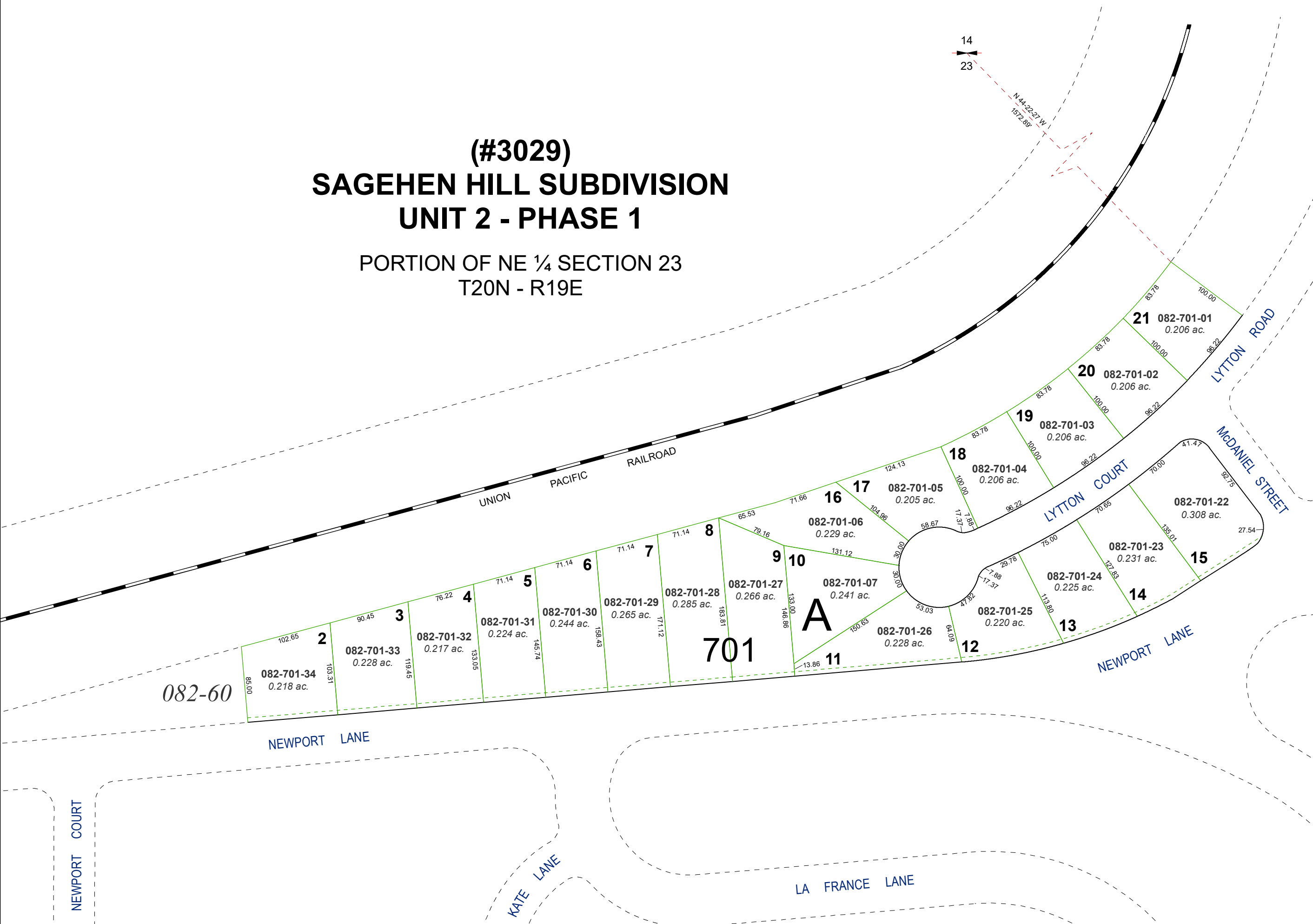


(#3029)
SAGEHEN HILL SUBDIVISION
UNIT 2 - PHASE 1

PORTION OF NE ¼ SECTION 23
T20N - R19E

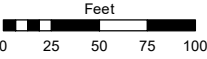


Assessor's Map Number

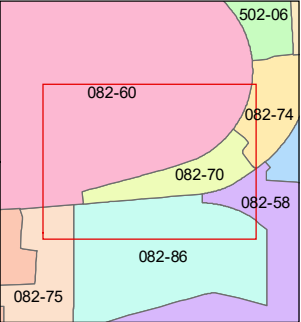
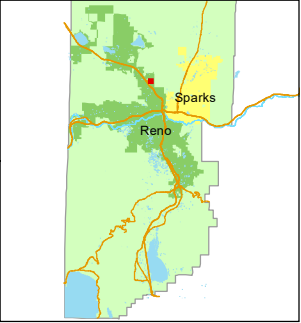
082-70

STATE OF NEVADA
WASHOE COUNTY
ASSESSOR'S OFFICE

1001 East Ninth Street, Building D
Reno, Nevada 89512
(775) 328-2231



1 inch = 100 feet



created by: SR 8/23/2023

updated: _____

area previously shown on map(s):

082-59

NOTE: This map was prepared for the use of the Washoe County Assessor for assessment and illustrative purposes only. It does not represent a survey of the premises. No liability is assumed as to the sufficiency or accuracy of the data delineated hereon.