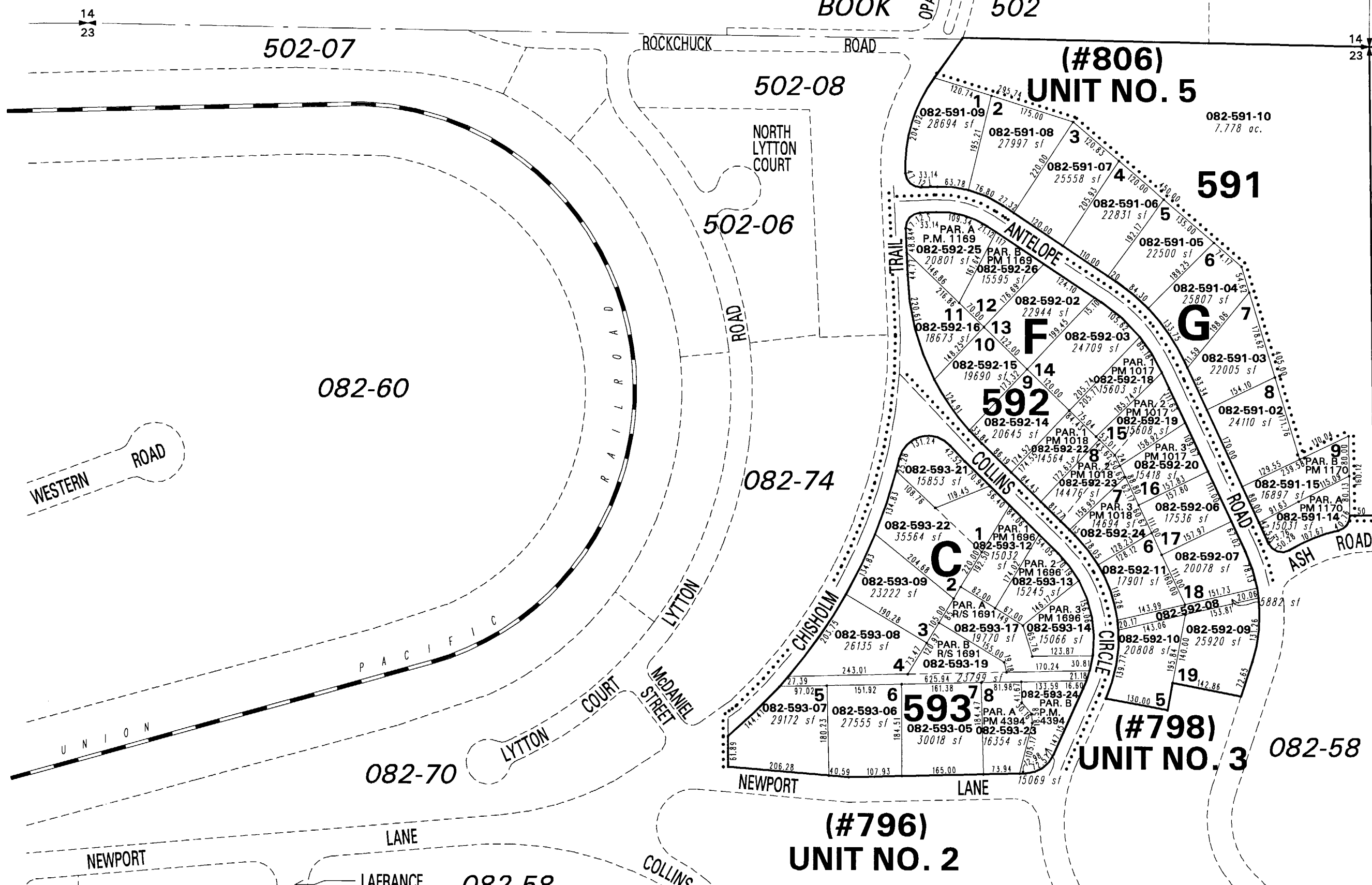


PORTION OF THE NE 1/4 OF SEC. 23, T20N - R19E &
ROLLING HILLS RANCHOS

082-59



NOTE: This map is prepared for the use of the Washoe County Assessor for assessment and illustrative purposes only. It does not represent a survey of the premises. No liability is assumed as to the sufficiency or the accuracy of the data delineated hereon.

Office of Washoe County Assessor, Nevada - Joshua G. Wilson

This area previously shown on

NOTE: Areas of parcels which are less than 2 acres are shown in square feet.

Drawn by TWT 07/18/05
Revised NLH 07/06/07