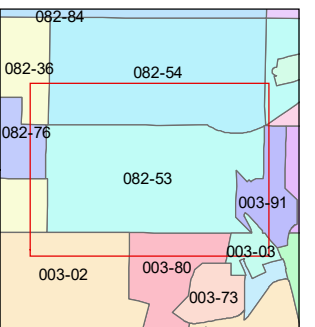
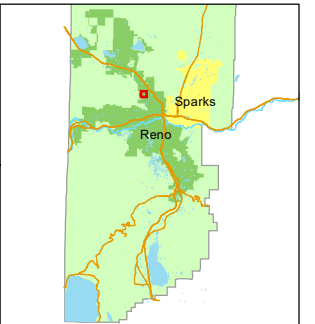


1 inch = 200 feet



created by: CFB 01/26/2011

updated: JRA 01/02/24

area previously shown on map(s):

NOTE: This map was prepared for the use of the Washoe County Assessor for assessment and illustrative purposes only. It does not represent a survey of the premises. No liability is assumed as to the sufficiency or accuracy of the data delineated hereon.

S½ OF NE¼ SECTION 27  
T20N - R19E

City of Reno  
Easement

U. P. R. R. R/W

NORTH VIRGINIA  
FIRE STATION #10

531

082-531-03  
2.265 ac.

082-531-09  
4.456 ac.

NOTE: Street easement lines for Mobile Manor Dr., Paul St., and Ann St. were taken from aerial photos. Street widths and locations are approximate.

(OLD U.S. HWY. 395)

NORTH VIRGINIA STREET

STOLTZ ROAD

KOENIG ROAD

HOGE ROAD

ROAD

EISAN AVENUE

Washoe County  
City of Reno

