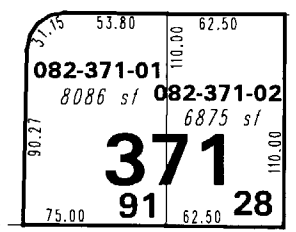
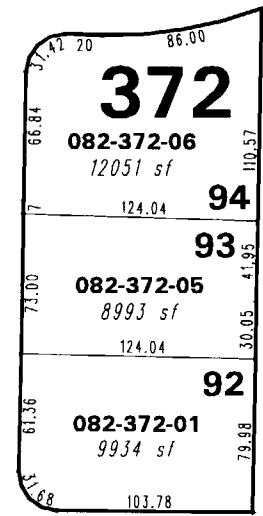
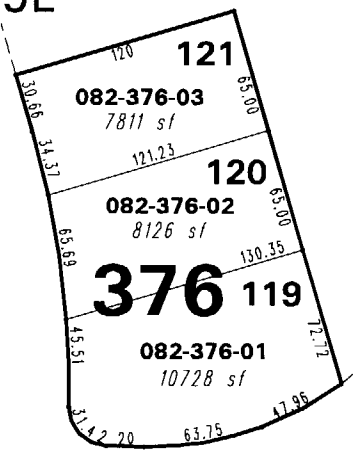
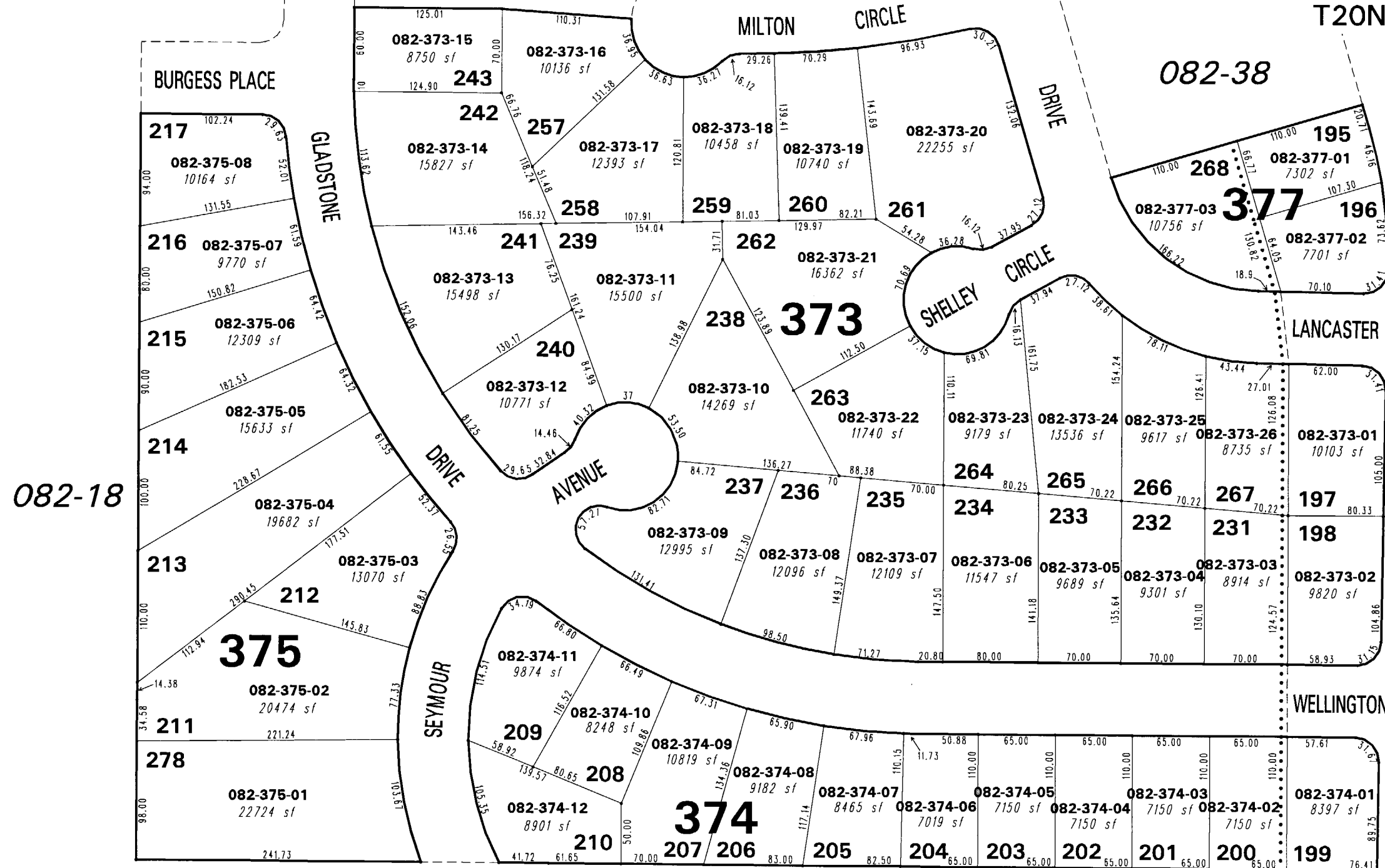


082-37

082-38

(#981)
**RALEIGH HEIGHTS
SUBDIVISION UNIT NO. 3**

(#965)
**RALEIGH HEIGHTS
SUBDIVISION UNIT NO. 2**
PORTION OF THE NW 1/4 OF SECTION 22
T20N - R19E



1" = 100'



NOTE: This map is prepared for the use of the Washoe County Assessor for assessment and illustrative purposes only. It does not represent a survey of the premises. No liability is assumed as to the sufficiency or the accuracy of the data delineated hereon.

Office of Washoe County Assessor, Nevada - Joshua G. Wilson

This area previously shown on _____

NOTE: Areas of parcels which are less than 2 acres are shown in square feet.

Drawn by NLH 02/15/07
Revised TWT 4/18/07