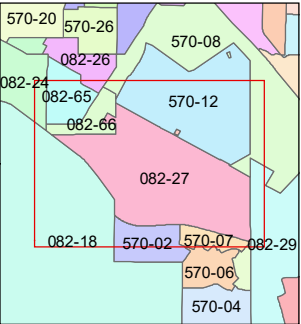
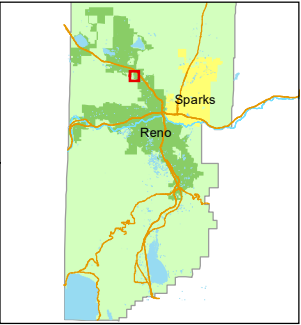


STATE OF NEVADA
WASHOE COUNTY
ASSESSOR'S OFFICE
1001 East Ninth Street, Building D
Reno, Nevada 89512
(775) 328-2231



Feet
0 75 150 225 300

1 inch = 300 feet



created by: CFB 03/29/2011

updated: KSB 07/18/11 SR 12/09/20

area previously shown on map(s):

NOTE: This map was prepared for the use of the Washoe County Assessor for assessment and illustrative purposes only. It does not represent a survey of the premises. No liability is assumed as to the sufficiency or accuracy of the data delineated hereon.

PORTION OF SECTION 16, T20N - R19E

