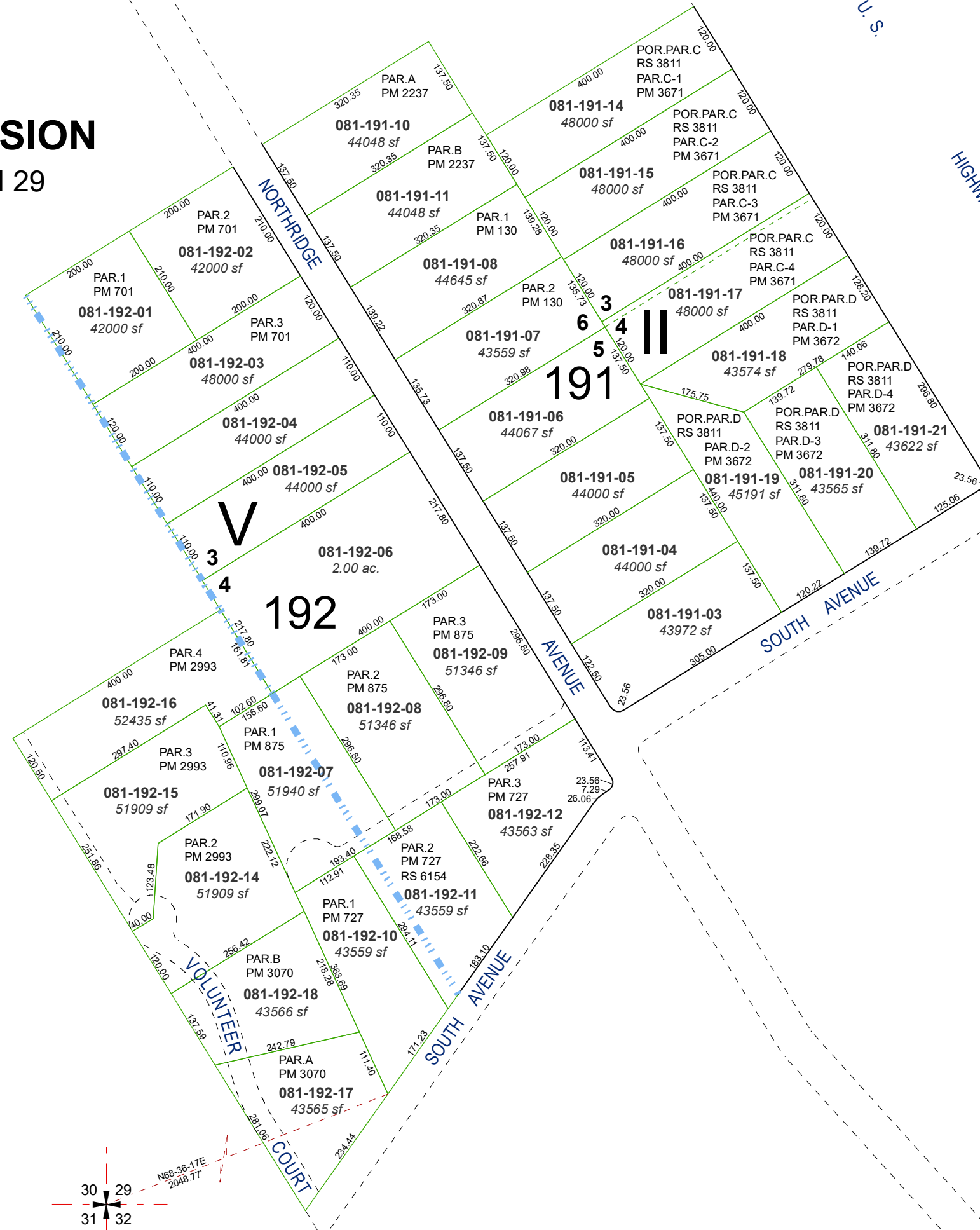


(#537)
(AMENDED)
NORTHRIDGE SUBDIVISION
PORTION OF SW¼ SECTION 29
T21N - R18E



Assessor's Map Number

081-19

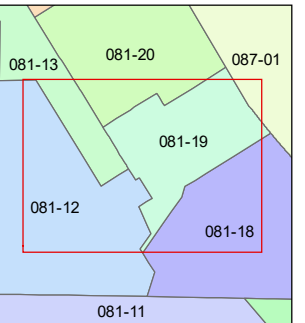
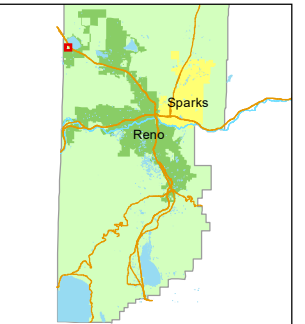
STATE OF NEVADA
WASHOE COUNTY
ASSESSOR'S OFFICE

1001 East Ninth Street, Building D
Reno, Nevada 89512
(775) 328-2231



Feet
0 50 100 150 200

1 inch = 200 feet



created by: SR 08/02/2021

updated: _____

area previously shown on map(s): _____

NOTE: This map was prepared for the use of the Washoe County Assessor for assessment and illustrative purposes only. It does not represent a survey of the premises. No liability is assumed as to the sufficiency or accuracy of the data delineated hereon.