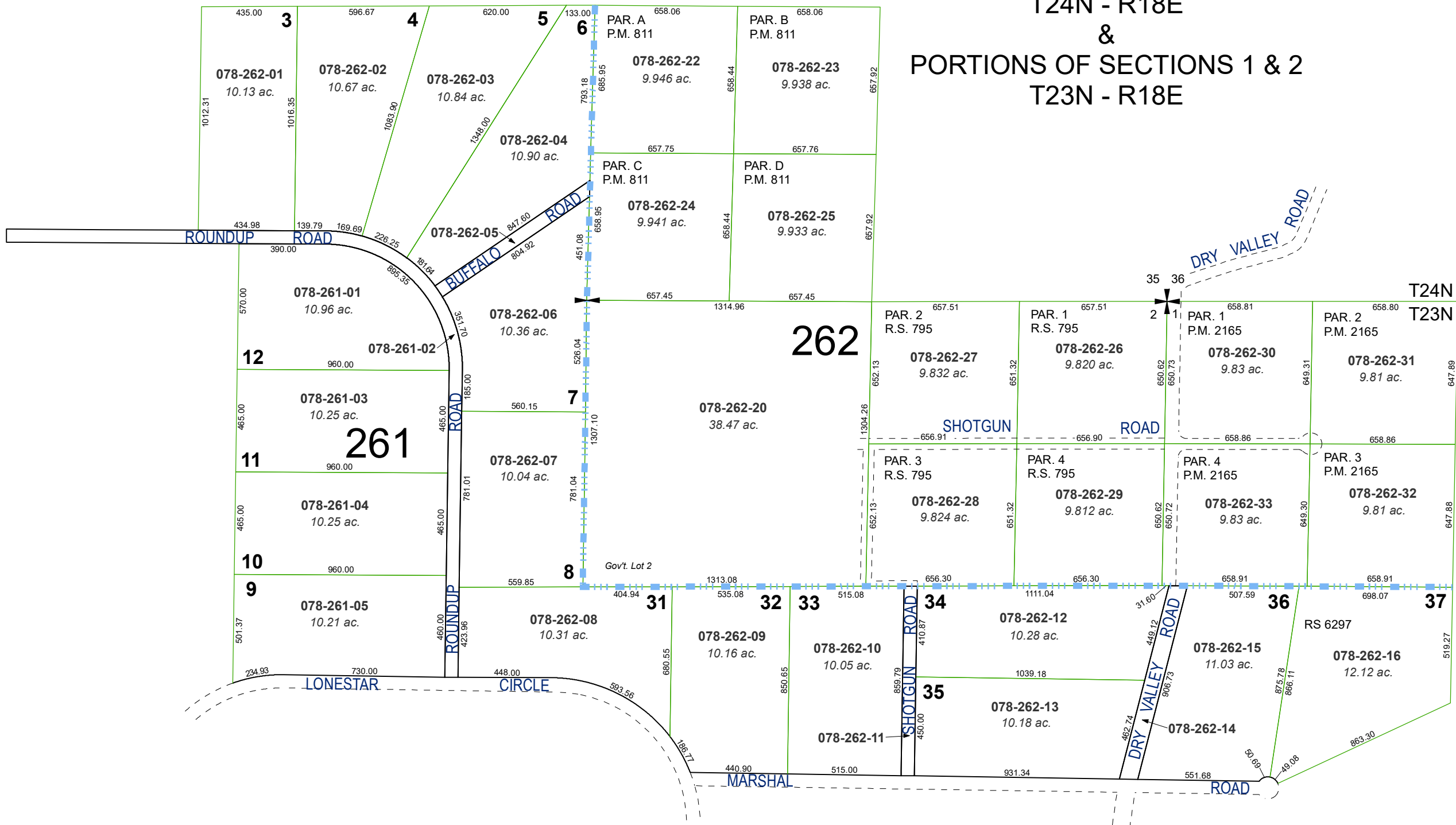


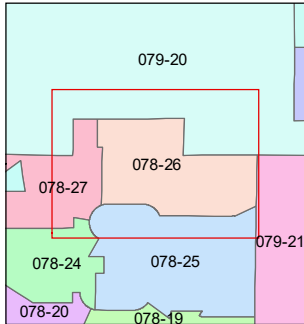
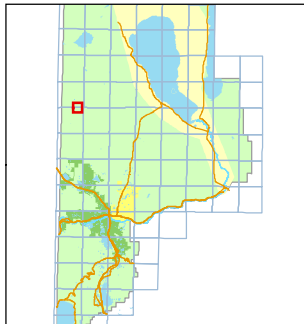
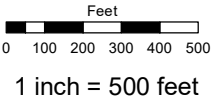
RECORD OF SURVEY # 684

PORTION OF SECTION 35
T24N - R18E
&
PORTIONS OF SECTIONS 1 & 2
T23N - R18E



Assessor's Map Number
078-26

STATE OF NEVADA
WASHOE COUNTY
ASSESSOR'S OFFICE
1001 East Ninth Street, Building D
Reno, Nevada 89512
(775) 328-2231



created by: TWT 3/23/2011
updated: JRA 10/15/21

area previously shown on map(s):

NOTE: This map was prepared for the use of the Washoe County Assessor for assessment and illustrative purposes only. It does not represent a survey of the premises. No liability is assumed as to the sufficiency or accuracy of the data delineated hereon.