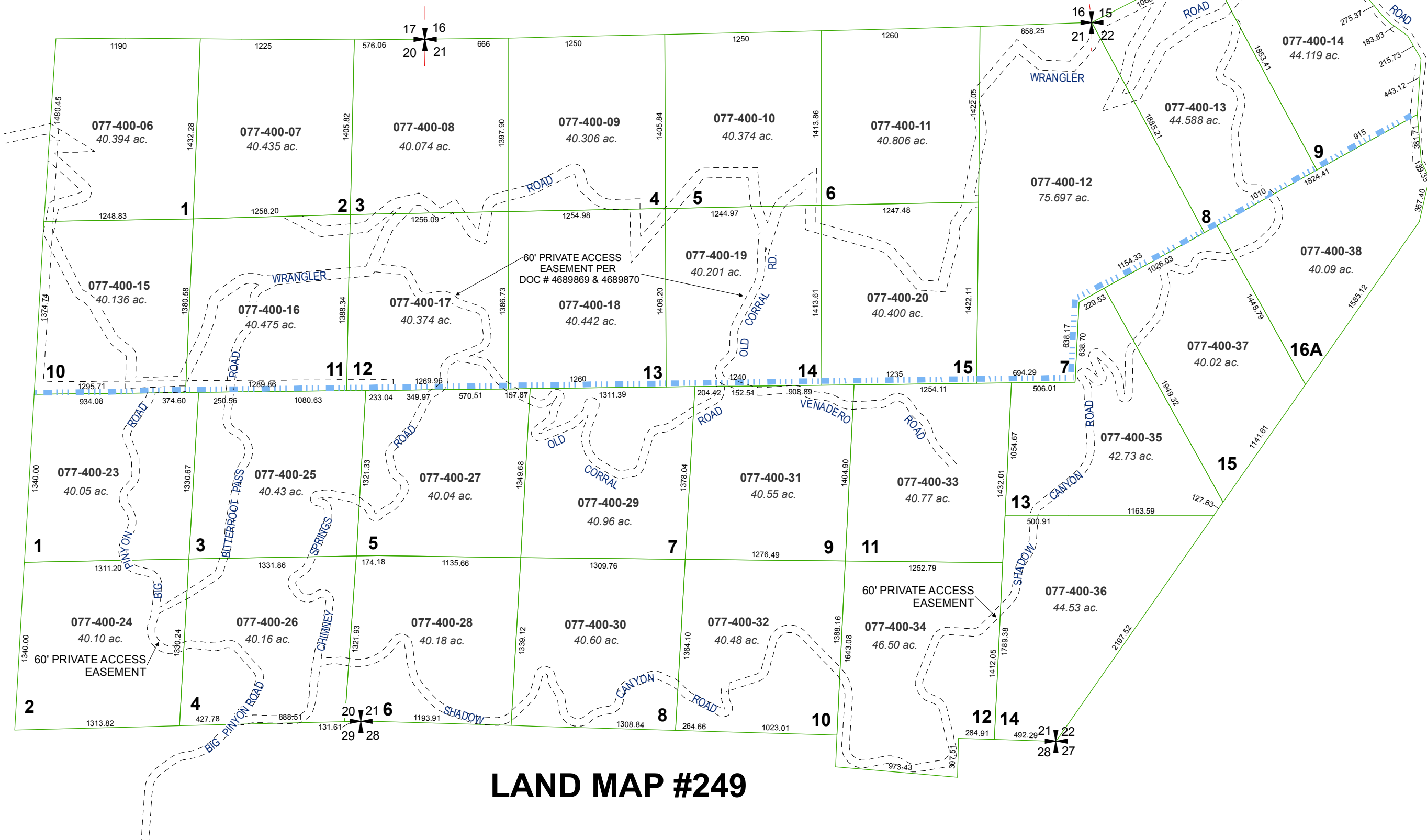


MAP OF DIVISION INTO LARGE PARCELS #91

SEC. 21 & E.1/2 SEC. 20, POR. SEC. 15, 22, & 28
T22N - R22E



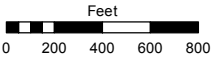
LAND MAP #249

Assessor's Map Number

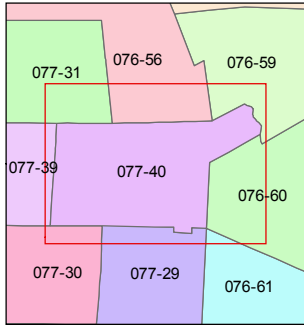
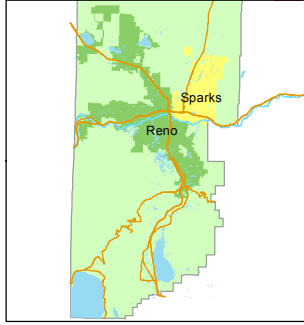
077-40

STATE OF NEVADA
WASHOE COUNTY
ASSESSOR'S OFFICE

1001 East Ninth Street, Building D
Reno, Nevada 89512
(775) 328-2231



1 inch = 800 feet



created by: TWT 5/1/2009

updated: JKF 10/9/18

area previously shown on map(s):
076-60

NOTE: This map was prepared for the use of the Washoe County Assessor for assessment and illustrative purposes only. It does not represent a survey of the premises. No liability is assumed as to the sufficiency or accuracy of the data delineated hereon.