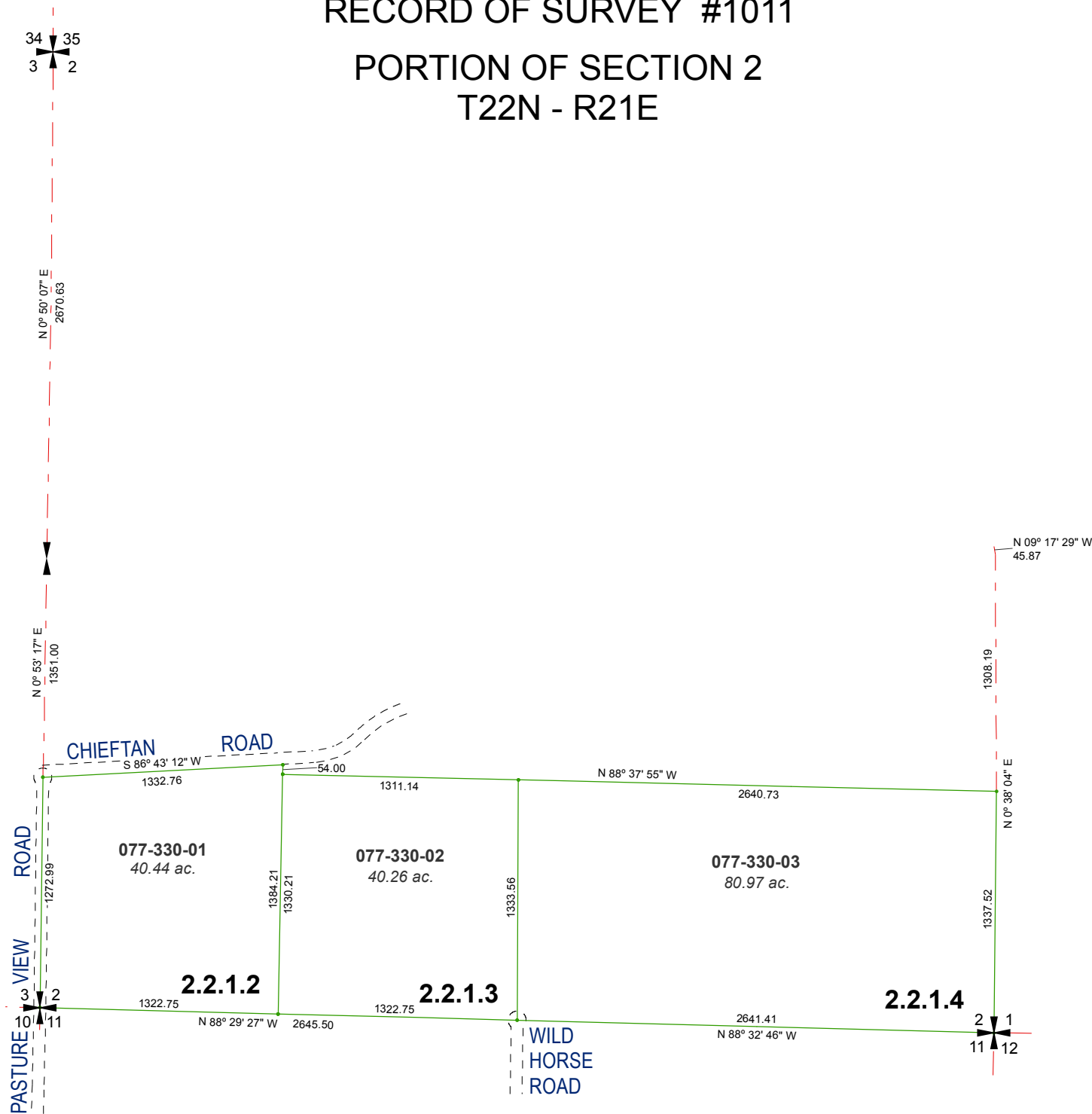


MAP OF DIVISION INTO LARGE PARCELS #14
PALOMINO VALLEY - UNIT NO. 8

RECORD OF SURVEY #1011
PORTION OF SECTION 2
T22N - R21E

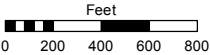


Assessor's Map Number

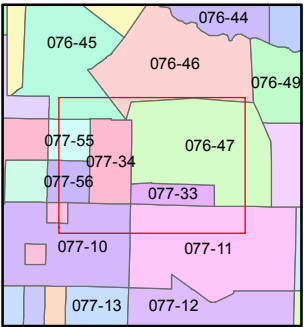
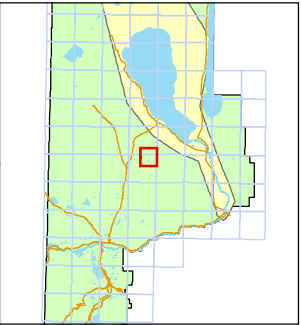
077-33

STATE OF NEVADA
WASHOE COUNTY
ASSESSOR'S OFFICE
Joshua G. Wilson, Assessor

1001 East Ninth Street
Building D
Reno, Nevada 89512
(775) 328-2231



1 inch = 800 feet



created by: TWT 4/21/2011

last updated: EMG 9/25/14

area previously shown on map(s)

NOTE: This map was prepared for the use of the Washoe County Assessor for assessment and illustrative purposes only. It does not represent a survey of the premises. No liability is assumed as to the sufficiency or accuracy of the data delineated hereon.