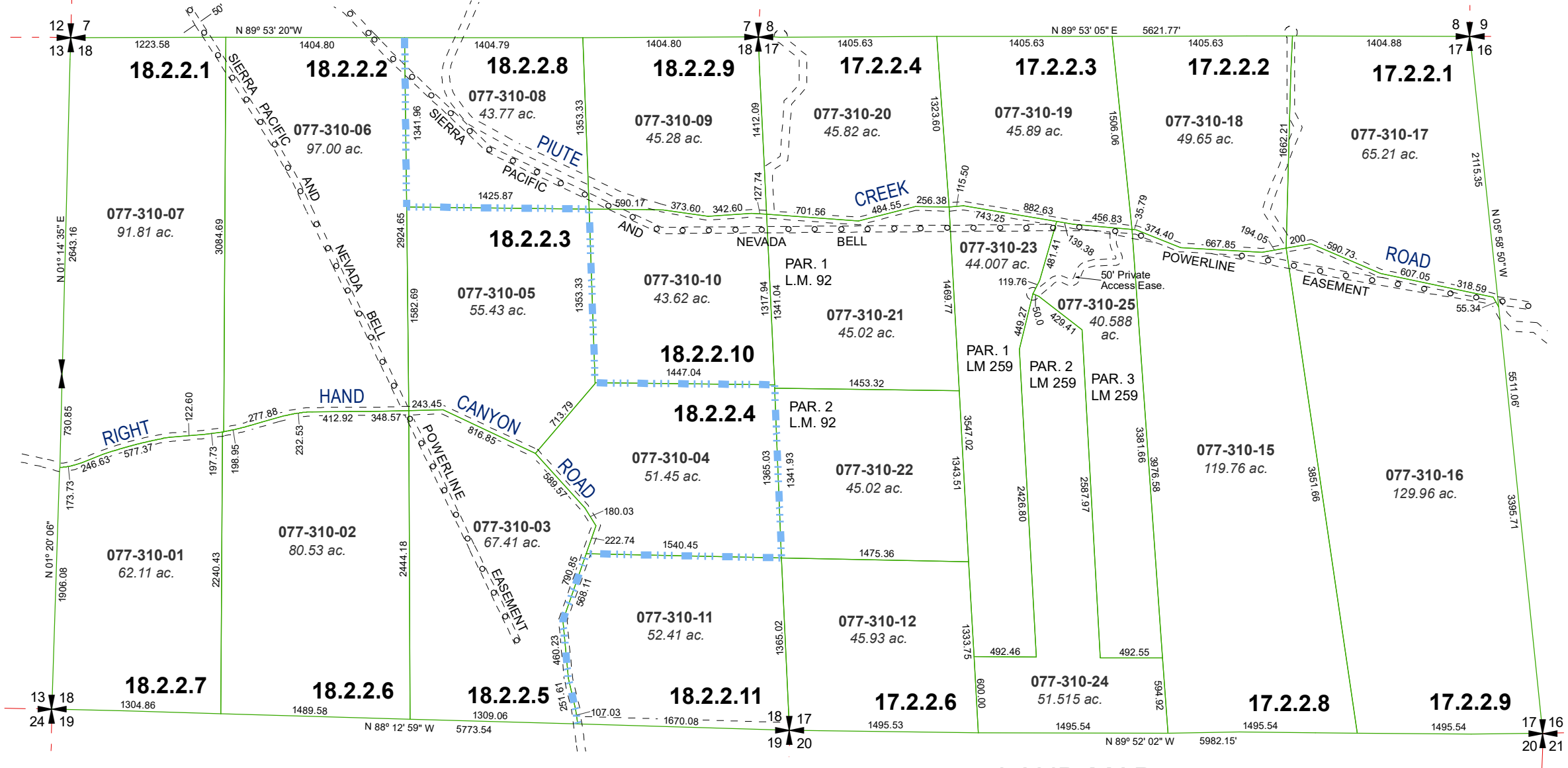


SECTIONS 17 & 18  
T22N - R22E

MAP OF DIVISION INTO LARGE PARCELS #26  
PALOMINO VALLEY - UNIT 13

RECORD OF SURVEY #1135



MAP OF DIVISION INTO  
LARGE PARCELS #16  
PALOMINO VALLEY  
UNIT 11

RECORD OF SURVEY #1022

LAND MAP  
#259

Assessor's Map Number

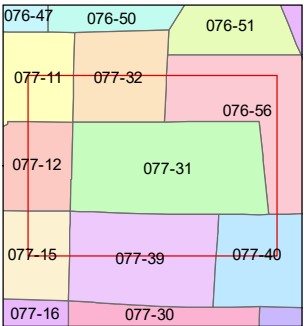
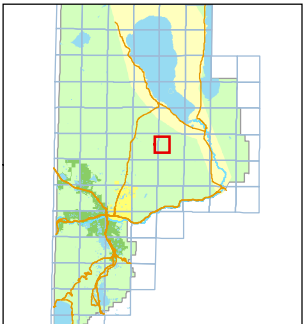
077-31

STATE OF NEVADA  
**WASHOE COUNTY**  
ASSESSOR'S OFFICE  
1001 East Ninth Street, Building D  
Reno, Nevada 89512  
(775) 328-2231



Feet  
0 250 500 750 1,000

1 inch = 1,000 feet



created by: TWT 4/25/2011

updated: JKF 3/04/19 JRA 11/20/24

KSB 5/08/25

area previously shown on map(s):

NOTE: This map was prepared for the use of the Washoe County Assessor for assessment and illustrative purposes only. It does not represent a survey of the premises. No liability is assumed as to the sufficiency or accuracy of the data delineated hereon.