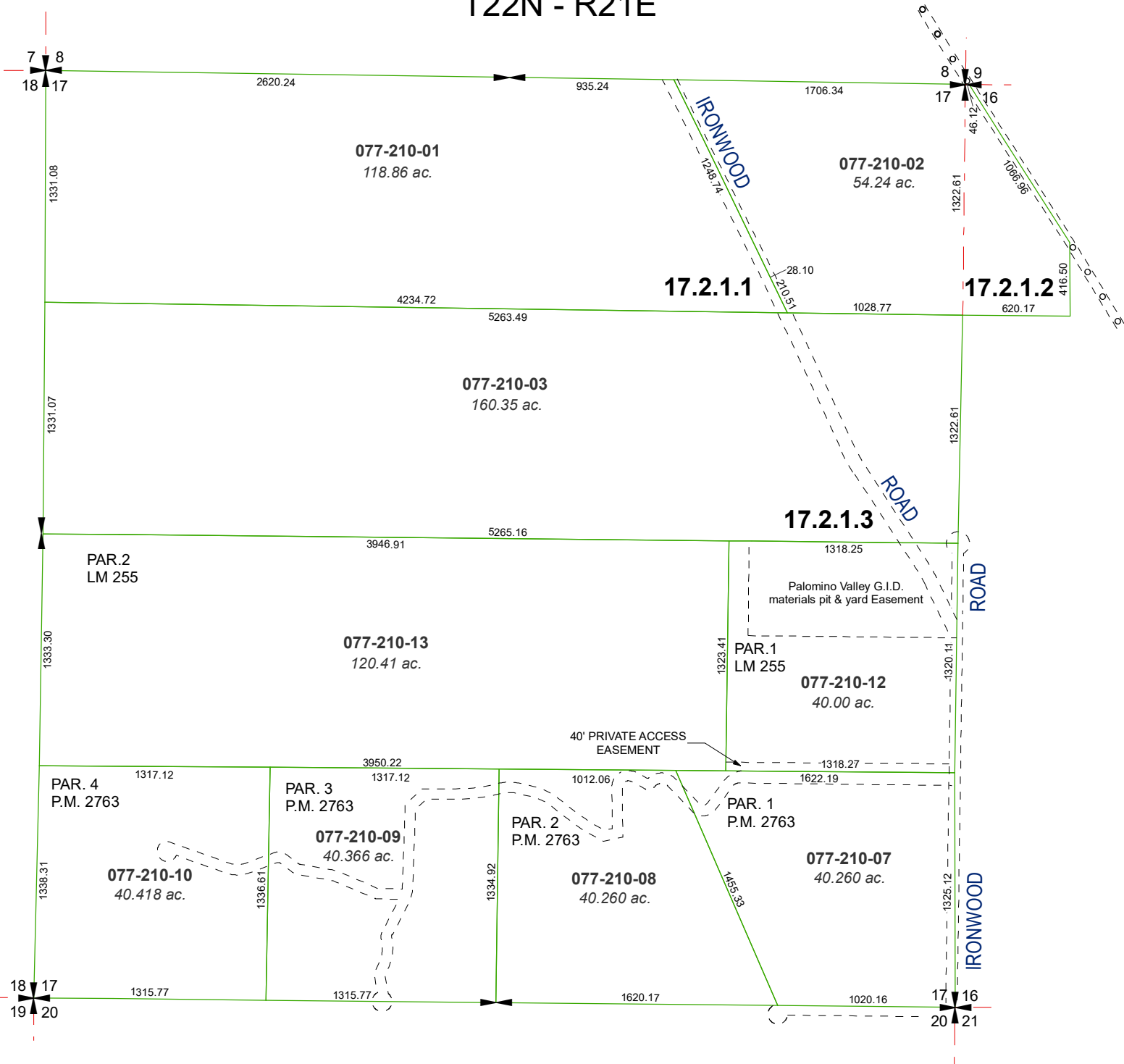


MAP OF DIVISION INTO LARGE PARCELS #8  
PALOMINO VALLEY - UNIT NO. 7

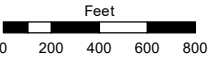
RECORD OF SURVEY #917 & #966  
SEC. 17 & POR. OF SEC. 16  
T22N - R21E



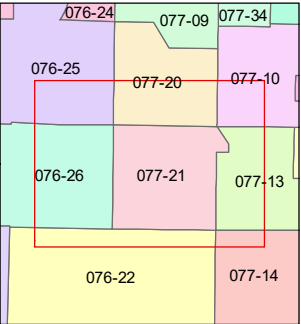
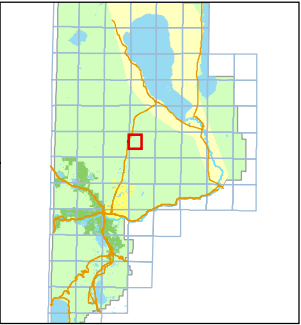
Assessor's Map Number

077-21

STATE OF NEVADA  
**WASHOE COUNTY**  
ASSESSOR'S OFFICE  
1001 East Ninth Street, Building D  
Reno, Nevada 89512  
(775) 328-2231



1 inch = 800 feet



created by: TWT 04/21/2011

updated: SR 06/05/23

area previously shown on map(s):

NOTE: This map was prepared for the use of the Washoe County Assessor for assessment and illustrative purposes only. It does not represent a survey of the premises. No liability is assumed as to the sufficiency or accuracy of the data delineated hereon.