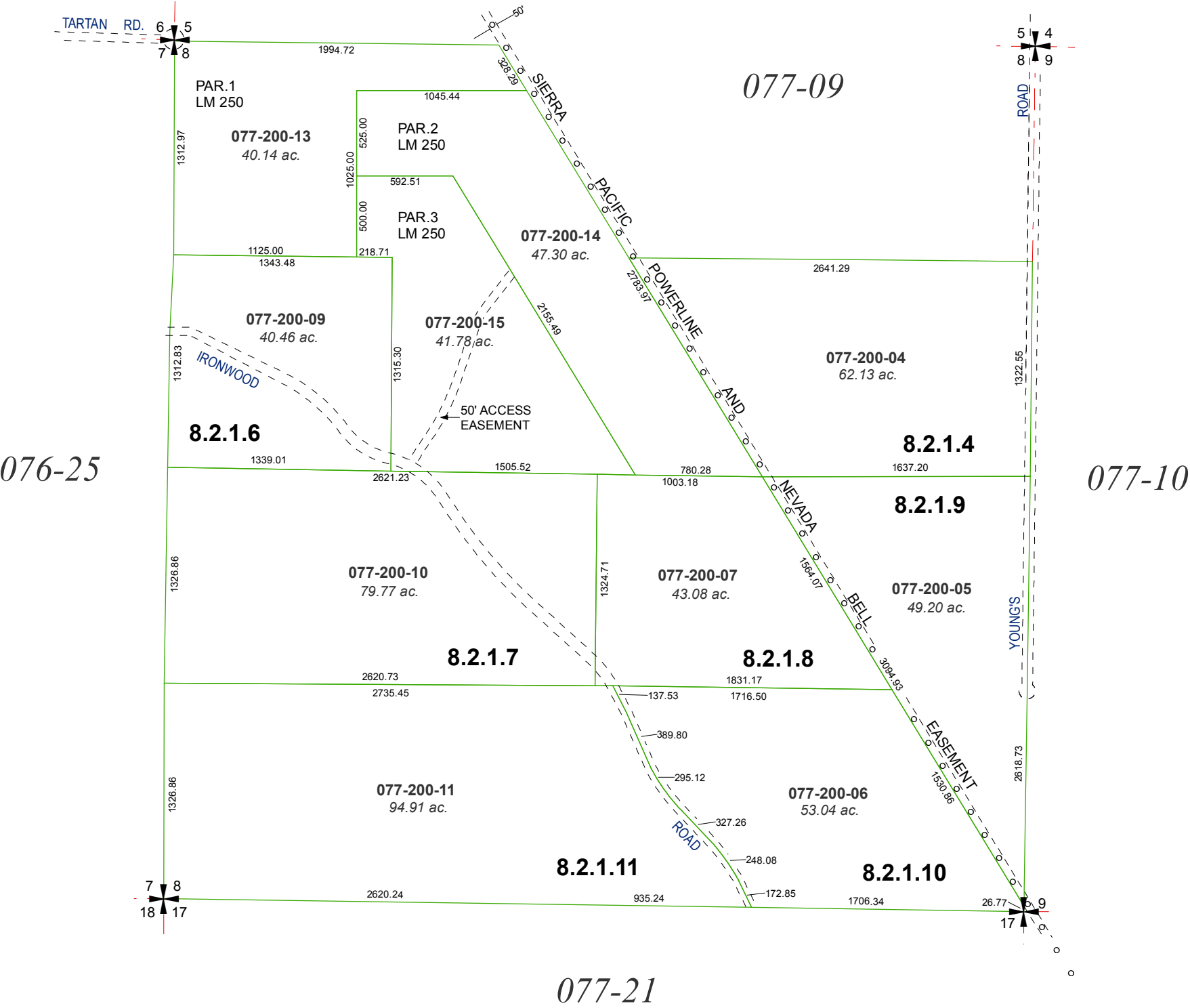


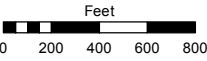
MAP OF DIVISION INTO LARGE PARCELS #8  
a.k.a. PALOMINO VALLEY UNIT NO. 7  
SECTION 8, T. 22 N. - R. 21 E.  
R.S. 965



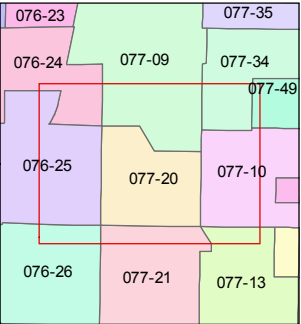
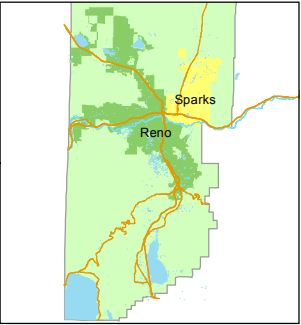
Assessor's Map Number

077-20

STATE OF NEVADA  
**WASHOE COUNTY**  
**ASSESSOR'S OFFICE**  
1001 East Ninth Street, Building D  
Reno, Nevada 89512  
(775) 328-2231



1 inch = 800 feet



created by: CFB 02/09/2011

updated: SR 1/15/19

area previously shown on map(s):

NOTE: This map was prepared for the use of the Washoe County Assessor for assessment and illustrative purposes only. It does not represent a survey of the premises. No liability is assumed as to the sufficiency or accuracy of the data delineated hereon.