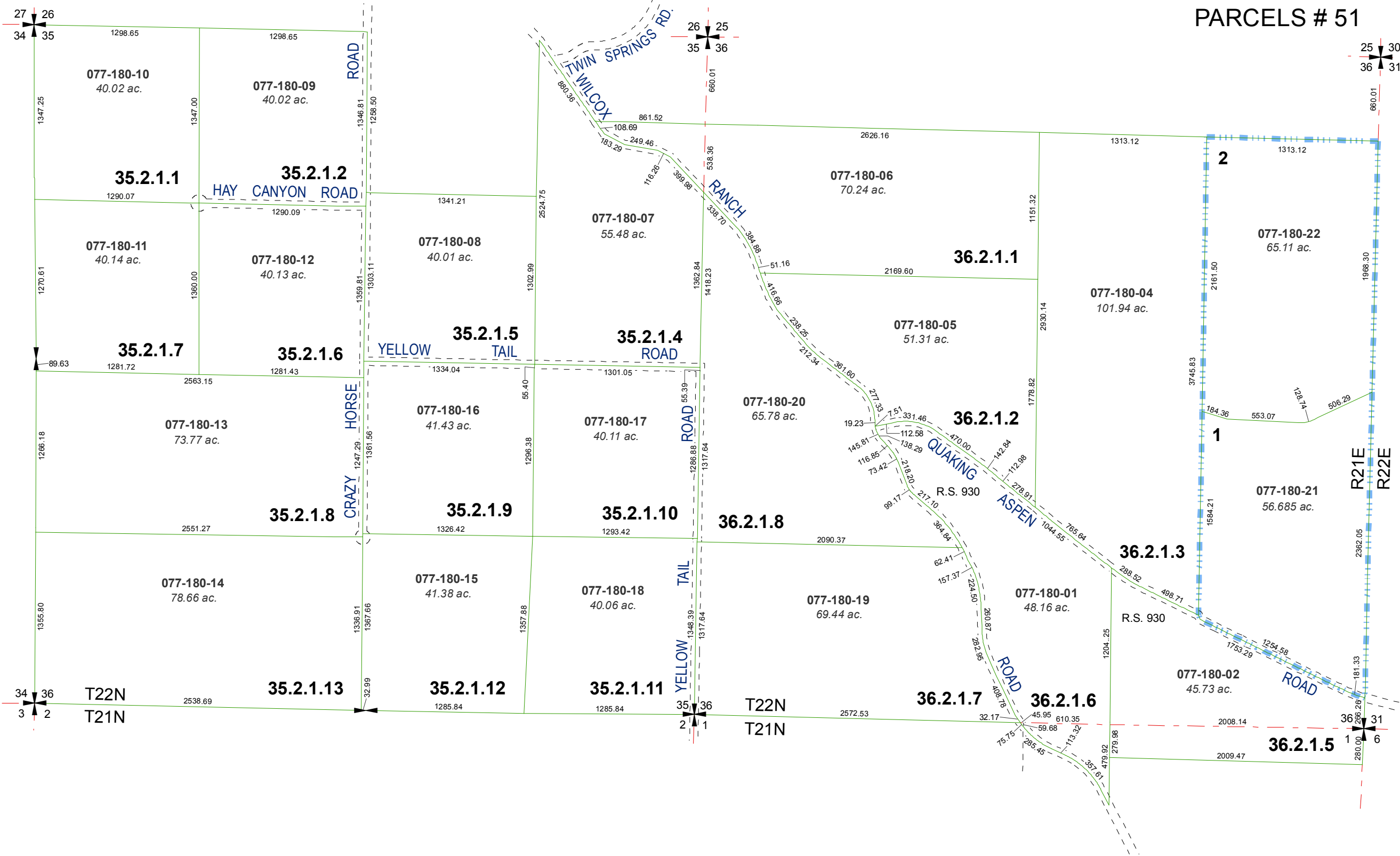


MAP OF DIVISION INTO LARGE PARCELS # 1  
PALOMINO VALLEY - UNIT NO. 1

RECORD OF SURVEY #922  
POR'S. OF SEC'S. 35 & 36  
T22N - R21E

MAP OF DIVISION  
INTO LARGE  
PARCELS # 51



Assessor's Map Number

077-18

STATE OF NEVADA

WASHOE COUNTY  
ASSESSOR'S OFFICE

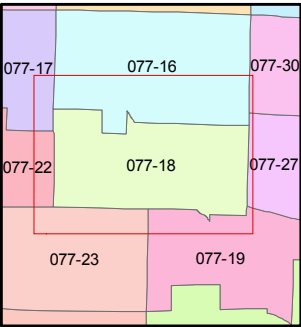
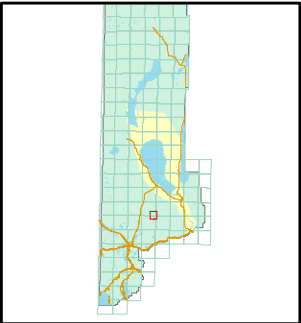
Joshua G. Wilson, Assessor

1001 East Ninth Street  
Building D  
Reno, Nevada 89512  
(775) 328-2231



Feet  
0 190 380 570 760

1 inch = 800 feet



created by: TWT 4/26/2011

last updated: \_\_\_\_\_

area previously shown on map(s)  
\_\_\_\_\_

NOTE: This map was prepared for the use of the Washoe County Assessor for assessment and illustrative purposes only. It does not represent a survey of the premises. No liability is assumed as to the sufficiency or accuracy of the data delineated hereon.