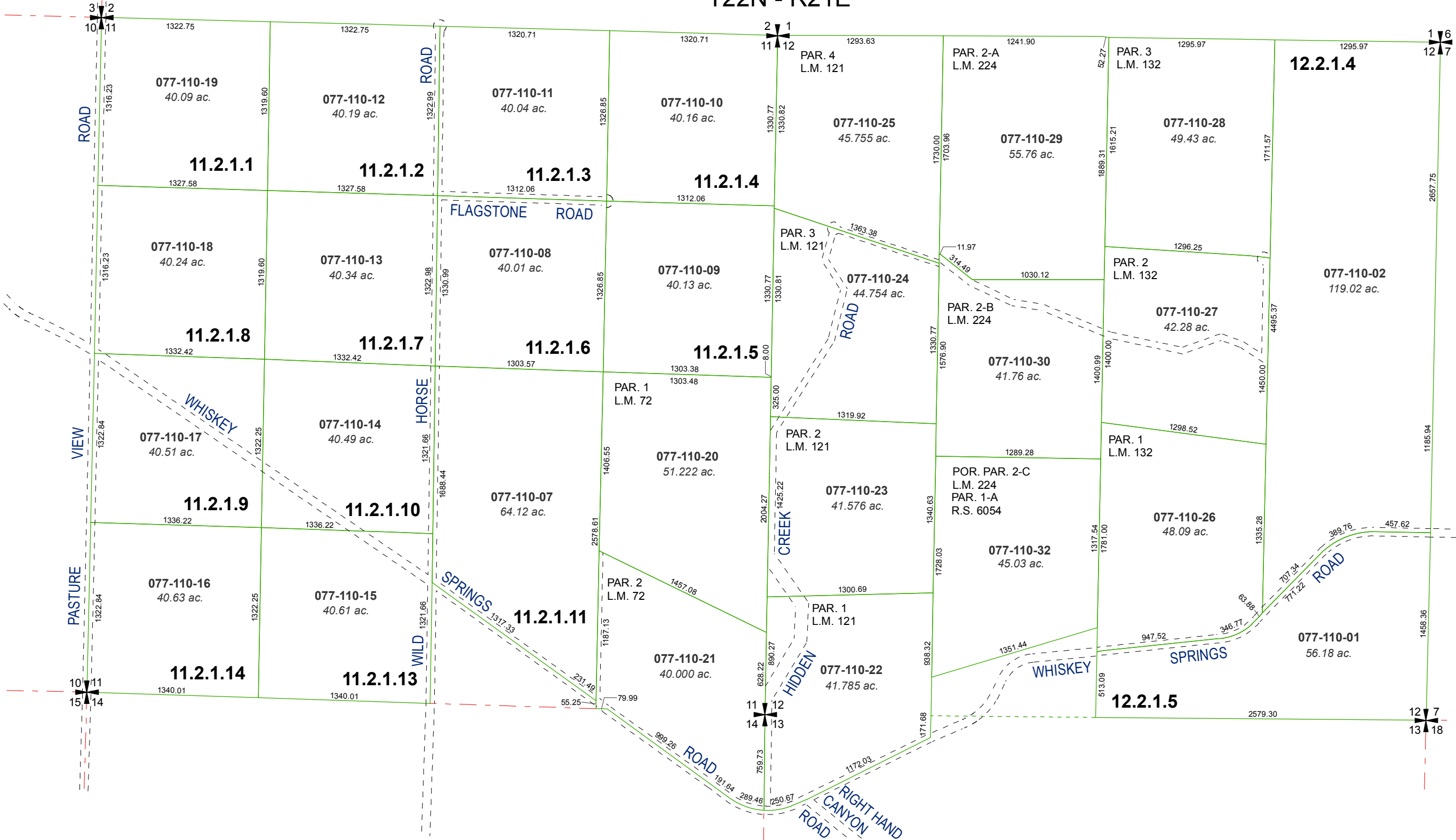


MAP OF DIVISION INTO LARGE PARCELS #1
PALOMINO VALLEY UNIT NO. 1

RECORD OF SURVEY #915 & #916
SECTION 12 & PORTIONS
OF SECTIONS 11, 13 & 14
T22N - R21E



Assessor's Map Number

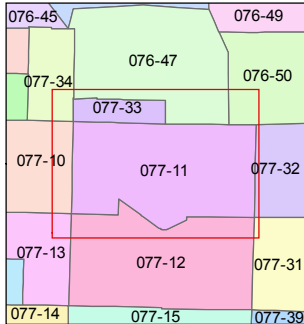
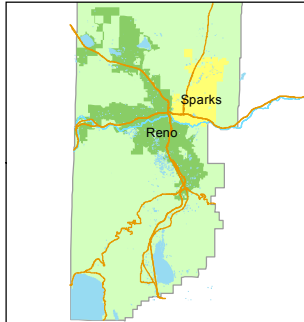
077-11

STATE OF NEVADA
WASHOE COUNTY
ASSESSOR'S OFFICE
1001 East Ninth Street, Building D
Reno, Nevada 89512
(775) 328-2231



Feet
0 200 400 600 800

1 inch = 800 feet



created by: TWT 04/22/2011

updated: EMG 9/25/14 JKF 6/27/19

area previously shown on map(s):

NOTE: This map was prepared for the use of the Washoe County Assessor for assessment and illustrative purposes only. It does not represent a survey of the premises. No liability is assumed as to the sufficiency or accuracy of the data delineated hereon.