

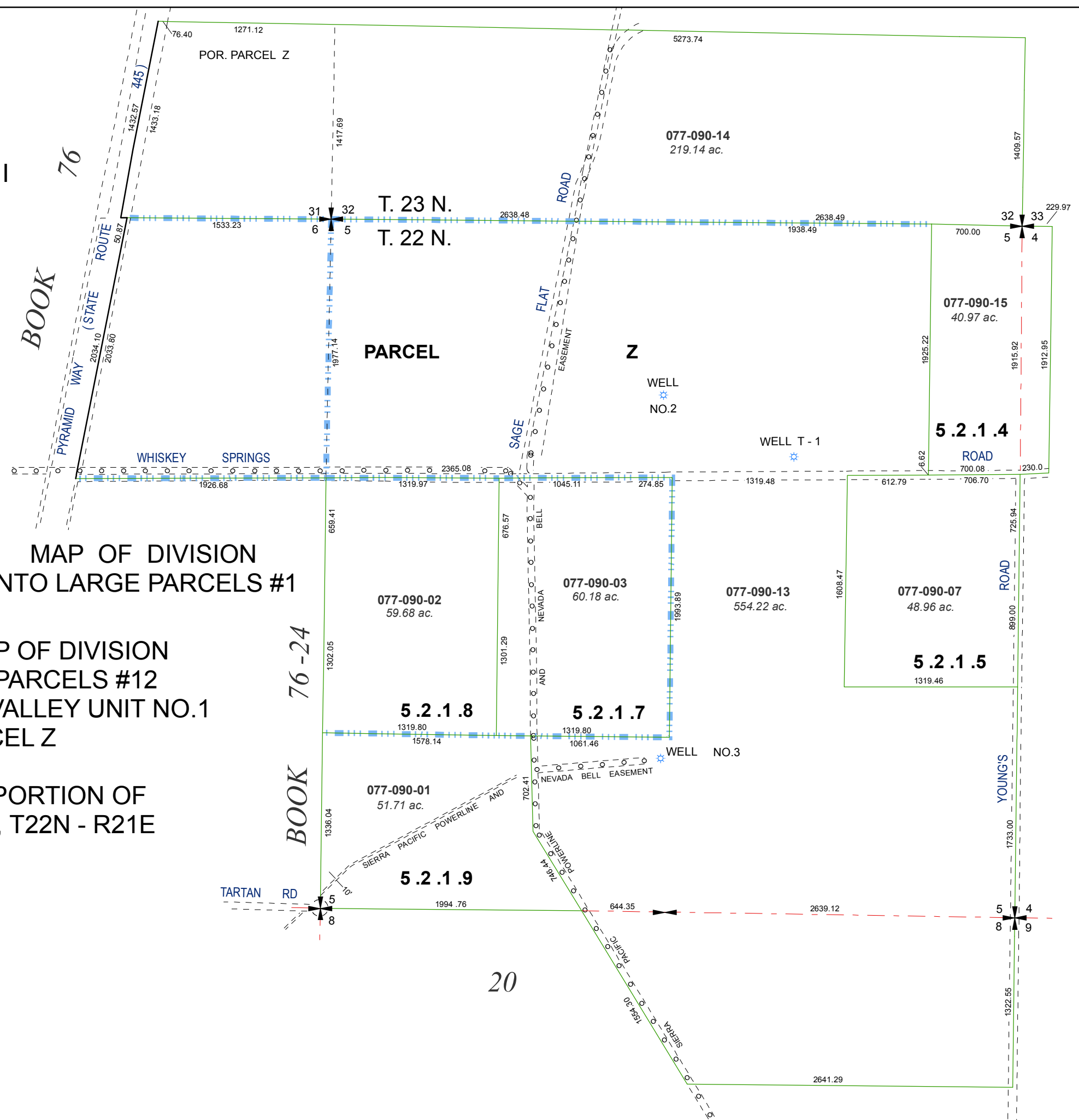
MAP OF DIVISION
INTO LARGE PARCELS # I I
a.k.a. PALOMINO VALLEY
UNIT NO. 9
SEC. 5 AND POR. SEC. 6
T22N - R21E
POR. SEC. 31 AND 32
T23N - R21E

R.S. 913, 982, 1010

MAP OF DIVISION
INTO LARGE PARCELS #1

AMENDED MAP OF DIVISION
INTO LARGE PARCELS #12
a.k.a. PALOMINO VALLEY UNIT NO.1
PARCEL Z

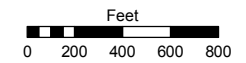
SEC. 5 AND PORTION OF
SEC. 4 AND 8, T22N - R21E



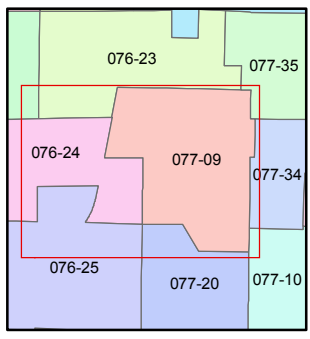
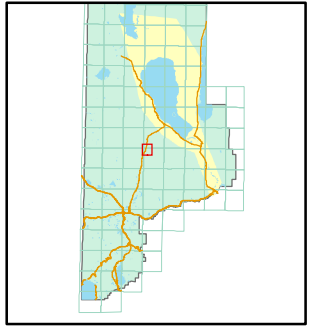
Assessor's Map Number
077-09

STATE OF NEVADA
WASHOE COUNTY
ASSESSOR'S OFFICE
Joshua G. Wilson, Assessor

1001 East Ninth Street
Building D
Reno, Nevada 89512
(775) 328-2231



1 inch = 800 feet



created by: CFB 02/07/2011

last updated: _____

area previously shown on map(s)

NOTE: This map was prepared for the use of the Washoe County Assessor for assessment and illustrative purposes only. It does not represent a survey of the premises. No liability is assumed as to the sufficiency or accuracy of the data delineated hereon.