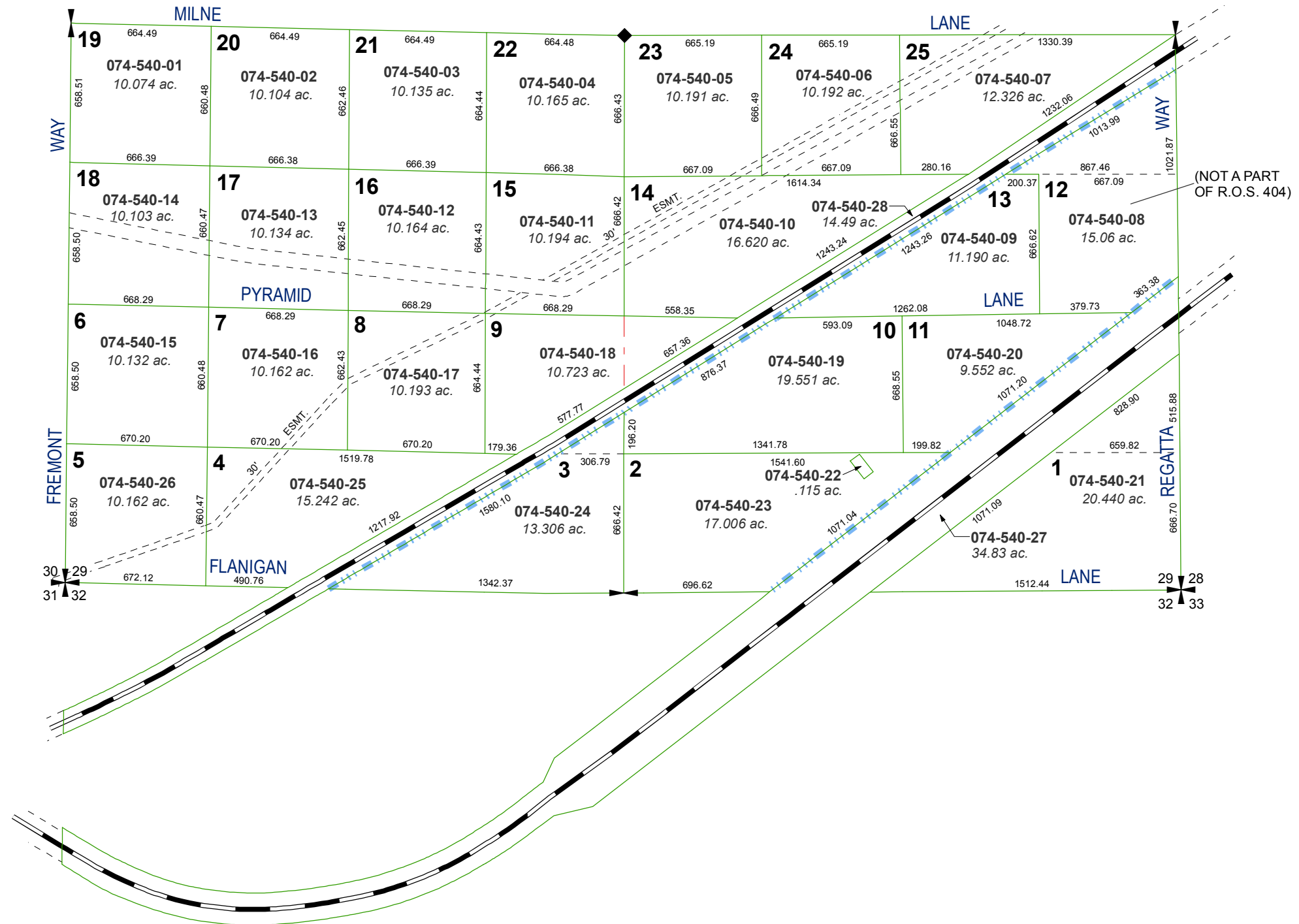


PYRAMID LAKE RANCHES UNIT NO. 3 (UNOFFICIAL)

RECORD OF SURVEY #404
SOUTH 1/2 OF SEC. 29
T27N - R19E



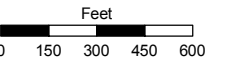
Assessor's Map Number

074-54

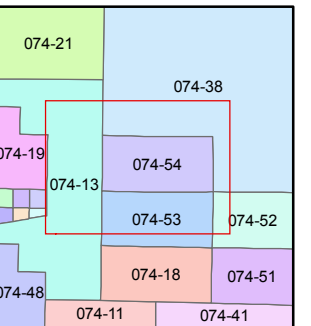
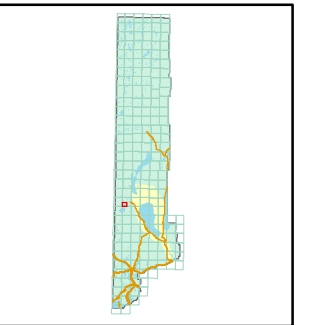
STATE OF NEVADA
WASHOE COUNTY
ASSESSOR'S OFFICE

Joshua G. Wilson, Assessor

1001 East Ninth Street
Building D
Reno, Nevada 89512
(775) 328-2231



1 inch = 600 feet



created by: TWT 2/24/2011

last updated: _____

area previously shown on map(s)

NOTE: This map was prepared for the use of the Washoe County Assessor for assessment and illustrative purposes only. It does not represent a survey of the premises. No liability is assumed as to the sufficiency or accuracy of the data delineated hereon.