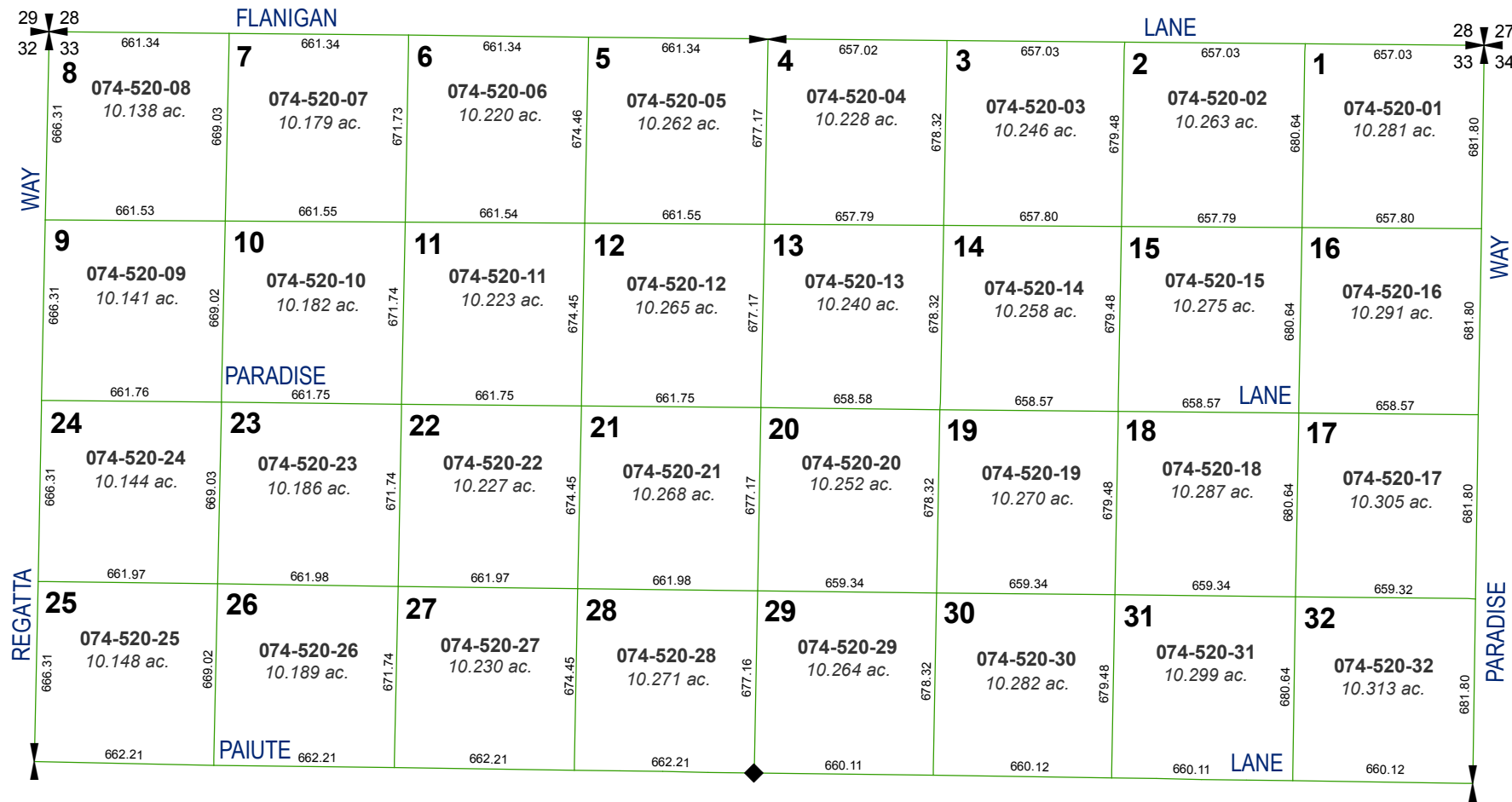


PYRAMID LAKE RANCHES  
UNIT NO. 3  
(UNOFFICIAL)

RECORD OF SURVEY #404  
NORTH 1/2 OF SEC. 33  
T27N - R19E



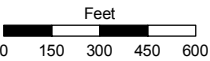
Assessor's Map Number

074-52

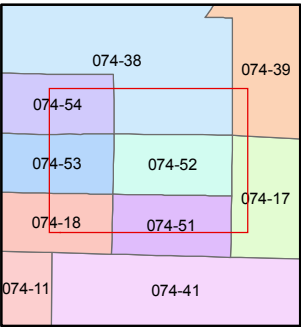
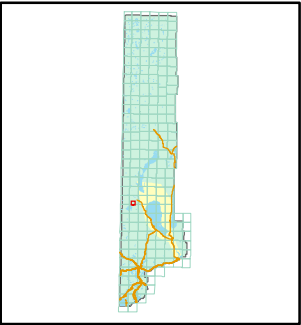
STATE OF NEVADA  
WASHOE COUNTY  
ASSESSOR'S OFFICE

Joshua G. Wilson, Assessor

1001 East Ninth Street  
Building D  
Reno, Nevada 89512  
(775) 328-2231



1 inch = 600 feet



created by: TWT 2/24/2011

last updated: \_\_\_\_\_

area previously shown on map(s)

NOTE: This map was prepared for the use of the Washoe County Assessor for assessment and illustrative purposes only. It does not represent a survey of the premises. No liability is assumed as to the sufficiency or accuracy of the data delineated hereon.