

PORTIONS OF SECTIONS 23, 26 & 27  
T16N - R19E

055-20

MILL STATION  
RANCH ROAD

BRYAN CANYON ROAD

PONDEROSA POINT  
DRIVE

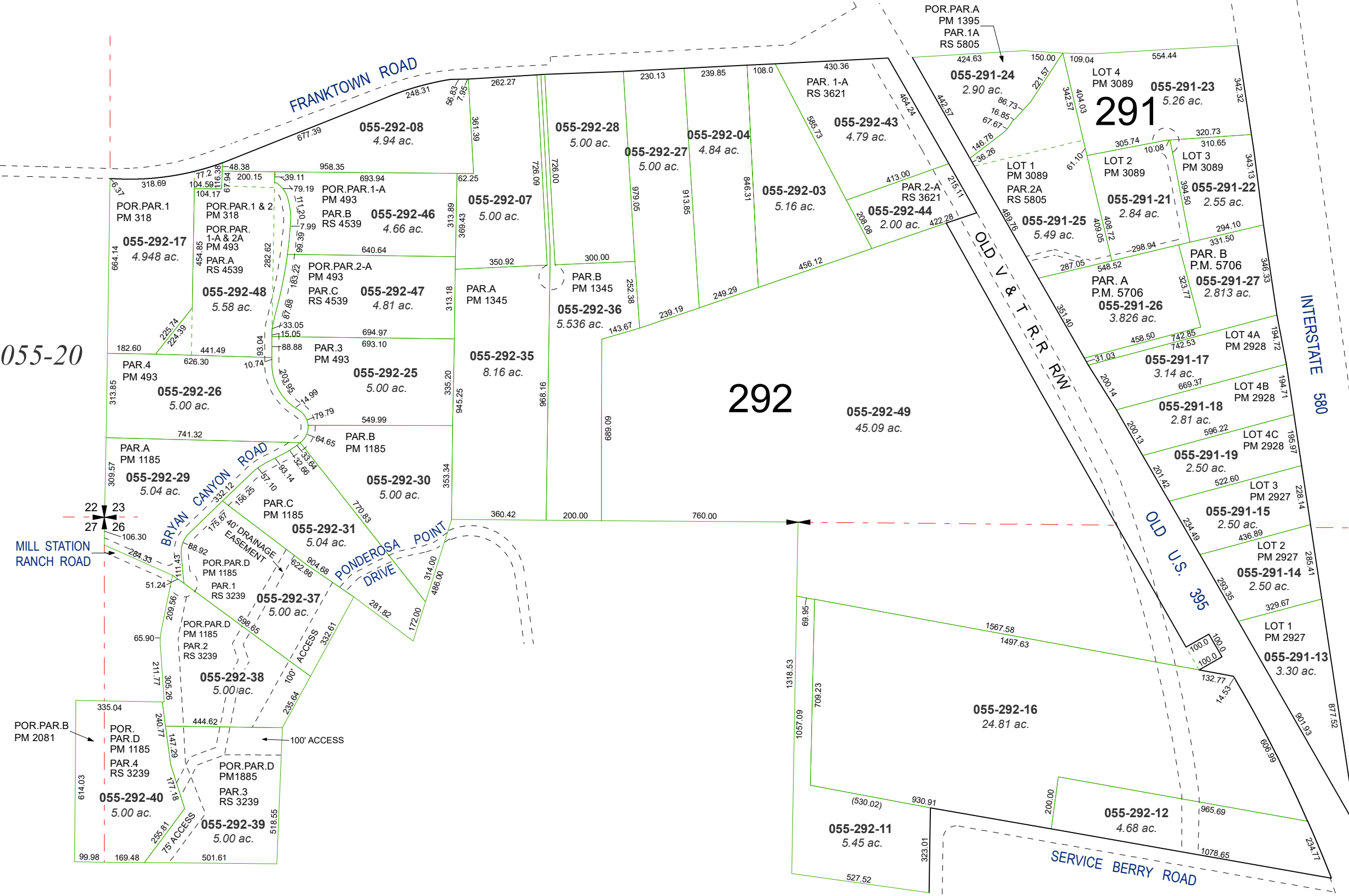
LANDING LANE

SERVICE BERRY ROAD

INTERSTATE 580

291

292



Assessor's Map Number

055-29

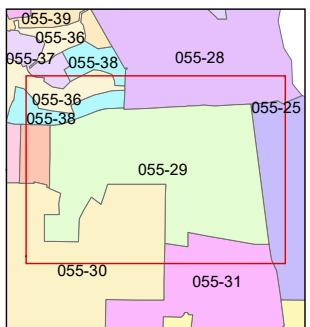
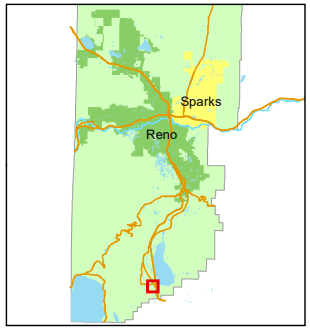
STATE OF NEVADA  
**WASHOE COUNTY**  
ASSESSOR'S OFFICE

1001 East Ninth Street, Building D  
Reno, Nevada 89512  
(775) 328-2231



Feet  
0 100 200 300 400

1 inch = 400 feet



created by: TWT 12/2/2009

updated: SR 3/6/17 SR 7/26/17

KSB 6/13/23 JKF 1/26/24

area previously shown on map(s):  
055-25

NOTE: This map was prepared for the use of the Washoe County Assessor for assessment and illustrative purposes only. It does not represent a survey of the premises. No liability is assumed as to the sufficiency or accuracy of the data delineated hereon.