

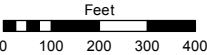
PORTION OF SECTIONS 35 & 36  
T16N - R19E

Assessor's Map Number

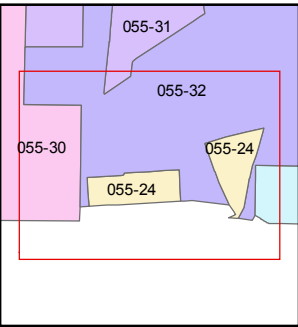
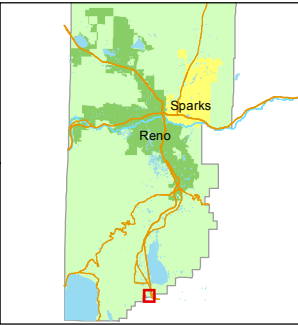
055-24

STATE OF NEVADA  
**WASHOE COUNTY**  
**ASSESSOR'S OFFICE**  
Michael E. Clark, Assessor

1001 East Ninth Street  
Building D  
Reno, Nevada 89512  
(775) 328-2231



1 inch = 400 feet



created by: SR 12/08/2016

last updated: \_\_\_\_\_

area previously shown on map(s)

055-32

NOTE: This map was prepared for the use of the Washoe County Assessor for assessment and illustrative purposes only. It does not represent a survey of the premises. No liability is assumed as to the sufficiency or accuracy of the data delineated hereon.

26  
35

26 25  
35 36

35 36

(ABANDONED V & T RAILROAD RIGHT-OF-WAY)

INTERSTATE 580

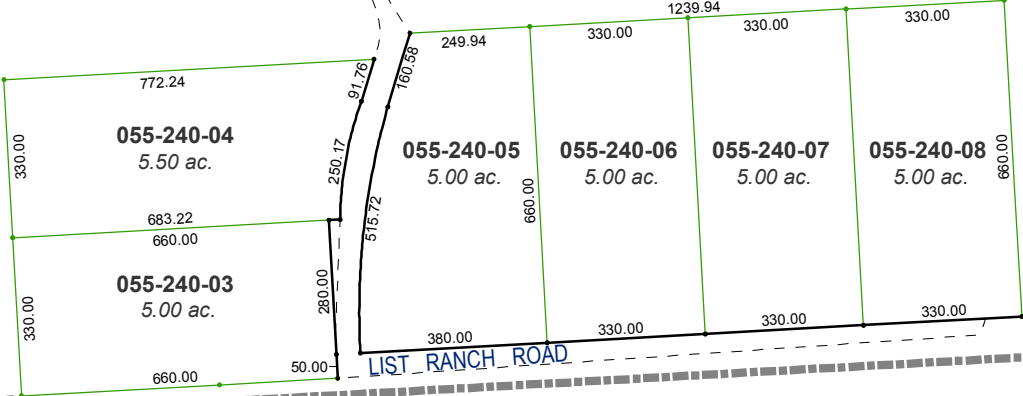
EASTLAKE BOULEVARD

LIST RANCH ROAD

DUCK HILL ROAD

LIST RANCH ROAD

Carson City



055-240-01  
0.363 ac.

