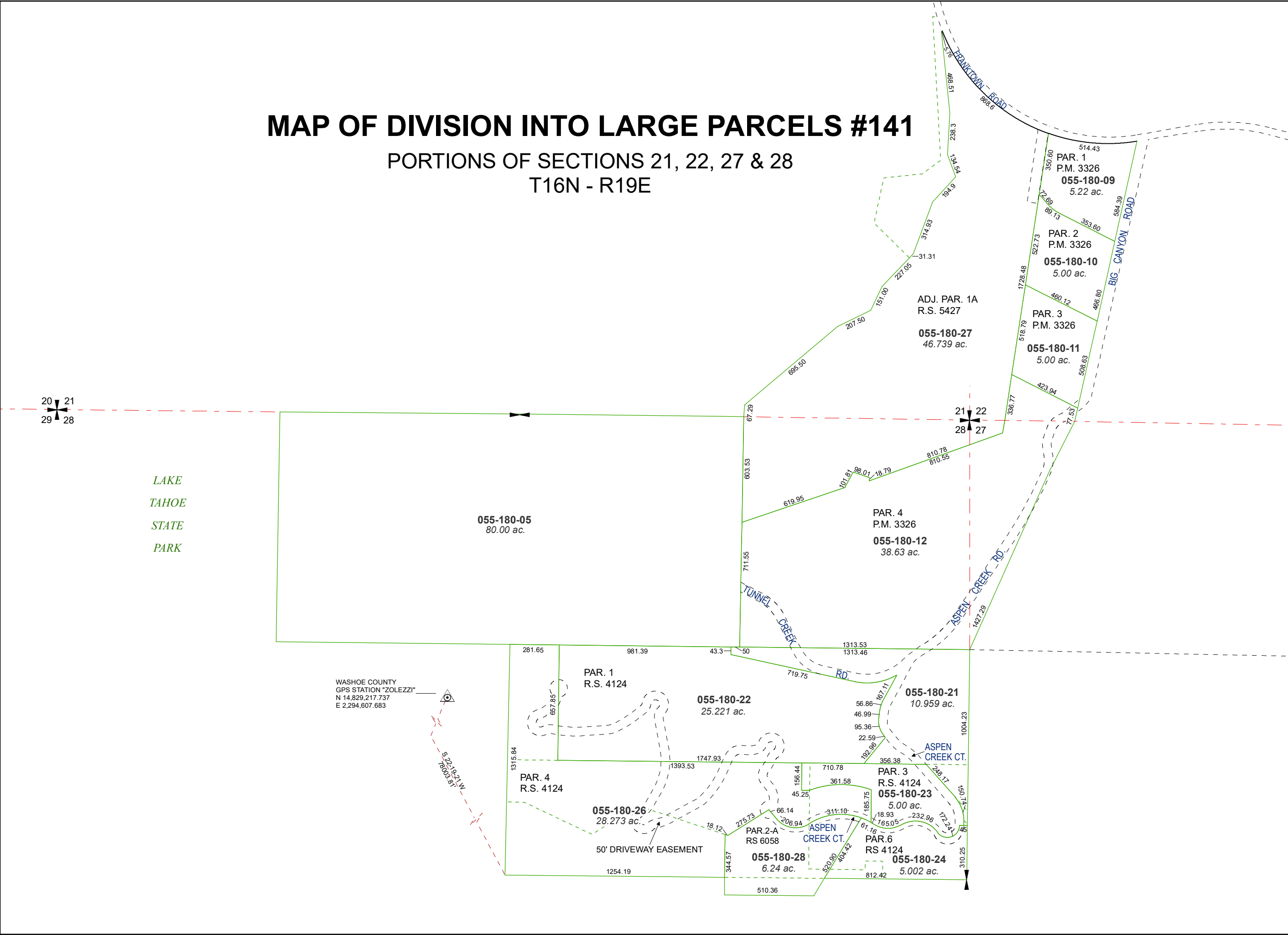


MAP OF DIVISION INTO LARGE PARCELS #141
PORTIONS OF SECTIONS 21, 22, 27 & 28
T16N - R19E



Assessor's Map Number

055-18

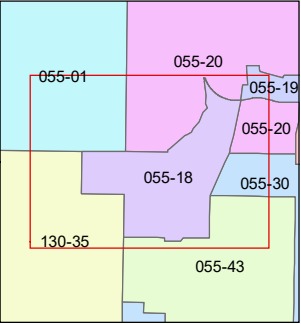
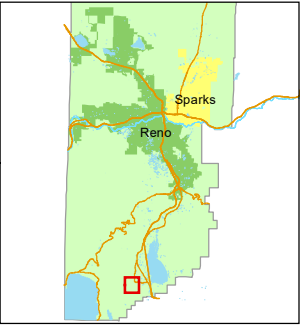
STATE OF NEVADA
WASHOE COUNTY
ASSESSOR'S OFFICE

1001 East Ninth Street, Building D
Reno, Nevada 89512
(775) 328-2231



Feet
0 125 250 375 500

1 inch = 500 feet



created by: TWT 09/25/2009

updated: NLH 06/11/12 JKF 03/01/19

SR 07/05/19

area previously shown on map(s):

055-43

NOTE: This map was prepared for the use of the Washoe County Assessor for assessment and illustrative purposes only. It does not represent a survey of the premises. No liability is assumed as to the sufficiency or accuracy of the data delineated hereon.