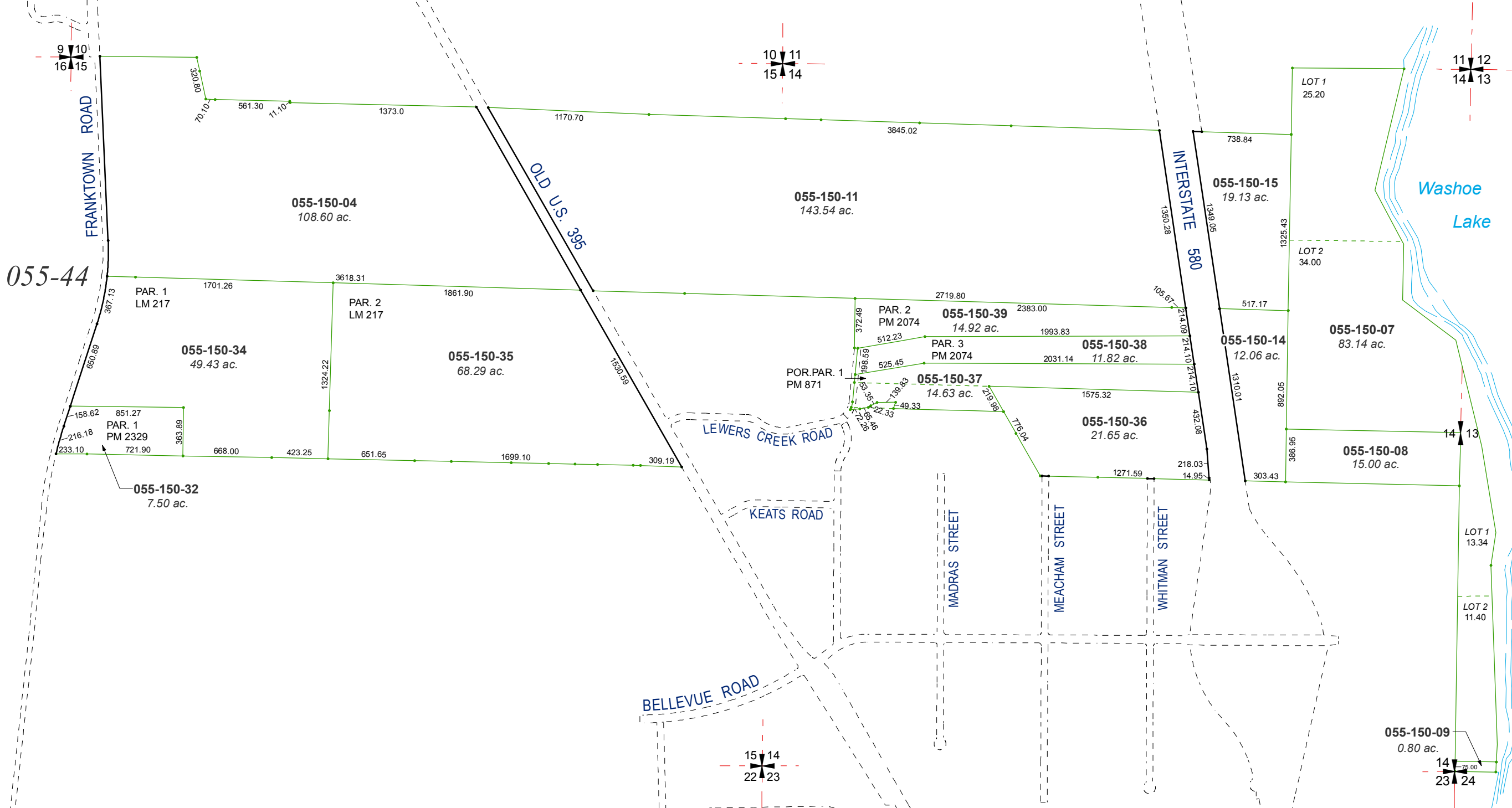


PORTION OF SECTIONS 13, 14, 15 & 16
T16N - R19E

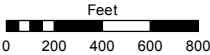


Assessor's Map Number

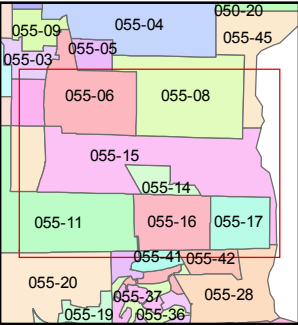
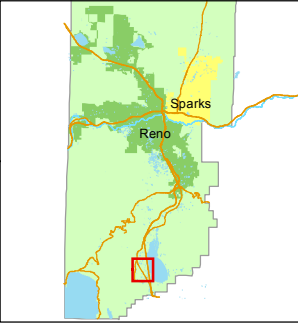
055-15

STATE OF NEVADA
WASHOE COUNTY
ASSESSOR'S OFFICE
Michael E. Clark, Assessor

1001 East Ninth Street
Building D
Reno, Nevada 89512
(775) 328-2231



1 inch = 800 feet



created by: CFB 02/06/2014

last updated: SR 02/10/17

area previously shown on map(s)

055-14

NOTE: This map was prepared for the use of the Washoe County Assessor for assessment and illustrative purposes only. It does not represent a survey of the premises. No liability is assumed as to the sufficiency or accuracy of the data delineated hereon.