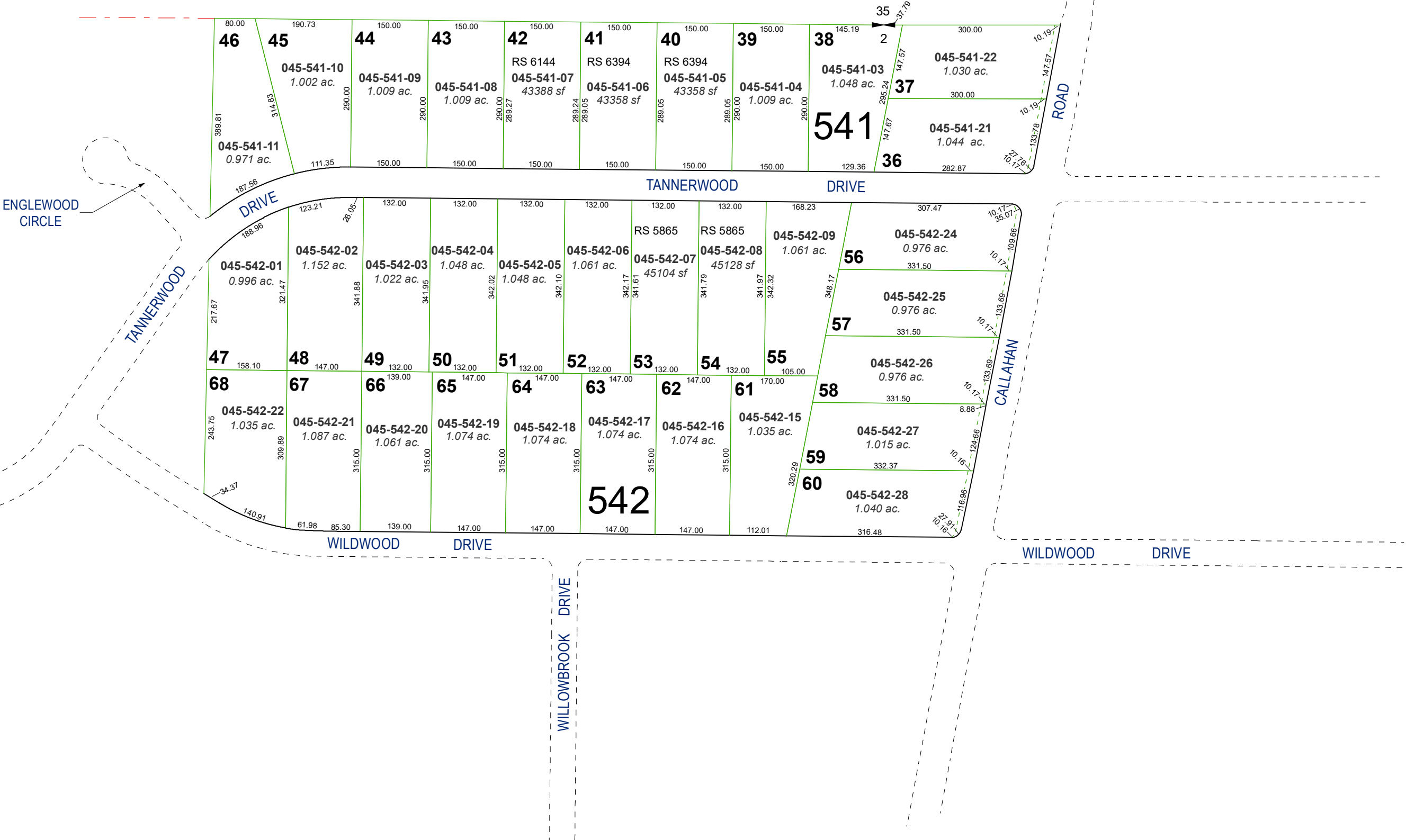


(#1338)
GALENA TERRACE ESTATES
UNIT NO. 1

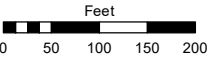
PORTION OF N½ SECTION 2
T17N - R19E



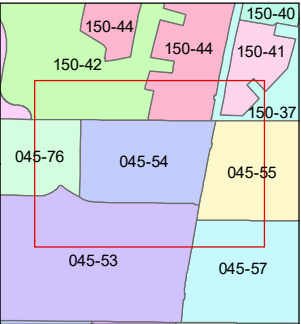
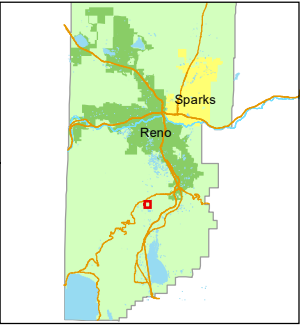
Assessor's Map Number

045-54

STATE OF NEVADA
WASHOE COUNTY
ASSESSOR'S OFFICE
1001 East Ninth Street, Building D
Reno, Nevada 89512
(775) 328-2231



1 inch = 200 feet



created by: SR 08/11/2023

updated:

area previously shown on map(s):

NOTE: This map was prepared for the use of the Washoe County Assessor for assessment and illustrative purposes only. It does not represent a survey of the premises. No liability is assumed as to the sufficiency or accuracy of the data delineated hereon.