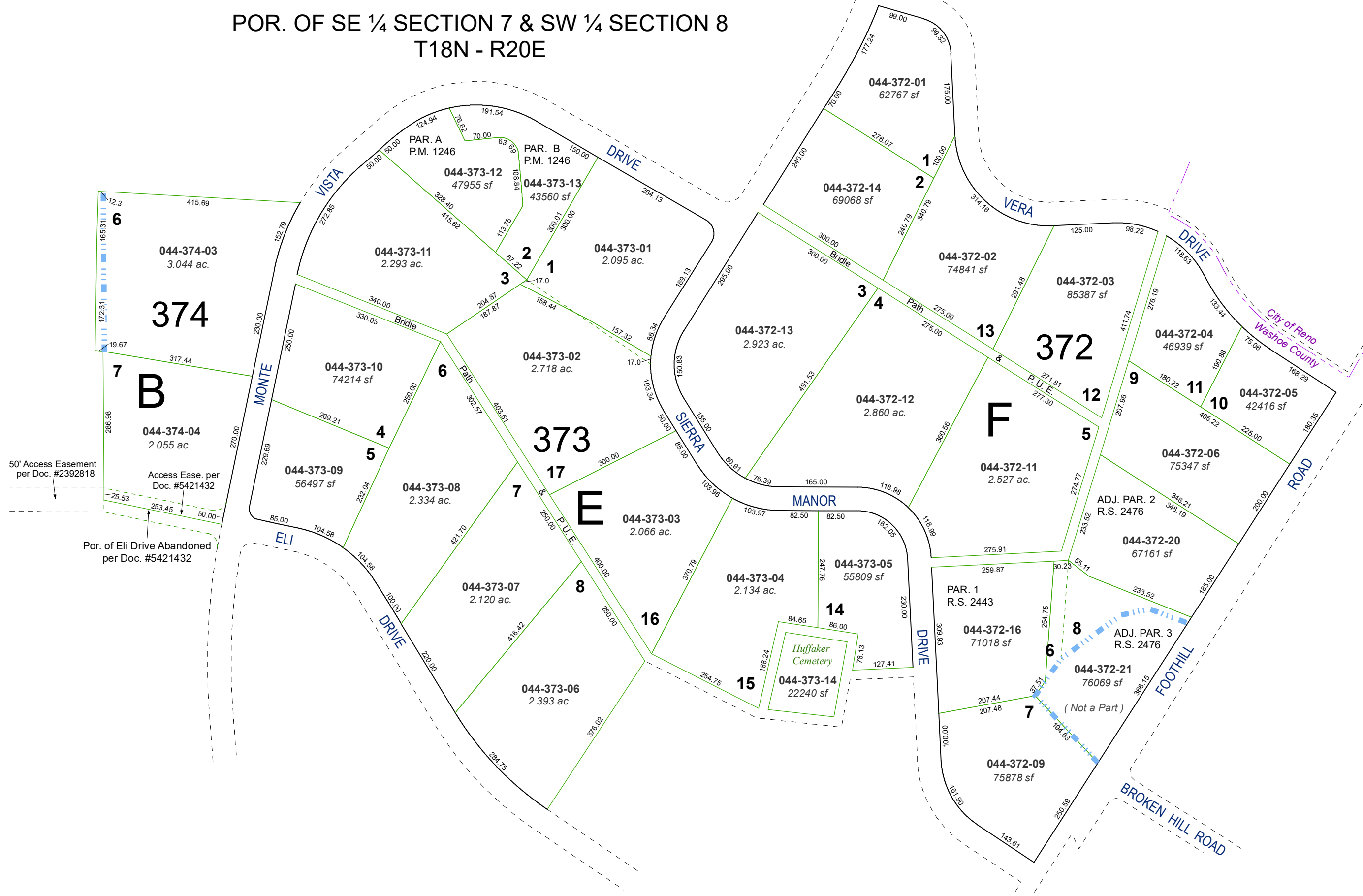


(#448)
AMENDED SIERRA MANOR SUBDIVISION

POR. OF SE ¼ SECTION 7 & SW ¼ SECTION 8
T18N - R20E



Assessor's Map Number

044-37

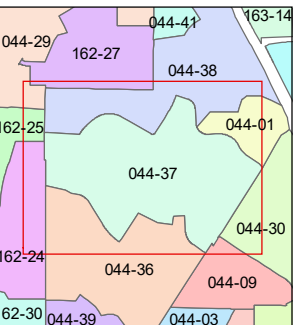
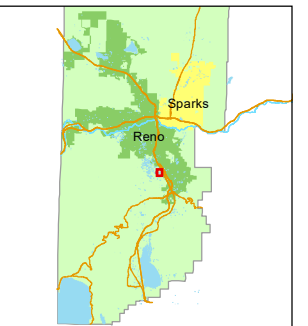
STATE OF NEVADA
WASHOE COUNTY
ASSESSOR'S OFFICE

1001 East Ninth Street, Building D
Reno, Nevada 89512
(775) 328-2231



Feet
0 50 100 150 200

1 inch = 200 feet



created by: NLH 11/01/2011

updated: KSB 6/10/24

area previously shown on map(s):

040-33

NOTE: This map was prepared for the use of the Washoe County Assessor for assessment and illustrative purposes only. It does not represent a survey of the premises. No liability is assumed as to the sufficiency or accuracy of the data delineated hereon.