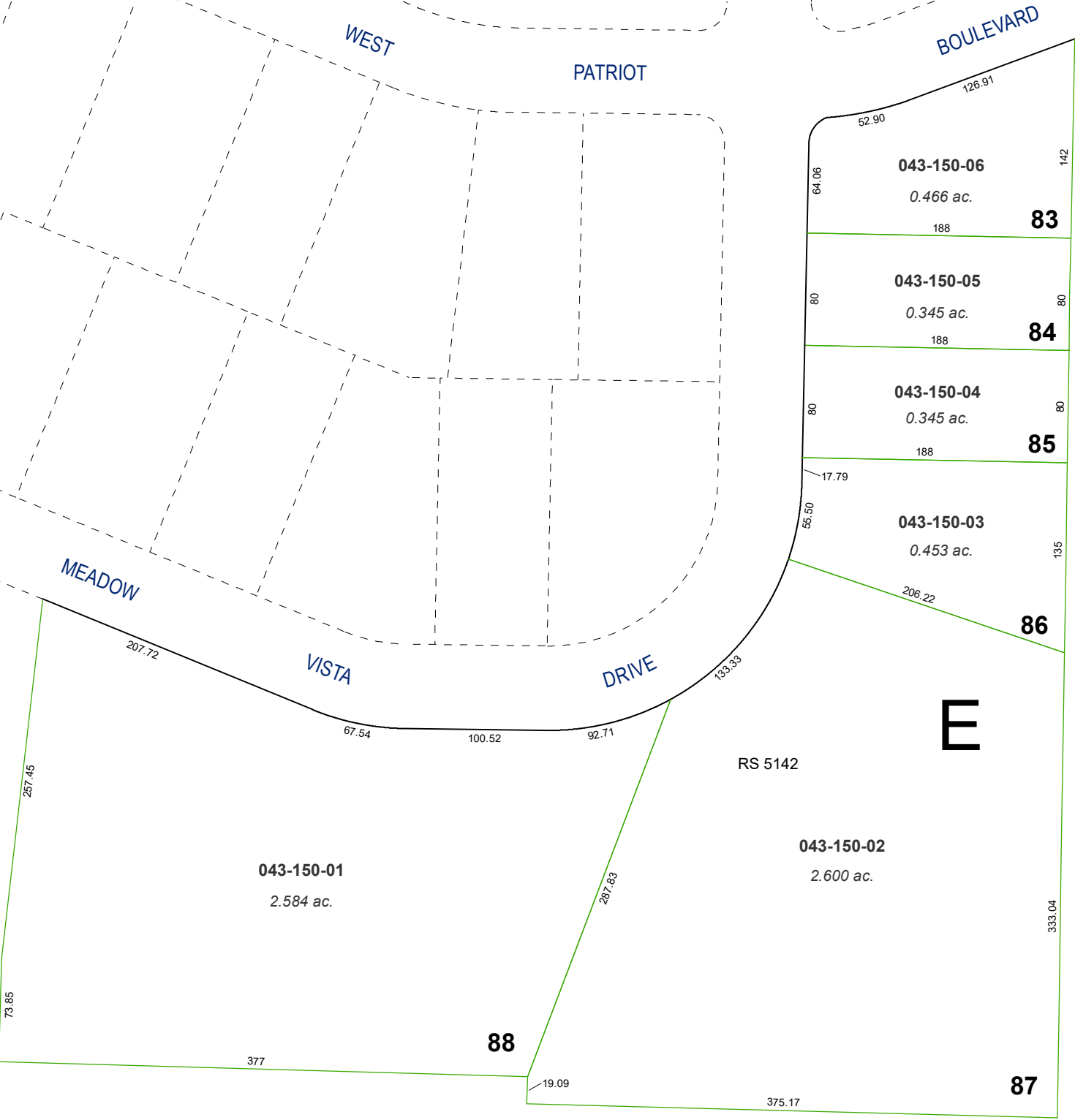


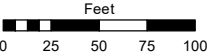
(#2112)  
**MEADOW CREEK ESTATES UNIT NO. 2-B**  
PORTION SW ¼ SECTION 6  
T18N - R20E



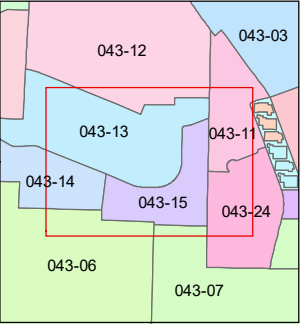
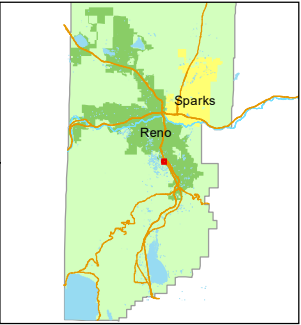
Assessor's Map Number

**043-15**

STATE OF NEVADA  
**WASHOE COUNTY**  
**ASSESSOR'S OFFICE**  
1001 East Ninth Street, Building D  
Reno, Nevada 89512  
(775) 328-2231



1 inch = 100 feet



created by: JRA 7/22/2021

updated: \_\_\_\_\_

area previously shown on map(s):

043-04

NOTE: This map was prepared for the use of the Washoe County Assessor for assessment and illustrative purposes only. It does not represent a survey of the premises. No liability is assumed as to the sufficiency or accuracy of the data delineated hereon.