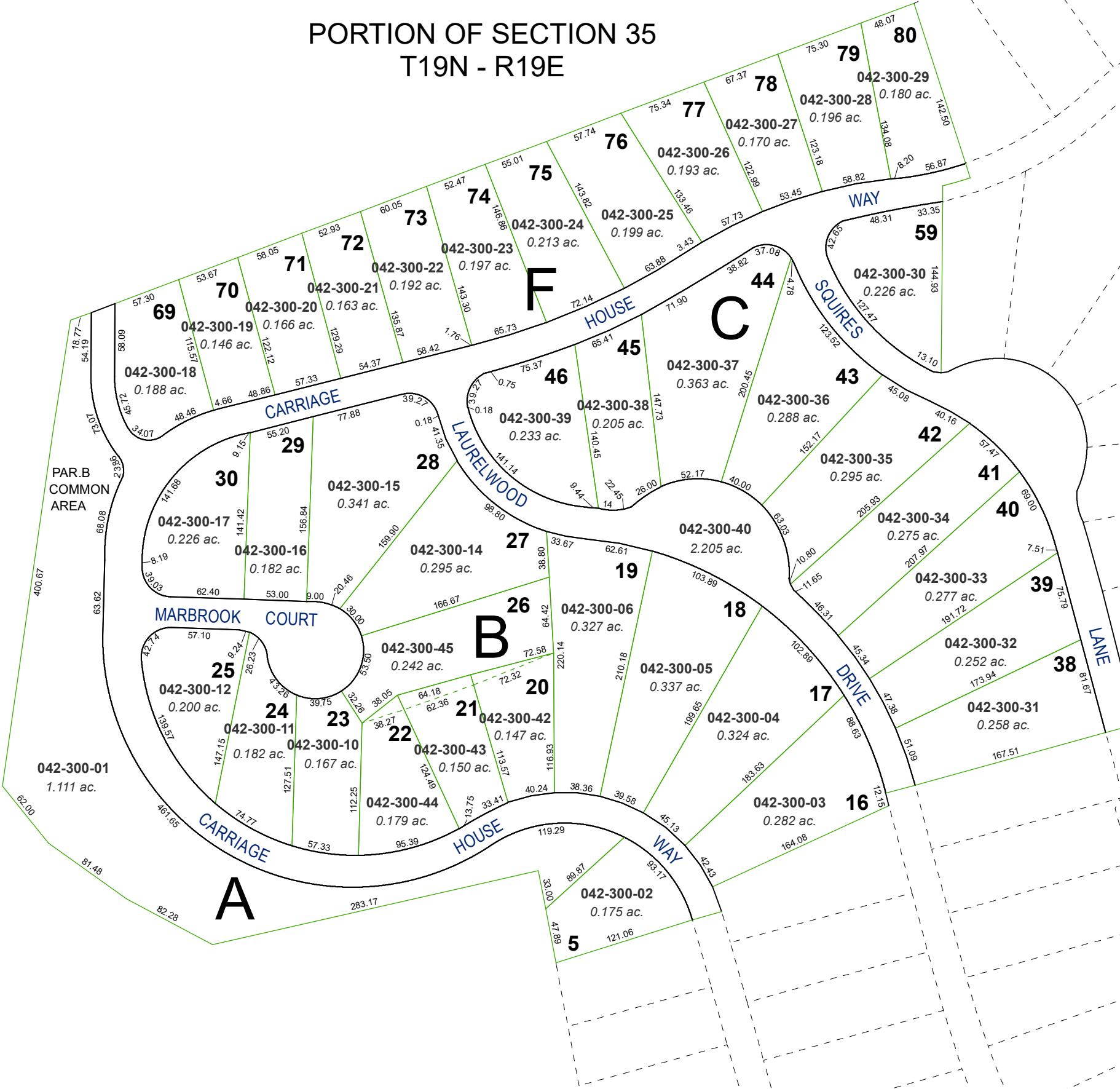


(#2452)
CARRIAGE HOUSE SUBDIVISION
A PLANNED DEVELOPMENT

PORTION OF SECTION 35
T19N - R19E

LAKERIDGE
GOLF COURSE



Assessor's Map Number

042-30

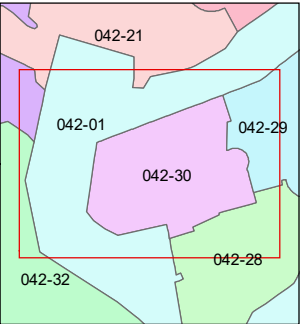
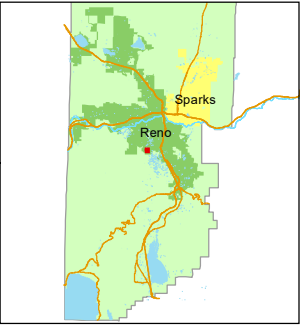
STATE OF NEVADA
WASHOE COUNTY
ASSESSOR'S OFFICE

1001 East Ninth Street, Building D
Reno, Nevada 89512
(775) 328-2231



Feet
0 25 50 75 100

1 inch = 100 feet



created by: KGC 7/09/2024

updated:

area previously shown on map(s):
42-14 & 42-24

NOTE: This map was prepared for the use of the Washoe County Assessor for assessment and illustrative purposes only. It does not represent a survey of the premises. No liability is assumed as to the sufficiency or accuracy of the data delineated hereon.