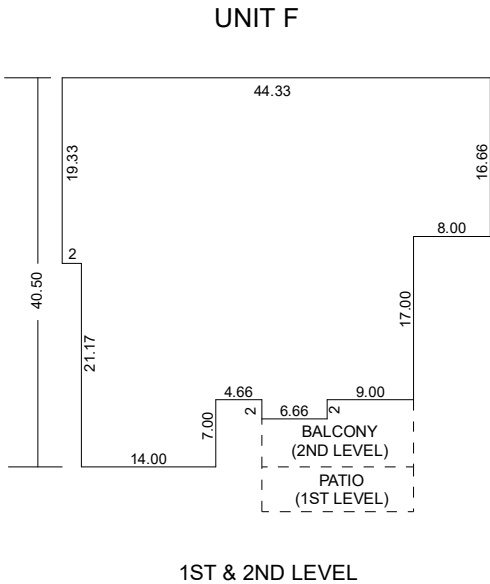
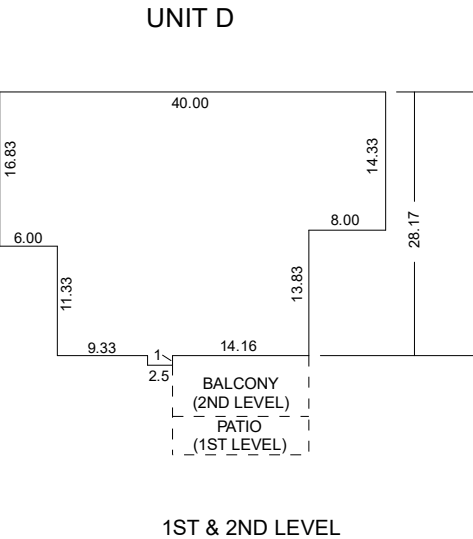
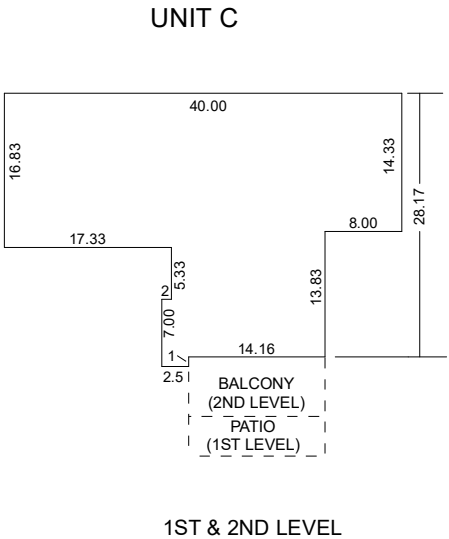
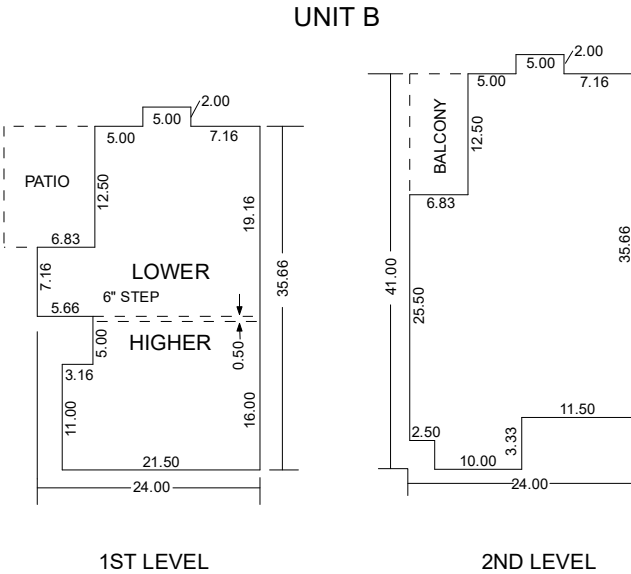
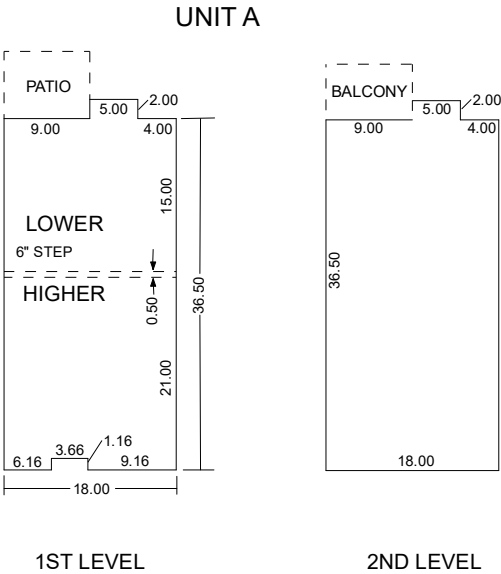


(#1986)
LAKERIDGE APARTMENTS PHASE II
A CONDOMINIUM CONVERSION

PORTION OF THE NE 1/4 SECTION 35
T19N - R19E

TYPICAL UNITS



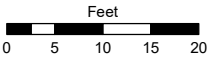
NOTE: A & B UNITS ARE 2-STORY UNITS; C, D & F UNITS ARE SINGLE-STORY UNITS

Assessor's Map Number

042-18-S5

STATE OF NEVADA
WASHOE COUNTY
ASSESSOR'S OFFICE

1001 East Ninth Street, Building D
Reno, Nevada 89512
(775) 328-2231



1 inch = 20 feet



created by: KGC 06/20/2024

updated:

area previously shown on map(s):

NOTE: This map was prepared for the use of the Washoe County Assessor for assessment and illustrative purposes only. It does not represent a survey of the premises. No liability is assumed as to the sufficiency or accuracy of the data delineated hereon.