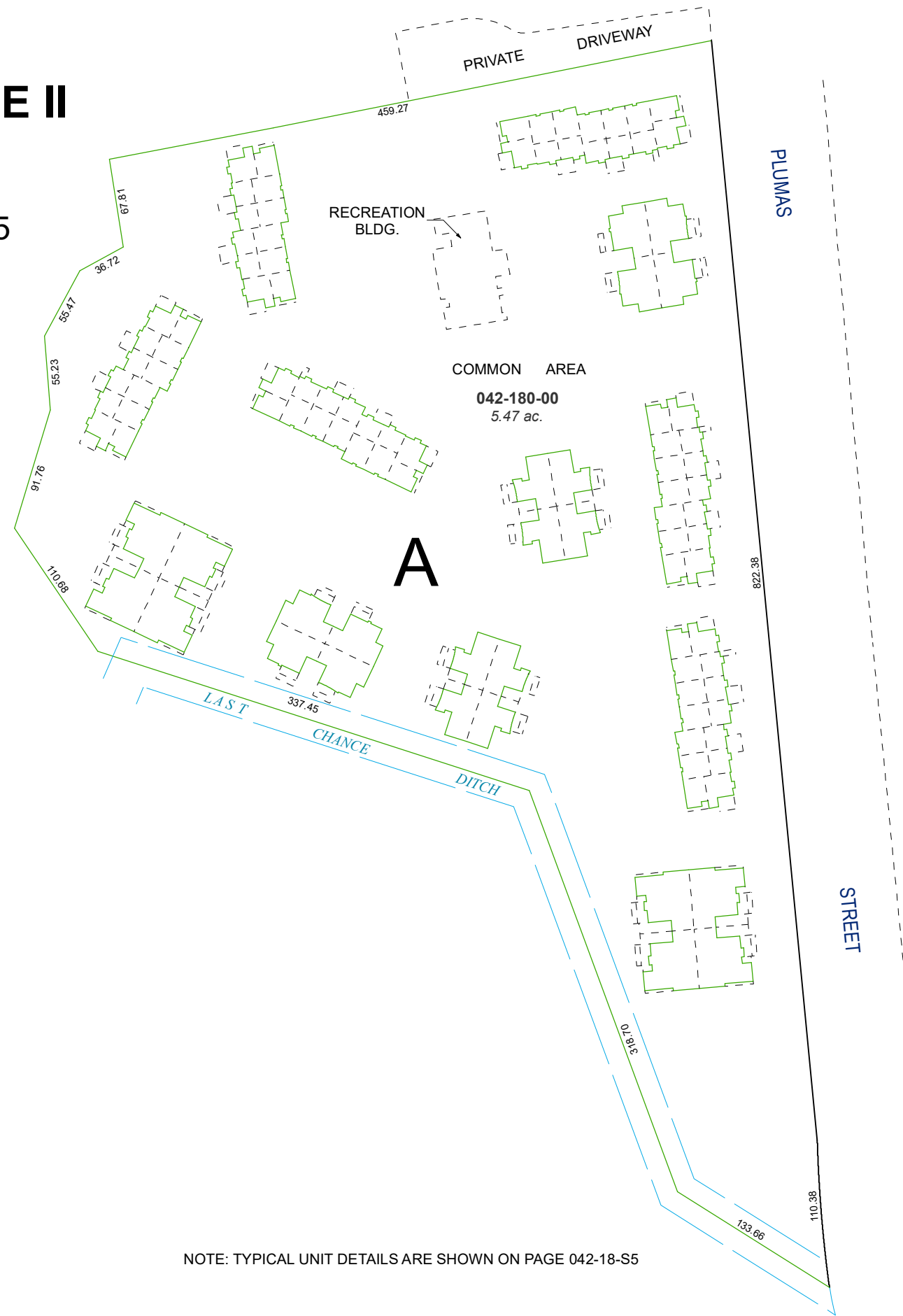


(#1986)  
**LAKERIDGE APARTMENTS PHASE II**  
A CONDOMINIUM CONVERSION  
UNDIVIDED 1/84 INTEREST  
A POR. OF N 1/2 OF THE NE 1/4 OF SEC. 35  
T19N - R19E

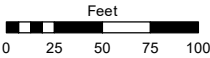


NOTE: TYPICAL UNIT DETAILS ARE SHOWN ON PAGE 042-18-S5

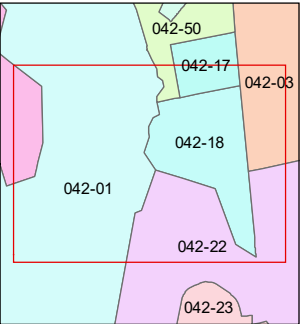
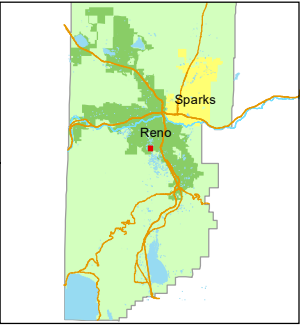
Assessor's Map Number

**042-18**

STATE OF NEVADA  
**WASHOE COUNTY**  
**ASSESSOR'S OFFICE**  
1001 East Ninth Street, Building D  
Reno, Nevada 89512  
(775) 328-2231



1 inch = 100 feet



created by: KGC 6/20/2024

updated: \_\_\_\_\_

area previously shown on map(s):  
42-02

NOTE: This map was prepared for the use of the Washoe County Assessor for assessment and illustrative purposes only. It does not represent a survey of the premises. No liability is assumed as to the sufficiency or accuracy of the data delineated hereon.