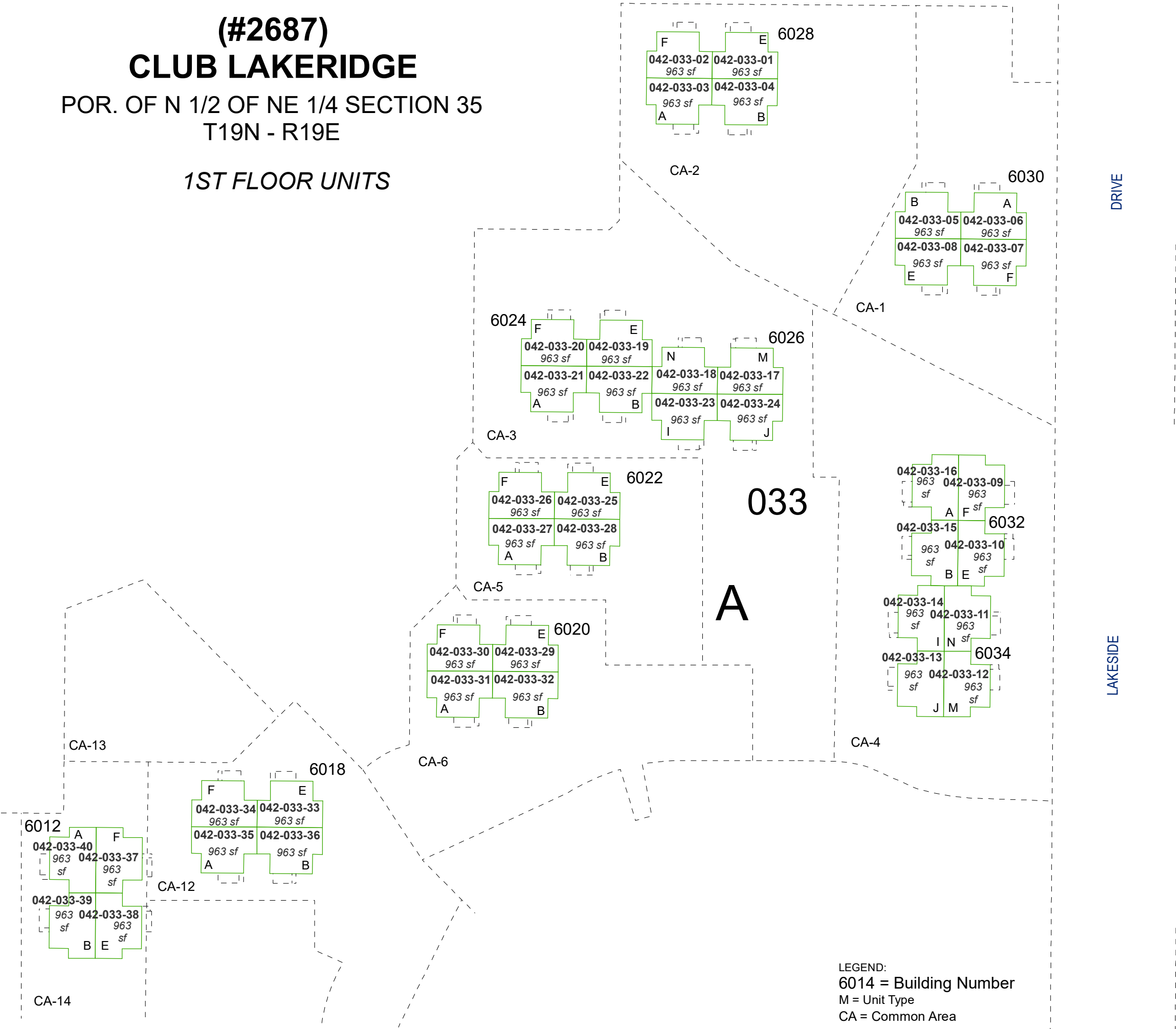


(#2687)  
**CLUB LAKERIDGE**  
POR. OF N 1/2 OF NE 1/4 SECTION 35  
T19N - R19E

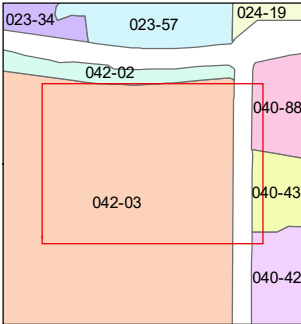
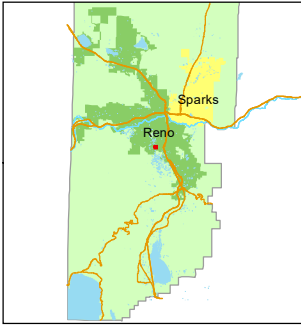
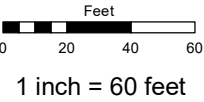
1ST FLOOR UNITS



LEGEND:  
6014 = Building Number  
M = Unit Type  
CA = Common Area

Assessor's Map Number  
**042-03-S3**

STATE OF NEVADA  
**WASHOE COUNTY**  
**ASSESSOR'S OFFICE**  
1001 East Ninth Street, Building D  
Reno, Nevada 89512  
(775) 328-2231



created by: KGC 6/6/2024

updated: \_\_\_\_\_

area previously shown on map(s):  
42-02

NOTE: This map was prepared for the use of the Washoe County Assessor for assessment and illustrative purposes only. It does not represent a survey of the premises. No liability is assumed as to the sufficiency or accuracy of the data delineated hereon.