

(#1714)
SUNRISE VILLAS AMENDED

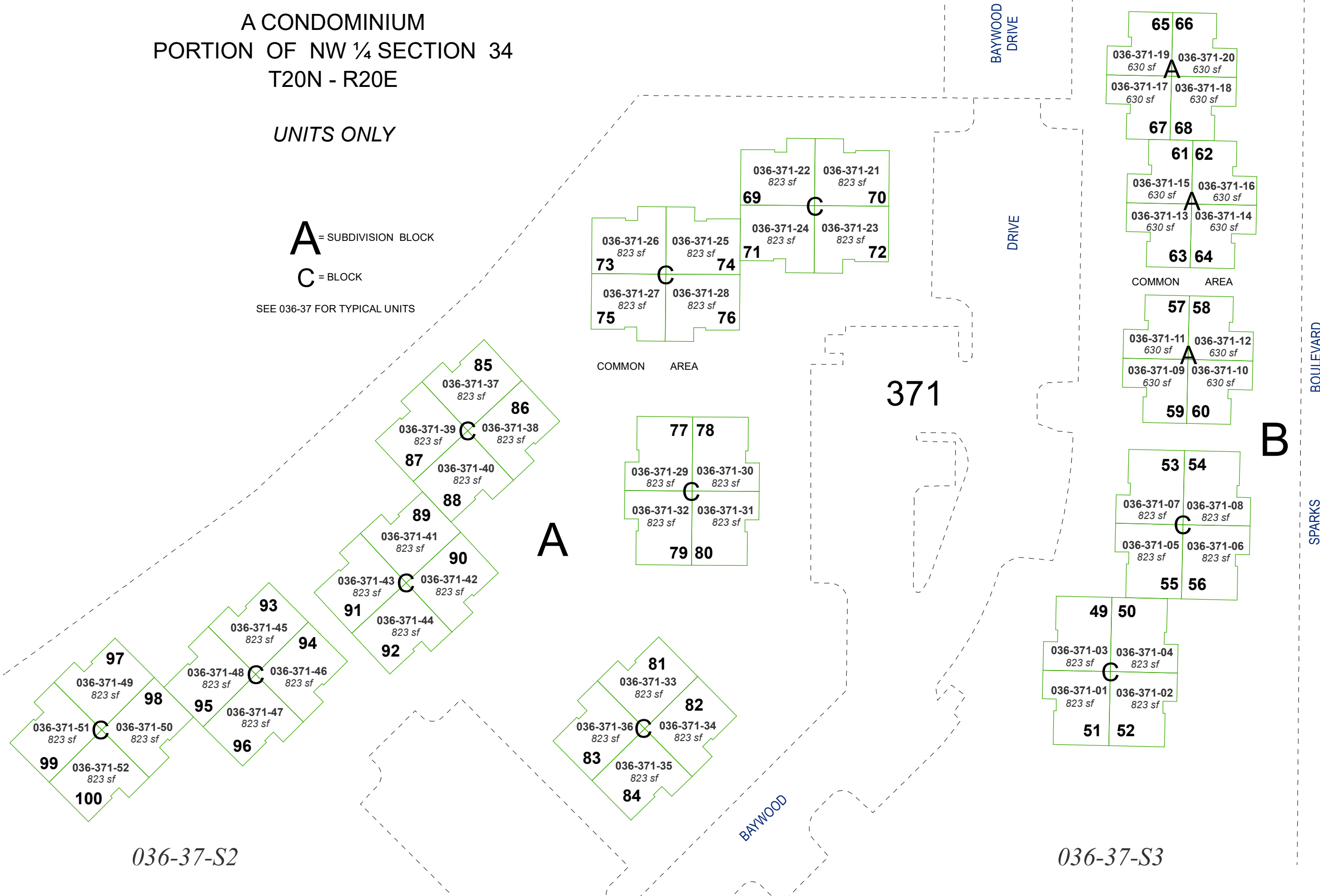
A CONDOMINIUM
PORTION OF NW ¼ SECTION 34
T20N - R20E

UNITS ONLY

A = SUBDIVISION BLOCK

C = BLOCK

SEE 036-37 FOR TYPICAL UNITS



Assessor's Map Number

036-37-S1

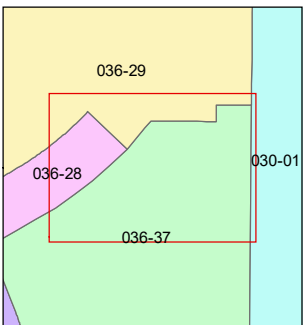
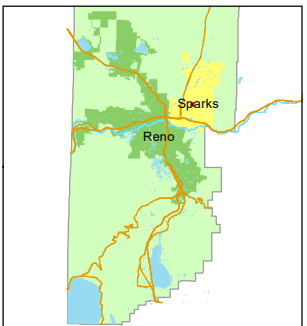
STATE OF NEVADA
WASHOE COUNTY
ASSESSOR'S OFFICE

1001 East Ninth Street, Building D
Reno, Nevada 89512
(775) 328-2231



Feet
0 10 20 30 40

1 inch = 40 feet



created by: JRA 05/05/2021

updated: _____

area previously shown on map(s):
036-03

NOTE: This map was prepared for the use of the Washoe County Assessor for assessment and illustrative purposes only. It does not represent a survey of the premises. No liability is assumed as to the sufficiency or accuracy of the data delineated hereon.