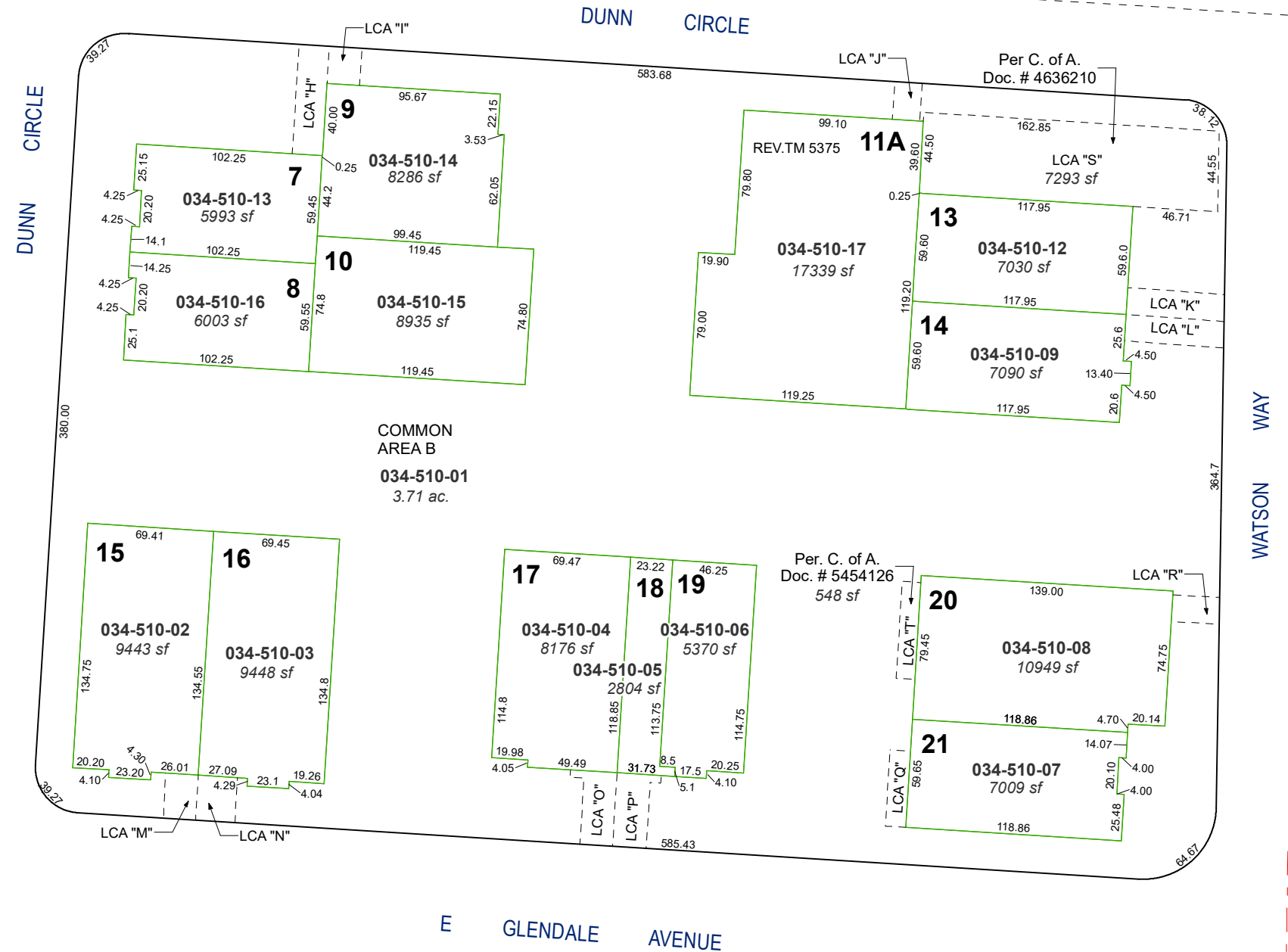


(#5014)
TURNER CROSSING BUSINESS PARK
AN INDUSTRIAL/COMMERCIAL SUBDIVISION

POR. OF THE NE ¼ OF SEC. 9
T19N - R20E



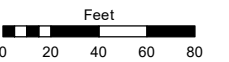
LCA = LIMITED COMMON AREA

Assessor's Map Number

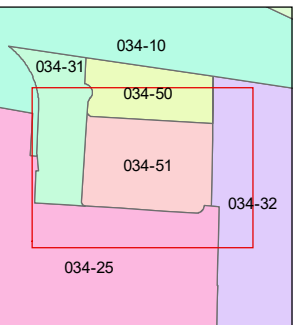
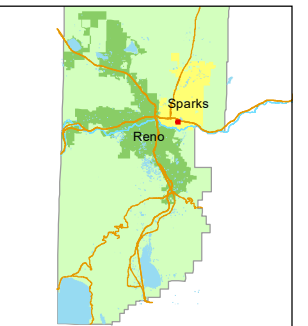
034-51

STATE OF NEVADA
WASHOE COUNTY
ASSESSOR'S OFFICE

1001 East Ninth Street, Building D
Reno, Nevada 89512
(775) 328-2231



1 inch = 80 feet



created by: NLH 6/06/2012

updated: JMO 09/30/16 SR 05/29/20

KGC 5/14/24

area previously shown on map(s):

034-31

NOTE: This map was prepared for the use of the Washoe County Assessor for assessment and illustrative purposes only. It does not represent a survey of the premises. No liability is assumed as to the sufficiency or accuracy of the data delineated hereon.