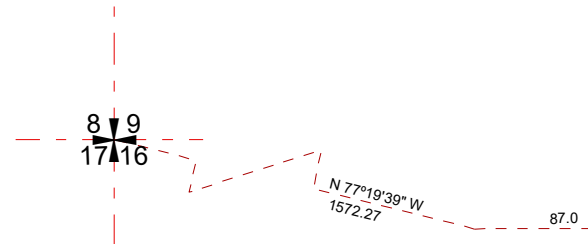
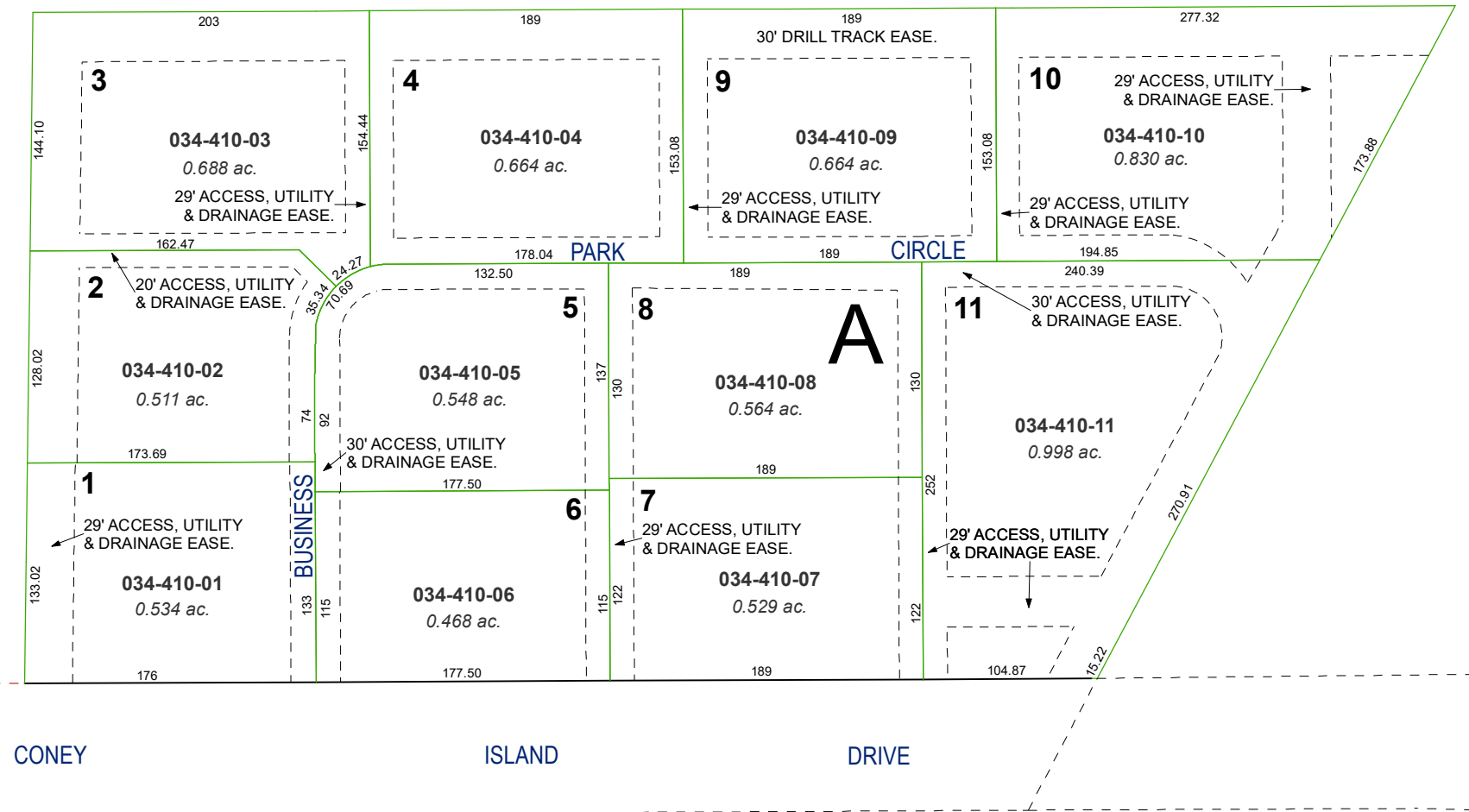


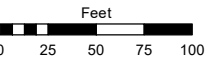
(#1936)
TRUCKEE MEADOWS BUSINESS PARK
POR. OF NW 1/4 SECTION 16
T19N - R20E



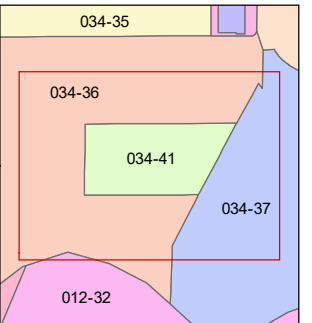
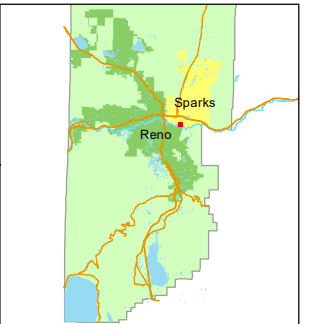
Assessor's Map Number

034-41

STATE OF NEVADA
WASHOE COUNTY
ASSESSOR'S OFFICE
1001 East Ninth Street, Building D
Reno, Nevada 89512
(775) 328-2231



1 inch = 100 feet



created by: JRA 08/01/2022

updated: _____

area previously shown on map(s):

034-36

NOTE: This map was prepared for the use of the Washoe County Assessor for assessment and illustrative purposes only. It does not represent a survey of the premises. No liability is assumed as to the sufficiency or accuracy of the data delineated hereon.