

(#85)
O'SULLIVAN TRACT - AMENDED

A POR. OF THE SW ¼ OF SEC. 4,
T19N - R20E

Assessor's Map Number

033-24

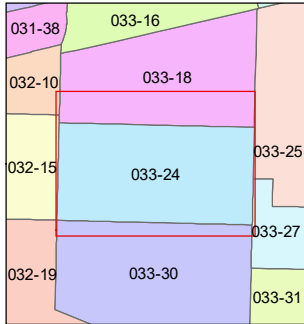
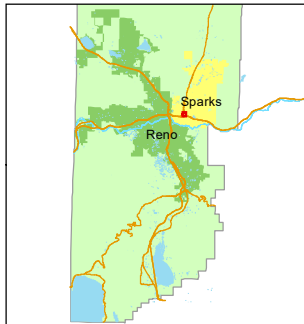
STATE OF NEVADA
WASHOE COUNTY
ASSESSOR'S OFFICE

1001 East Ninth Street, Building D
Reno, Nevada 89512
(775) 328-2231



Feet
0 25 50 75 100

1 inch = 100 feet



created by: NLH 05/25/2010

updated: NLH 7/9/12 SR 6/6/18

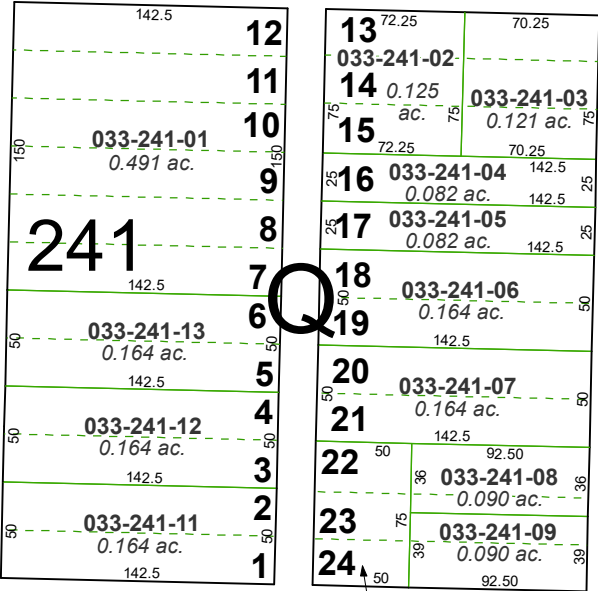
KGC 10/17/24

area previously shown on map(s):

NOTE: This map was prepared for the use of the Washoe County Assessor for assessment and illustrative purposes only. It does not represent a survey of the premises. No liability is assumed as to the sufficiency or accuracy of the data delineated hereon.

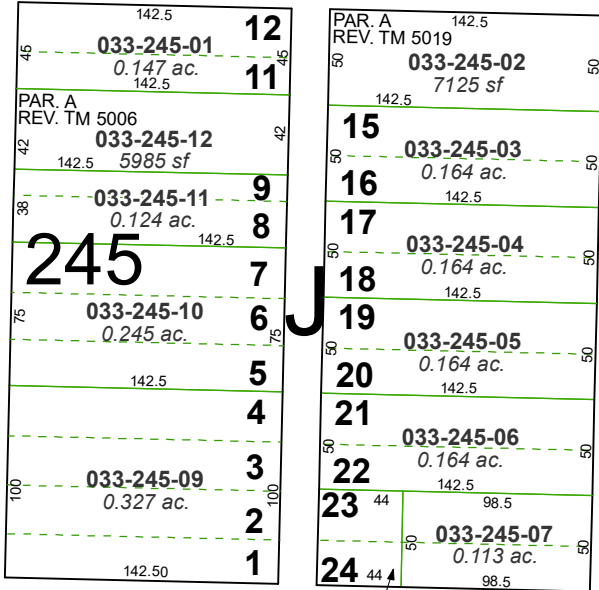
WAY

"F"



033-241-10
0.086 ac.

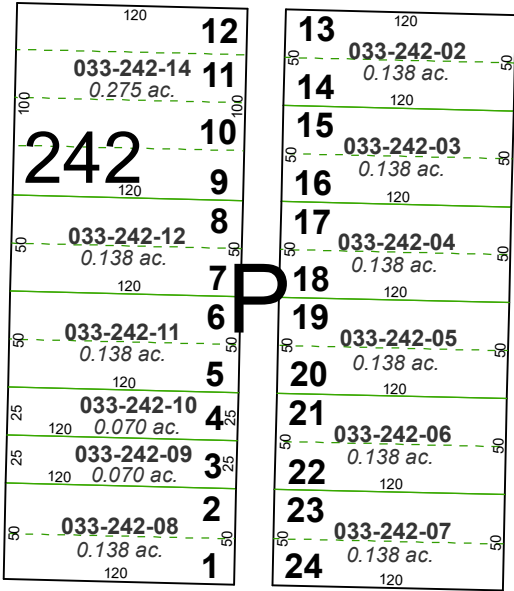
"E"



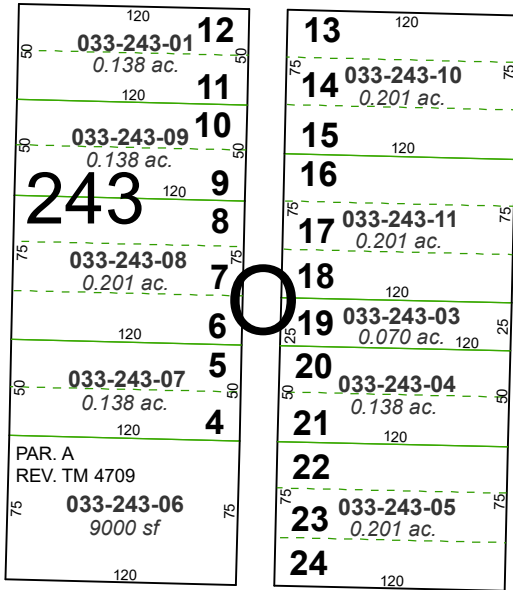
033-245-08
0.081 ac.

"D"

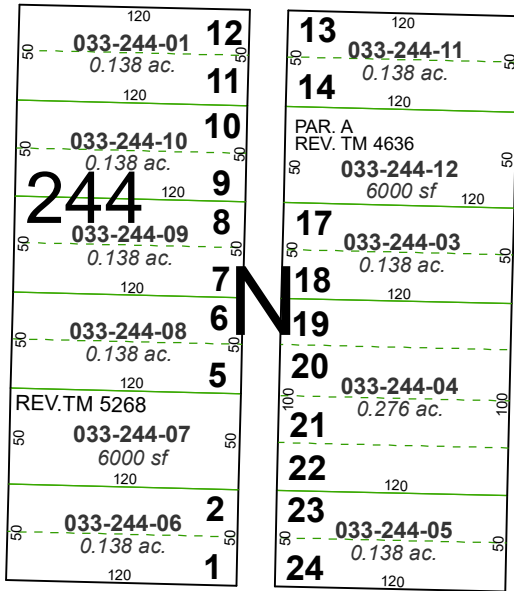
STREET



STREET



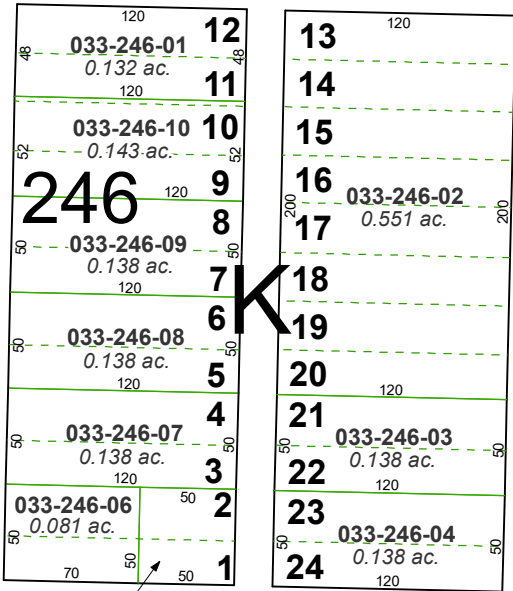
STREET



STREET

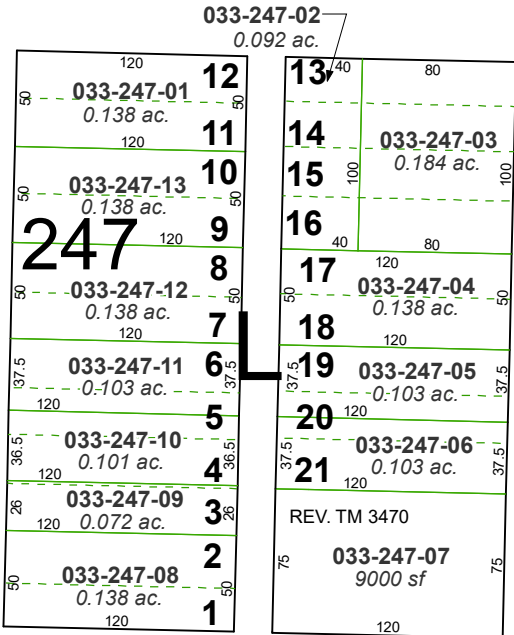
PYRAMID

7th

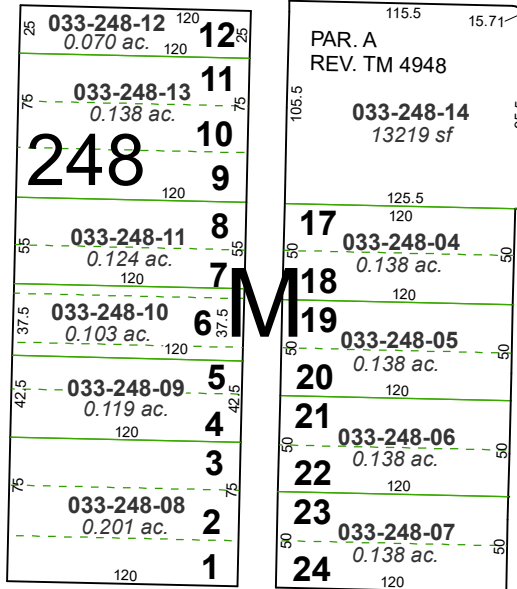


033-246-05
0.057 ac.

6th



5th



4th

STREET

STREET

STREET